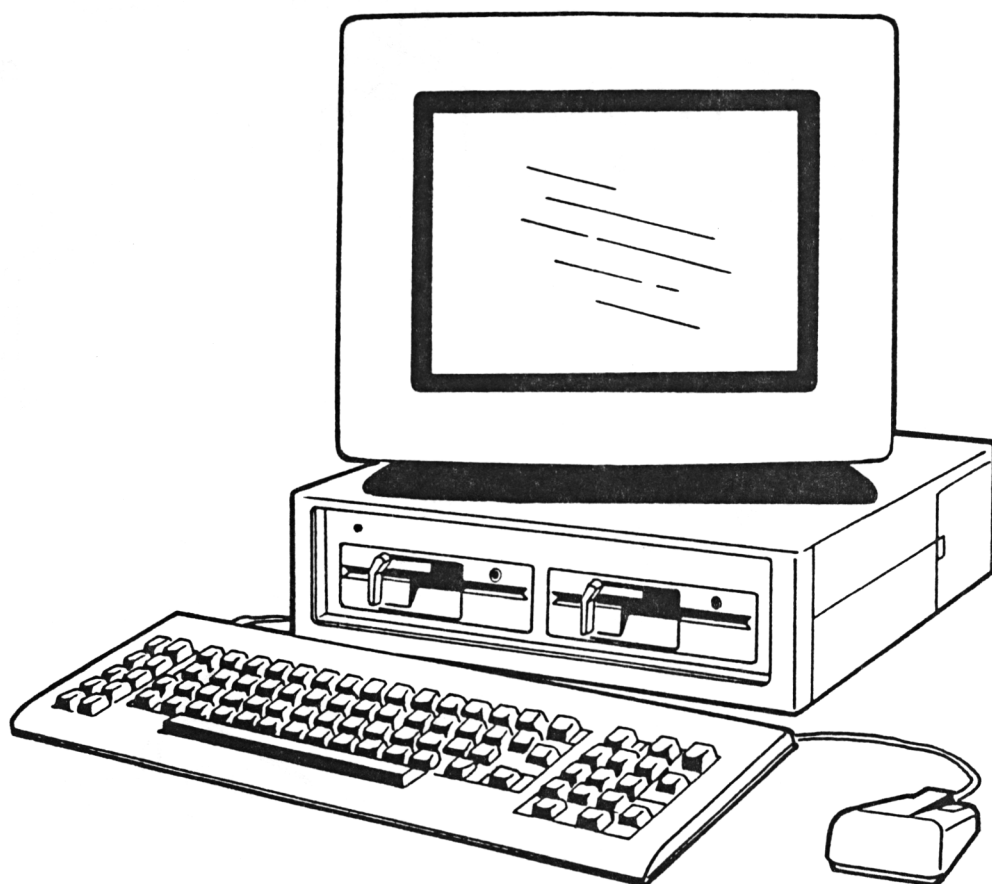
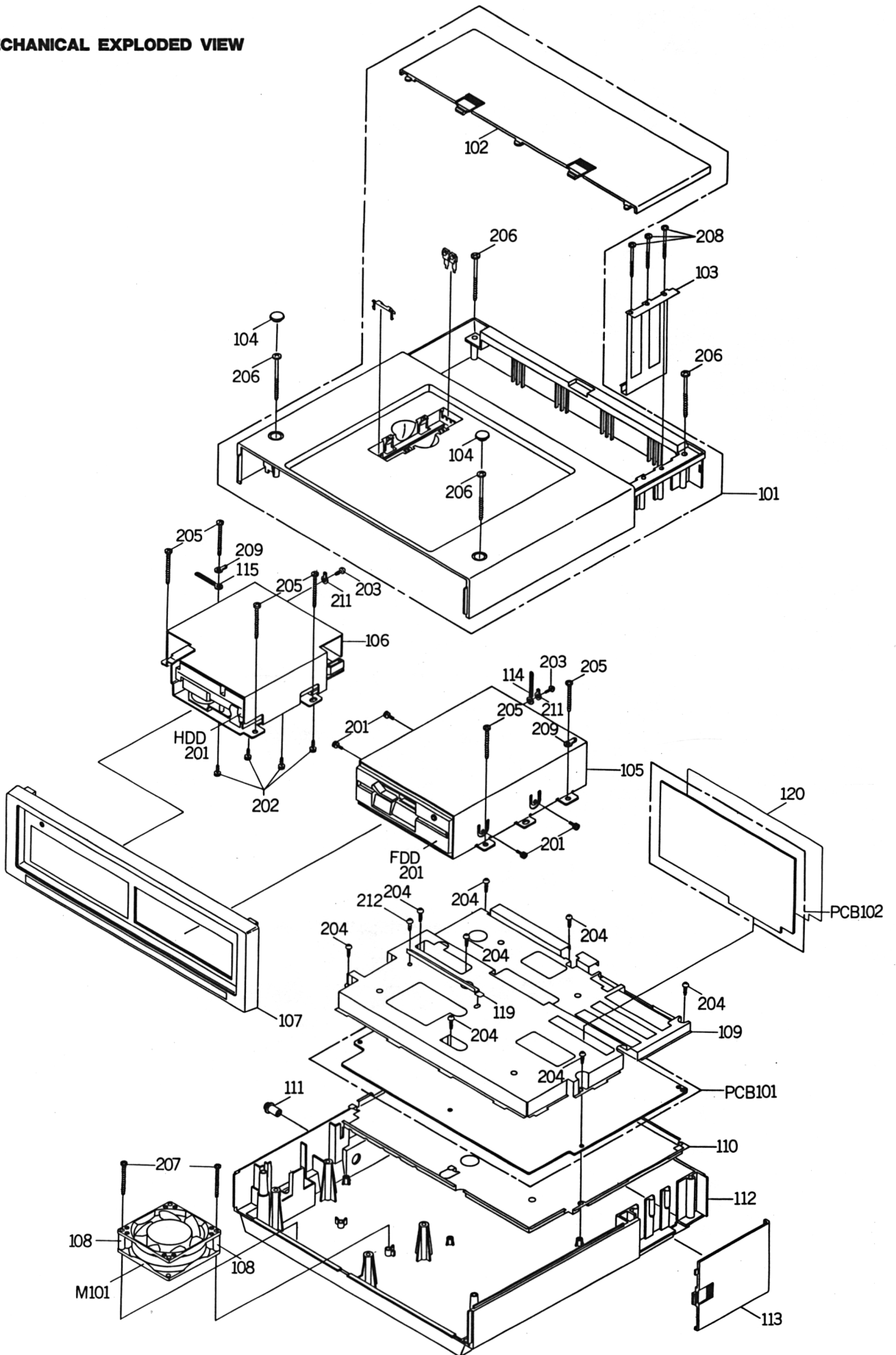


PERSONAL COMPUTER
PC 1640

Ident-Nr.: PC 1640 SD : 36252
Ident-Nr.: PC 1640 DD : 36253
Ident-Nr.: PC 1640 HD : 36254



MECHANICAL EXPLODED VIEW



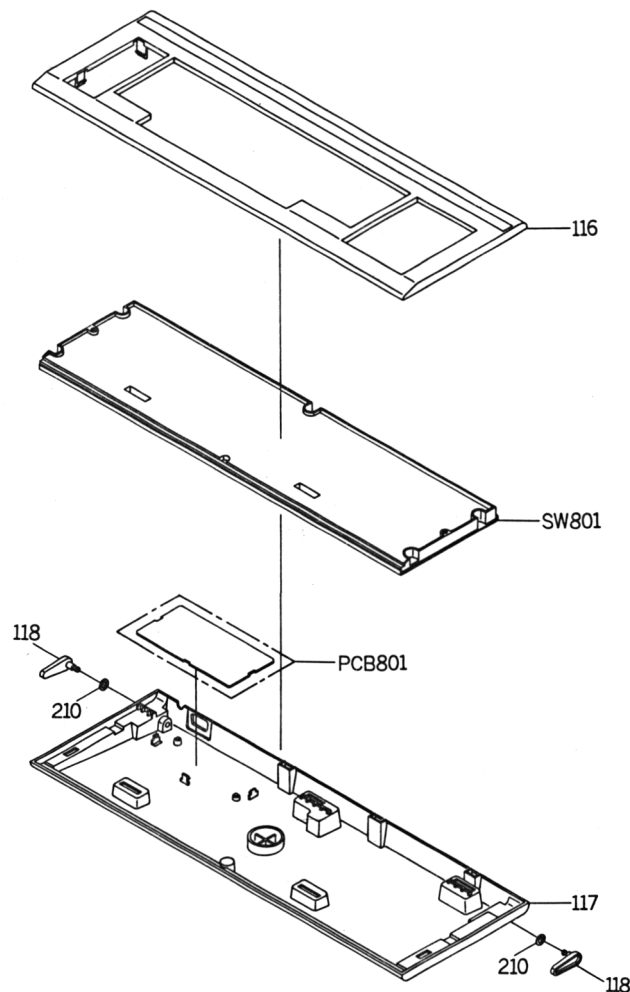
Ersatzteilliste für PC1640 Computer
Parts List for Model PC1640 Computer

Best.-Nr. Part-No.	Bezeichnung	Description	Zeichn.-Pos. Ref.-No.	Preisgruppe
3471600	Gehäuse Oberteil	Cabinet, Top Ass'y	101	C9
3471100	Abdeckung Slot	Lid, PCB	102	B2
3471400	Winkel	Plate, Earth CPU	103	A5
3471500	Abdeckung	Screw Cap	104	A2
3473000	Knopf, Dreh	Knob, Volume	111	A1
4006500	Gehäuse Boden	Cabinet, Bottom	112	C6
3473800	Abdeckung, Schnittstelle	Lid, Jack	113	A6
2745400	Maus PC 1512	Mouse		E0
3475300	Folienbeutel	Poly Bag, Set		A3
3475700	Styropor links	Package, Left		B5
3475800	Styropor rechts	Package, Right		B5
PC1640 SD				
4006400	Frontrahmen SD/DD	Panel, Front Ass'y	107	B8
4006800	Typenschild	Sheet, Rating		A2
4006600	Schild Name SD	Plate Brand SD	121	A7
4006700	Faltkarton SD	Gift Box		C0
PC1640 DD				
4006400	Frontrahmen SD/DD	Panel, Front Ass'y	107	B8
4006900	Typenschild	Sheet, Rating		A2
4007000	Schild Name DD	Plate Brand DD	121	A7
4007100	Faltkarton DD	Gift Box		C0
PC1640 HD				
4020400	Frontrahmen HD	Panel, Front Ass'y	107	B8
4007200	Typenschild	Sheet, Rating		A2
4007300	Schild Name HD	Plate Brand HD	121	A7
3764100	Lüfter	Fan, Spacer	108	E6
4007400	Faltkarton HD	Gift Box		C0
4007500	Styropor links	Package, Left		B3
4007600	Styropor rechts	Package, Right		B3

Ersatzteilliste für PC1640 Tastatur
 Parts List for Model PC1640 Keyboard

Best.-Nr. Part-No.	Bezeichnung	Description	Zeichn.-Pos. Ref.-No.	Preisgruppe
3473900	Gehäuse Oberteil	Cabinet, Top	116	B4
4007700	Schild Name	Plate, Brand		A9
3474100	Gehäuse Boden	Cabinet, Bottom	117	B6
3474200	Gummifuß	Leg Rubber		A1
4007800	Typenschild	Sheet, Rating		A2
3474400	Kunststofffüße	Stand, Keyboard	118	A2
3475100	Scheibe	Washer	210	A0
3475400	Folienbeutel	Poly Bag		A1
PC 1640 SD/DD				
3475500	Styropor links	Package, Left		A7
3475600	Styropor rechts	Package, Right		A7
PC 1640 HD				
4007900	Styropor links	Package, Left		A7
4008000	Styropor rechts	Package, Right		A7

Mechanical Exploded View Keyboard



Ersatzteilliste für PC1640
Parts List for Model PC1640

Best.-Nr. Part-No.	Bezeichnung	Description	Zeichn.-Pos. Ref.-No.	Preisgruppe	
IC					
2134100	IC	HCF4093	IC (Mouse)	IC1	B7
3476200	IC	MC1488P	IC	IC101	B1
3476300	IC	MC1489AP	IC	IC102	B0
3476300	IC	MC1489AP	IC	IC103	B0
1524100	IC	HD7406P	IC	IC104	A7
2635300	IC	DN74LS373	IC	IC105	B8
3476400	IC	INS8250N	IC	IC106	D9
3476500	IC	DN74LS240P	IC	IC107	A9
2635400	IC	DN74LS244	IC	IC108	B9
3476600	IC	MBL8259A-2P	IC	IC109	B6
3476700	IC	DN74LS125P	IC	IC110	A7
4008100	IC	FDC91C36	IC	IC111	B8
2922000	IC	Z765PS	IC	IC112	C9
3476800	IC	DN74LS174P	IC	IC113	A7
3476900	IC	UPD8253C-5	IC	IC114	B6
2635400	IC	DN74LS244	IC	IC115	B9
3216700	IC	DN74LS14P	IC	IC116	A6
2922200	IC	TC74HC240P	IC	IC117	C3
3477000	IC	HSG5140-40040	IC	IC118	F4
3477100	IC	MBL8086-2P	IC	IC120	C9
2635400	IC	DN74LS244	IC	IC121	B9
2635300	IC	DN74LS373	IC	IC122	B8
3477200	IC	DN74LS245P	IC	IC123	B0
2635400	IC	DN74LS244	IC	IC124	B9
3477300	IC	HSG5140-40039	IC	IC125	F4
3477400	IC	HSG5420-40041	IC	IC126	F4
2981600	IC	TC74HCU04P	IC	IC128	B0
4008200	IC	ROM40043	IC	IC129	C0
3477700	IC	UPD8237AC-5	IC	IC130	C9
4008300	IC	ROM40044	IC	IC132	B0
3478100	IC	MC146818P	IC	IC134	C4
3478200	IC	MN41256-15	IC	IC135-IC152	C6
4008400	IC	TMS4464-12	IC	IC153	C9
4008400	IC	TMS4464-12	IC	IC154	C9
4008500	IC	MT4264-15	IC	IC155	C7
4008400	IC	TMS4464-12	IC	IC156	C9
4008400	IC	TMS4464-12	IC	IC157	C9
4008500	IC	MT4264-15	IC	IC158	C7
4008600	IC	PAL16L8A/40096	IC	IC171	D6
2635800	IC	LA4140	IC	IC401	B1
3478300	IC	UPD8048HC PC	IC	IC801	C1
3201300	IC	TC74HC14P	IC	IC802	B1
4008400	IC	TMS4464-12	IC	IC901-IC908	C9
2635400	IC	DN74LS244	IC	IC909	B9
4008700	IC	PEGA1A	IC	IC910	F4
4008800	IC	DN74LS367	IC	IC911	A9
4008900	IC	PAL16L8A/40097	IC	IC912	D6
4009000	IC	ROMEGA40100	IC	IC913	C5
2635400	IC	DN74LS244	IC	IC914	B9
2635400	IC	DN74LS244	IC	IC915	B9
2612100	IC	DN74LS00	IC	IC916	A5
4009100	IC	PAL16L8A/40098	IC	IC918	D6
2634700	IC	DN74LS153	IC	IC919	B2
3476800	IC	DN74LS174	IC	IC921	A7
3477200	IC	DN74LS245	IC	IC922	B0

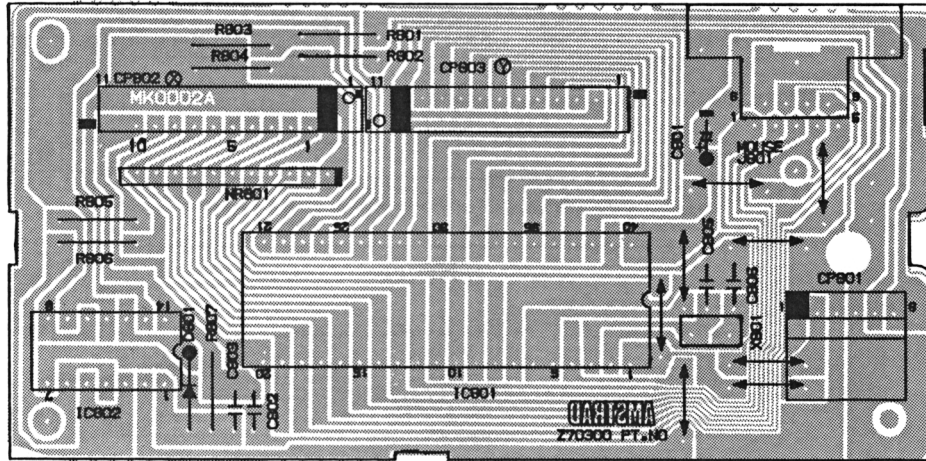
Ersatzteilliste für PC1640
Parts List for Model PC1640

Best.-Nr. Part-No.	Bezeichnung		Description	Zeichn.-Pos. Ref.-No.	Preisgruppe
Transistoren/Transistors					
2613400	Transistor	2SC1815 Y	TRANSISTOR, SILICON	Q101	A2
2613400	Transistor	2SC1815 Y	TRANSISTOR, SILICON	Q102	A2
1295900	Transistor	2SA1015 Y-Type 1	TRANSISTOR, SILICON	Q103	A6
1295900	Transistor	2SA1015 Y-Type 1	TRANSISTOR, SILICON	Q104	A6
2613400	Transistor	2SC1815 Y	TRANSISTOR, SILICON	Q105	A2
1295900	Transistor	2SA1015 Y-Type 1	TRANSISTOR, SILICON	Q106	A6
Dioden/Diodes					
3493000	Diode	1SS132T-77	DIODE, SILICON	D101-D105	A0
1481300	Z-Diode	MTZ4.7 AT-77	DIODE, SILICON	D106	A5
1481300	Z-Diode	MTZ4.7 AT-77	DIODE, SILICON	D107	A5
2295600	Z-Diode	GZA4.7 Y	DIODE, SILICON	D108	A3
2295600	Z-Diode	GZA4.7 Y	DIODE, SILICON	D109	A3
3493000	Diode	1SS132T-77	DIODE, SILICON	D501	A0
3493000	Diode	1SS132T-77	DIODE, SILICON	D502	A0
1209800	LED	TLS134A	LED	D503	A4
2655500	Diode	DS442X-BT	DIODE, SILICON	D801	A1
Widerstände/Resistors					
3478400	Sich.-Widerstand	5.6 1/2W	R, FUSE	R181	A3
3206300	Widerstand/Netzwerk	RGLN7X472J	R, NETWORK	NR101	A4
3478500	Widerstand/Netzwerk	RGLN5X102J	R, NETWORK	NR102	A2
3478700	Widerstand/Netzwerk	RGLN5X222J	R, NETWORK	NR104	A2
3206400	Widerstand/Netzwerk	RGLN8X472J	R, NETWORK	NR105	A4
3478800	Widerstand/Netzwerk	RGLN10X103J	R, NETWORK	NR801	A3
3206300	Widerstand/Netzwerk	RGLN7X4723	R, NETWORK	NR901	A4
3206300	Widerstand/Netzwerk	RGLN7X4723	R, NETWORK	NR902	A4
3478900	Poti	EVU-E2AF15B24	VOLUME	VR401	A7

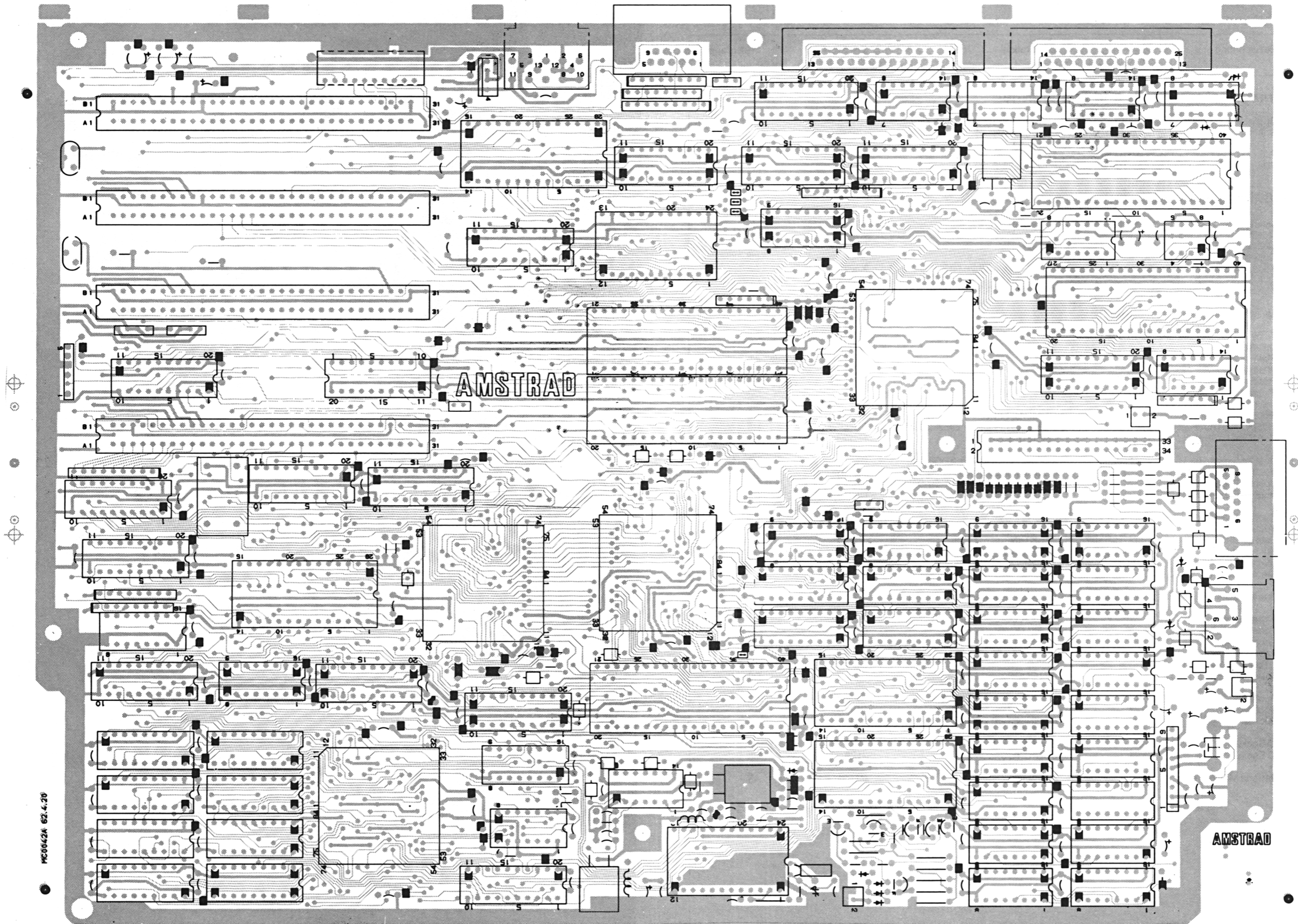
Ersatzteilliste für PC1640
Parts List for Model PC1640

Best.-Nr. Part-No.	Bezeichnung		Description	Zeichn.-Pos. Ref.-No.	Preisgruppe
Spulen und Transformatoren/Coils and Transformer					
3202300	Spule	LAL03KH2R2M	COIL INDUCTOR	L101	A3
3202300	Spule	LAL03KH2R2M	COIL INDUCTOR	L102	A3
3479000	Filter	DSS310-54B271M	FILTER EMI	PF101	A4
3479000	Filter	DSS310-54B271M	FILTER EMI	PF102	A4
Verschiedenes/Miscellaneous					
3479100	Quarz	HC49U.843M	CRYSTAL	X101	B4
3479200	Quarz	DSVT30032K	CRYSTAL	X103	A7
3479300	Quarz	HC18RW24.0	CRYSTAL	X104	B2
3479400	Quarz	HC18RW28.636	CRYSTAL	X105	B2
3479500	Keramikoszillator	KBR-6.0M	CERAMIC OSCILLATOR	X801	A6
4009200	Quarz	KXO16.257	CRYSTAL	X901	C3
3479600	Keramiktrimmer		TRIMMER CERAMIC	TC101	A3
3479700	Lautsprecher		SPEAKER	SP401	B3
3479800	Tastatur	ESU-2464	SWITCH, KEYBOARD	SW801	E2
3218200	DIP-Schalter	A6DR-0100	SWITCH	SW901	B6
4009300	Platine CPU	MC0042A	PCB	PCB101	J1
3479900	Platine	MC0043A	PCB	PCB102	A5
3480100	Platine Tastatur	MK002A	PCB	PCB801	E6
3763800	Platine Controller	(nur bei HD-Version)	PCB		G3
3480200	Floppy Disc Laufwerk 5¼"		COMPACT FLOPPY DISK DRIVE	FDD201	H5
3480300	Floppy Disc Laufwerk 5¼"		COMPACT FLOPPY DISK DRIVE	FDD202	H5
4009400	Hard Disc Laufwerk	DRMD20	HARD DISC DRIVE	HDD201	J9
3480400	Buchse Expansion		SOCKET D-SUB 475-31-30-042	CE101	B7
3480400	Buchse Expansion		SOCKET D-SUB 475-31-30-042	CE102	B7
3480400	Buchse Expansion		SOCKET D-SUB 475-31-30-042	CE103	B7
3480400	Buchse Expansion		SOCKET D-SUB 475-31-30-042	CE104	B7
3480500	Buchse SUB-D	25pol. Drucker	SOCKET D-SUB	JD102	C0
3480600	Buchse SUB-D	9pol. Maus	SOCKET D-SUB	JD104	B7
2636400	Buchse DIN	6pol. Tastatur	JACK DIN	JD105	A9
3480800	Buchse DIN	14pol. Power	JACK DIN	JD501	B1
3480600	Buchse SUB-D	pol. VDU	SOCKET D-SUB	JD901	B7
3480900	Stecker SUB-D	25pol. Seriell	SOCKET D-SUB	JP101	C0
2636500	Buchse SUB-D	9pol. Joystick	SOCKET D-SUB	J801	B1
3481000	Kabel Power		MATE N LOK	CD101	B0
3481100	Kabel Disc Drive		CORD CONNECTOR	CD102	D2
3481200	Kabel Power		MATE N LOK	CD104	A9
4009600	Kabel HD 20pol.		CORD	CD106	C5
4009500	Kabel HD 34pol.		CORD	CD107	C7
3481300	Kabel Tastatur		DIN CORD	CD801	B9
3481400	Buchse	6pol.	CONNECTOR PCB SIDE	CP801	A3
3481500	Buchse	11pol.	CONNECTOR PCB SIDE	CP802	A5
3481500	Buchse	11pol.	CONNECTOR PCB SIDE	CP803	A5
2305200	IC Sockel	28pol.	SOCKET, IC	J102	A2
2383400	IC Sockel	40pol.	SOCKET, IC	J122	B8
3152900	Batterie Mignon, 1,5 V		BATTERY	BT101	A6

KEY BOARD P.C.BOARD



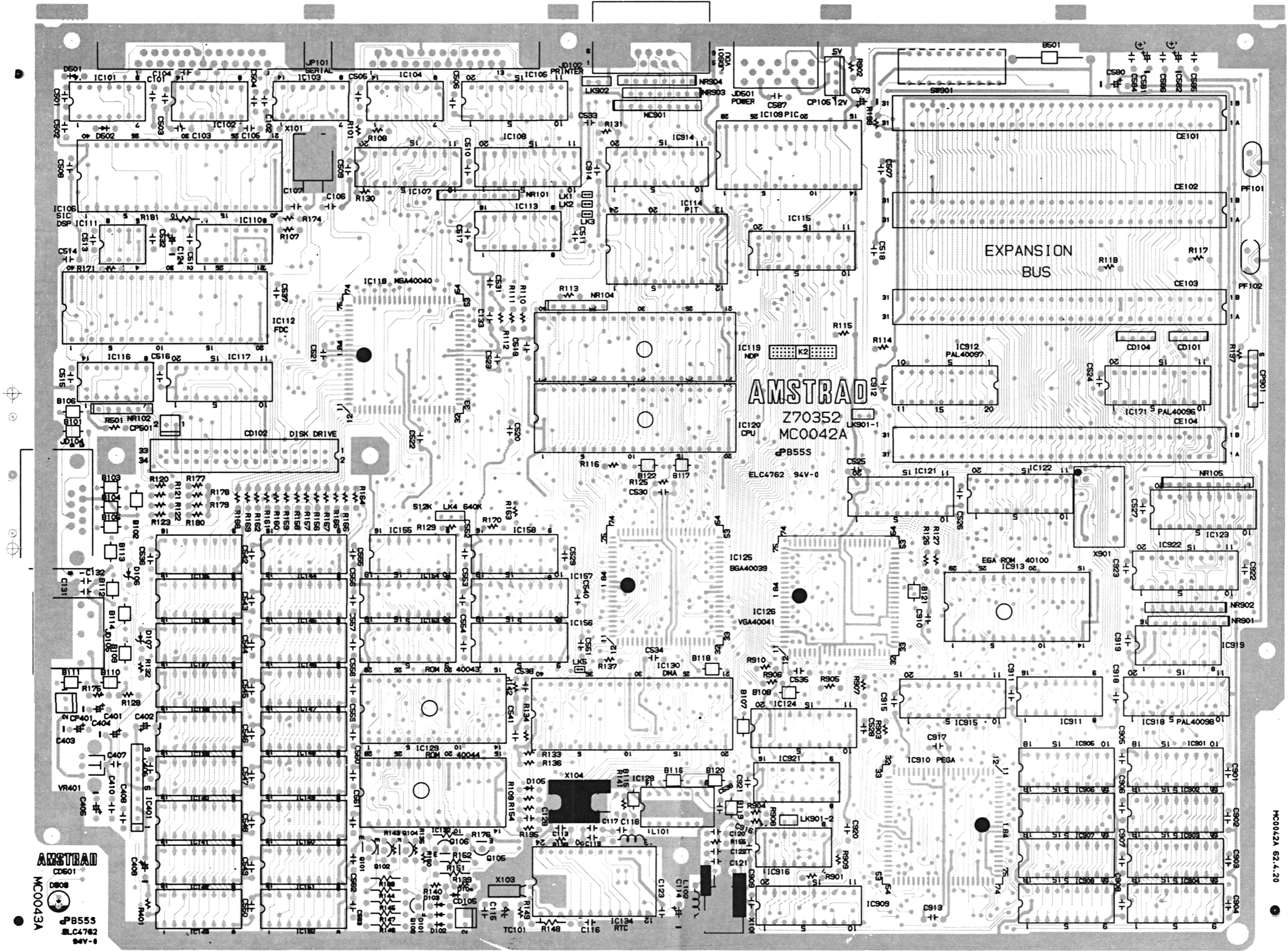
C P U P.C.BOARD



MC0042A 62.4.20

AMSTRAD

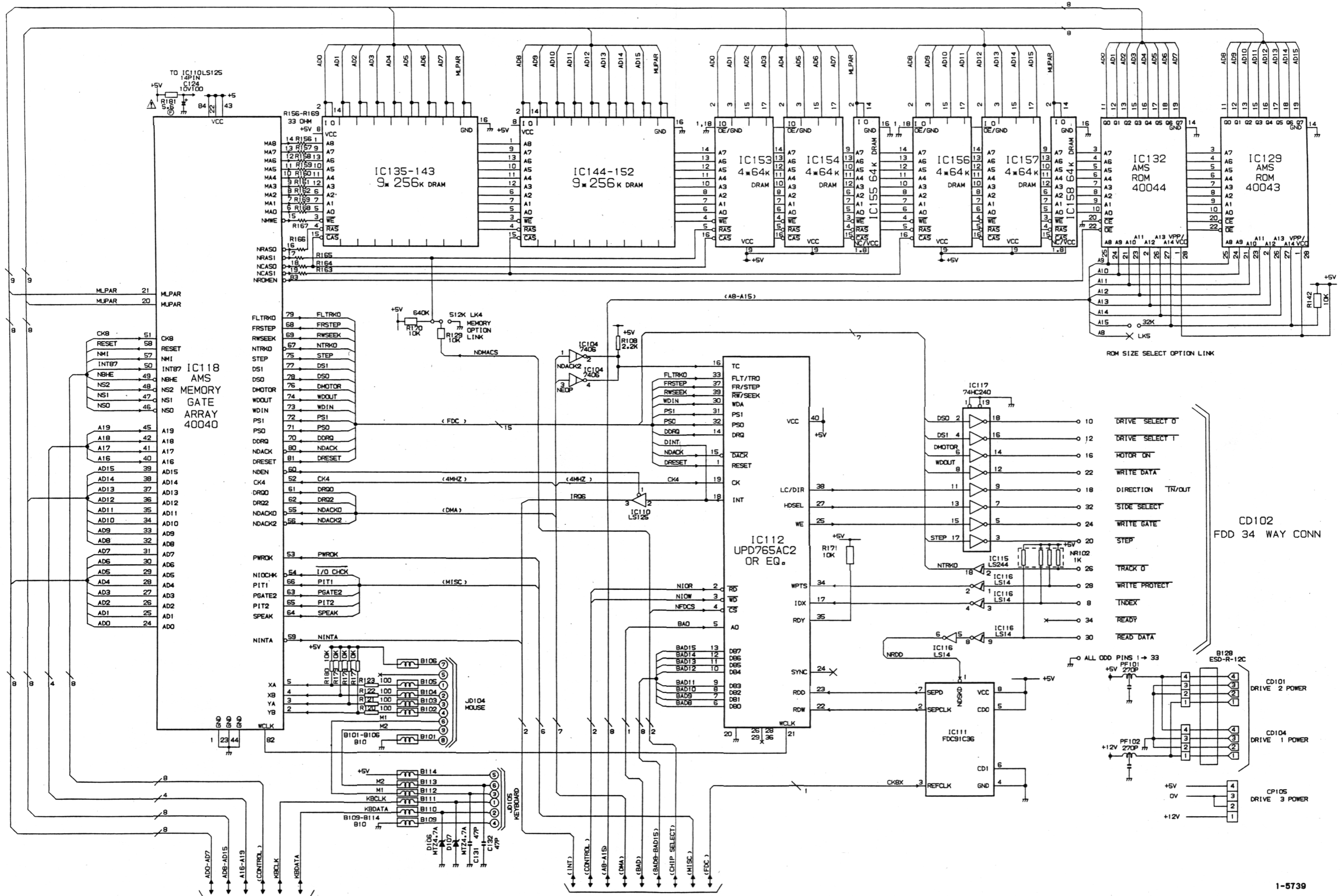
C P U P.C.BOARD



AMSTRAD
CP501
DB08
MC0042A
B555
ELC4762
94V-0

MC0042A 62.4.20

CHASSIS SCHEMATIC DIAGRAM

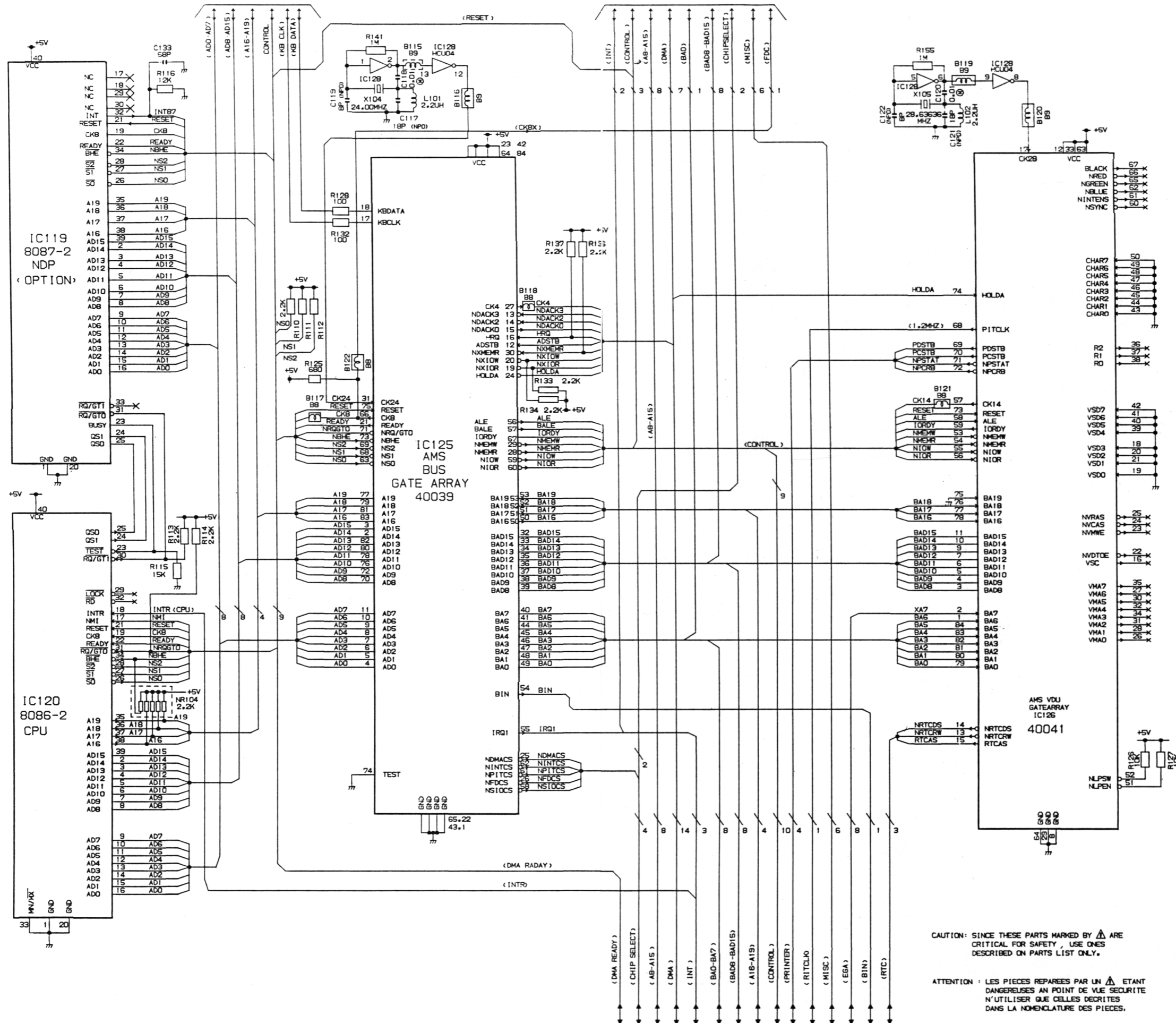


ATTENTION : LES PIÈCES REPARÉES PAR UN Δ ÉTANT DANGEREUSES AN POINT DE VUE SÉCURITÉ N'UTILISER QUE CELLES DÉCRITES DANS LA NOMENCLATURE DES PIÈCES.

CAUTION: SINCE THESE PARTS MARKED BY Δ ARE CRITICAL FOR SAFETY, USE ONES DESCRIBED ON PARTS LIST ONLY.

NOTE: THIS SCHEMATIC DIAGRAM IS THE LATEST AT THE TIME OF PRINTING AND SUBJECT TO CHANGE WITHOUT NOTICE.

CHASSIS SCHEMATIC DIAGRAM

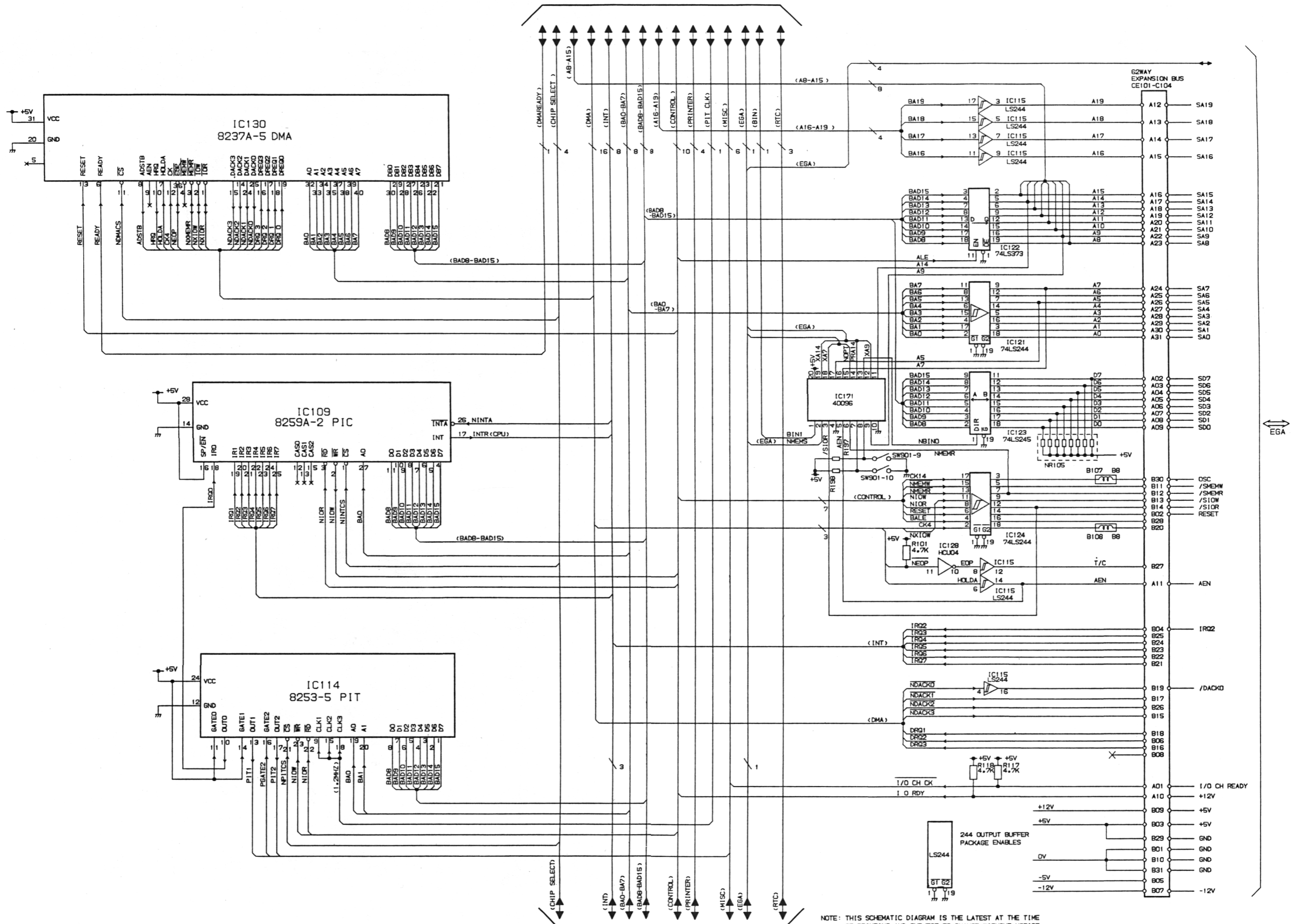


CAUTION: SINCE THESE PARTS MARKED BY Δ ARE CRITICAL FOR SAFETY, USE ONES DESCRIBED ON PARTS LIST ONLY.

ATTENTION: LES PIECES REPAREES PAR UN Δ ETANT DANGEREUSES AN POINT DE VUE SECURITE N'UTILISER QUE CELLES DECRITES DANS LA NOMENCLATURE DES PIECES.

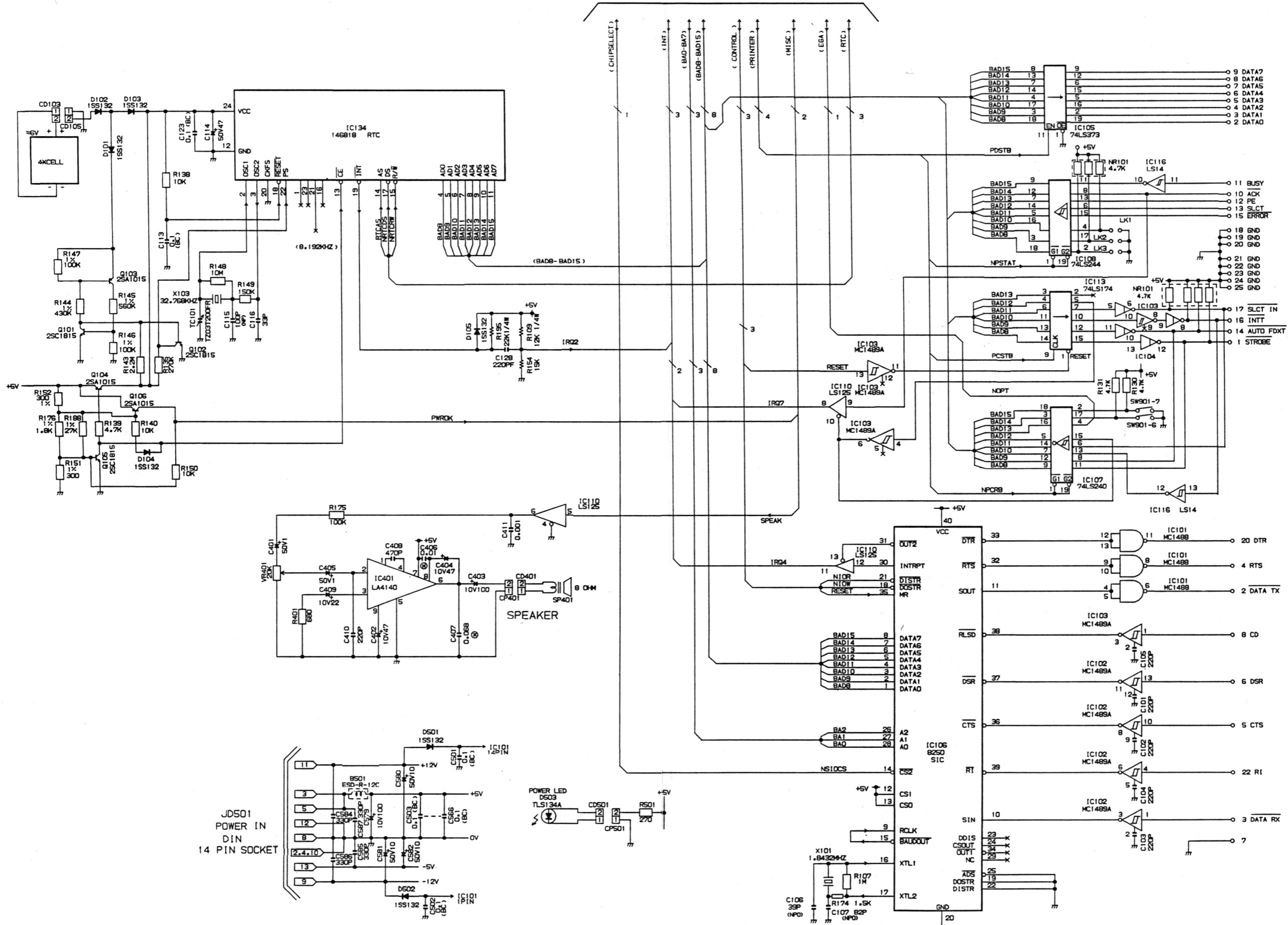
NOTE: THIS SCHEMATIC DIAGRAM IS THE LATEST AT THE TIME OF PRINTING AND SUBJECT TO CHANGE WITHOUT NOTICE.

CHASSIS SCHEMATIC DIAGRAM



NOTE: THIS SCHEMATIC DIAGRAM IS THE LATEST AT THE TIME OF PRINTING AND SUBJECT TO CHANGE WITHOUT NOTICE.

CHASSIS SCHEMATIC DIAGRAM



JD102
 PRINTER
 25 WAY
 D-SUB CONN.

JP101
 SERIAL PORT
 25 WAY
 D-SUB CONN.

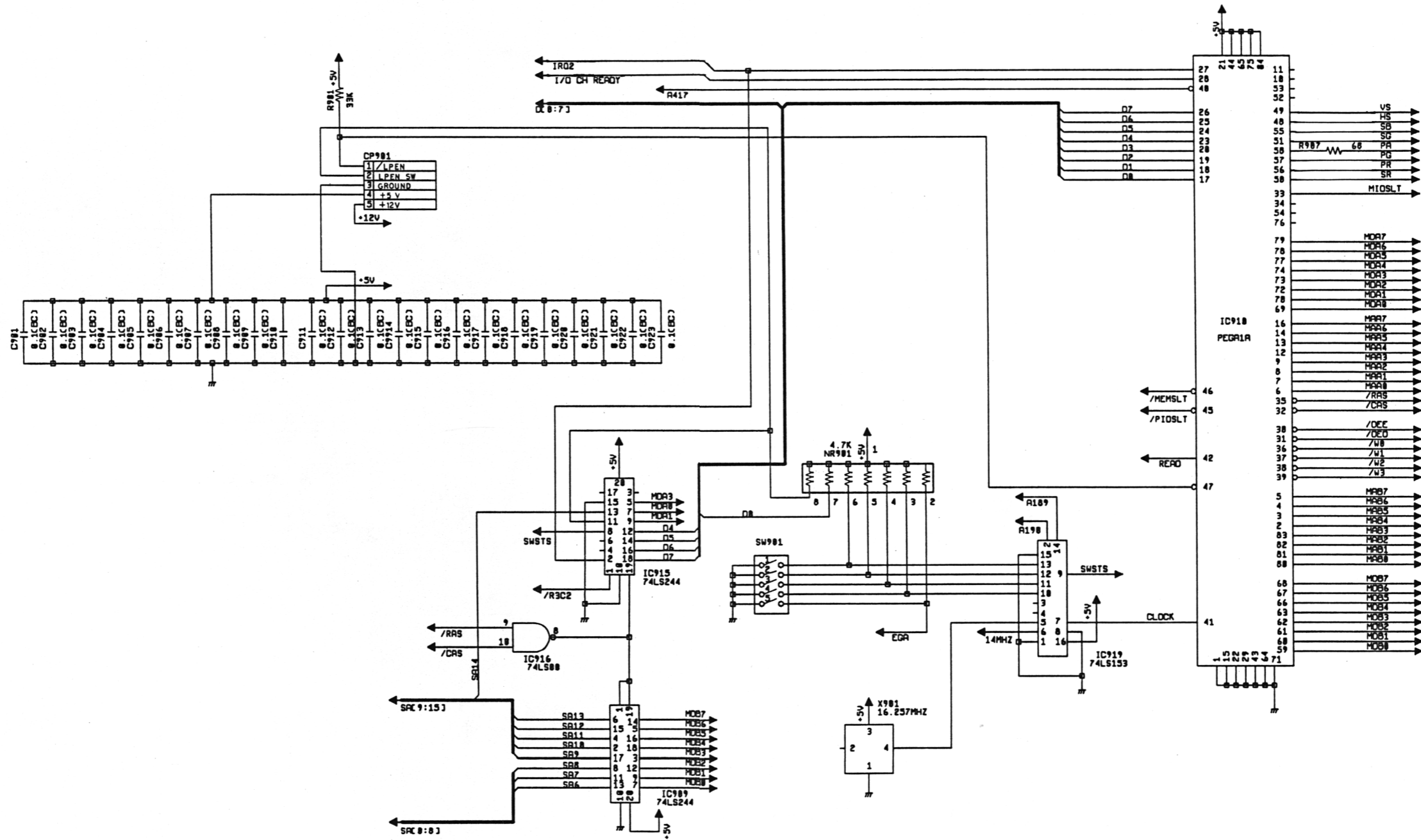
JD501
 POWER IN
 DIN
 14 PIN SOCKET

ATTENTION : LES PIÈCES REPARÉES PAR UN Δ ÉTANT DANGEREUSES AU POINT DE VUE SÉCURITÉ, N'UTILISER QUE CELLES DÉCRITES DANS LA NOMÉNCLATURE DES PIÈCES.

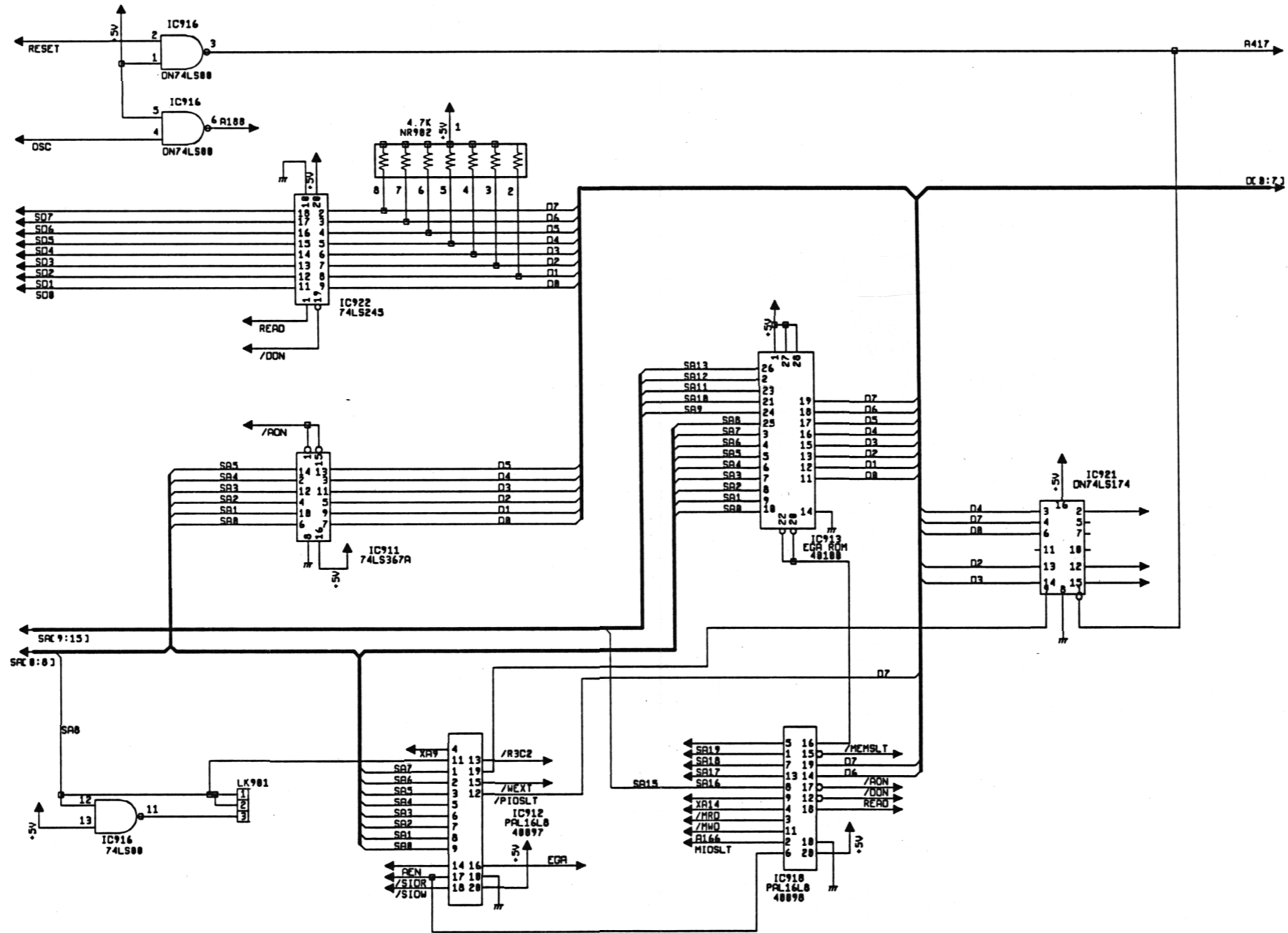
CAUTION: SINCE THESE PARTS MARKED BY Δ ARE CRITICAL FOR SAFETY, USE ONES DESCRIBED ON PARTS LIST ONLY.

NOTE: THIS SCHEMATIC DIAGRAM IS THE LATEST AT THE TIME OF PRINTING AND SUBJECT TO CHANGE WITHOUT NOTICE.

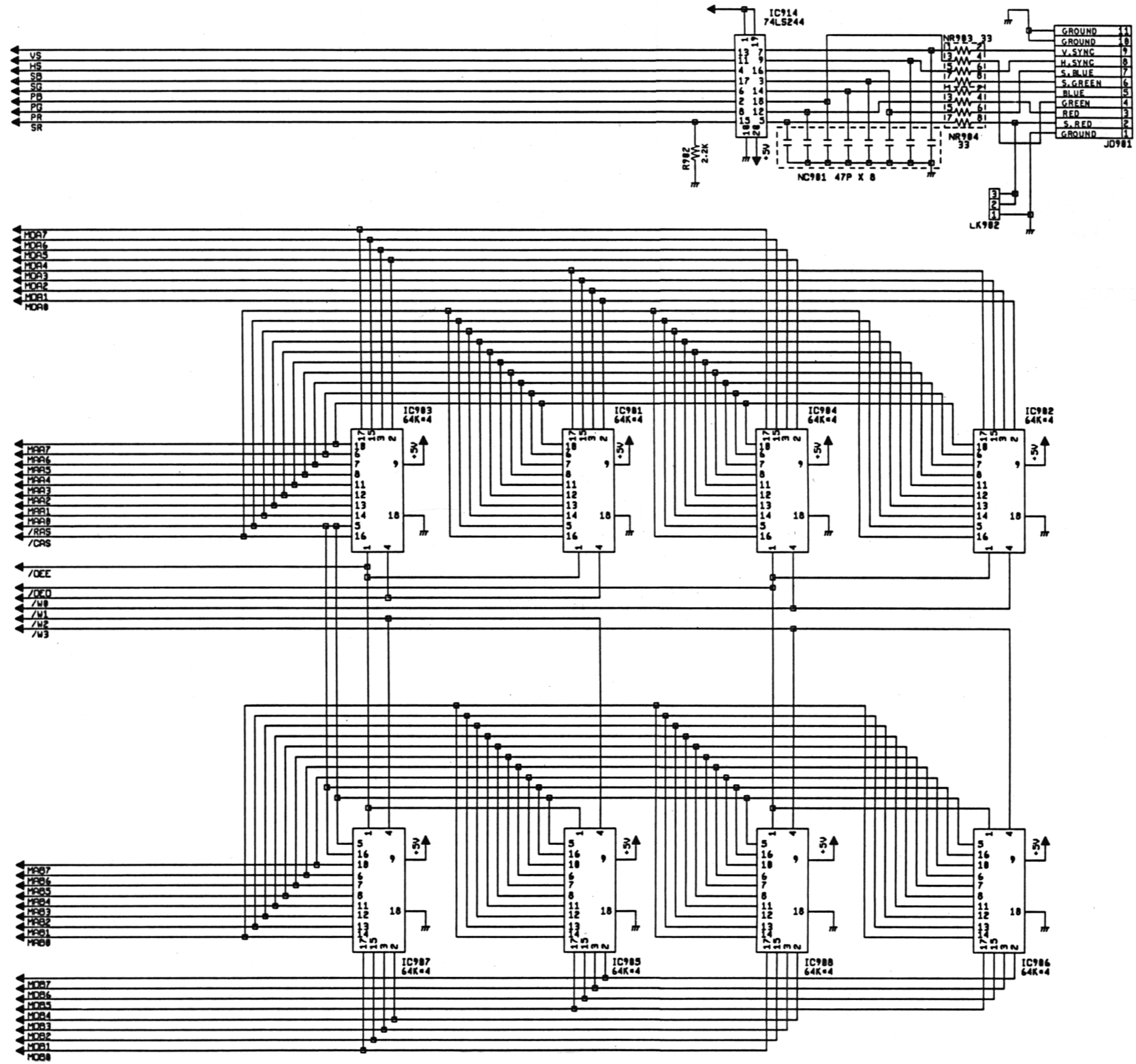
CHASSIS SCHEMATIC DIAGRAM



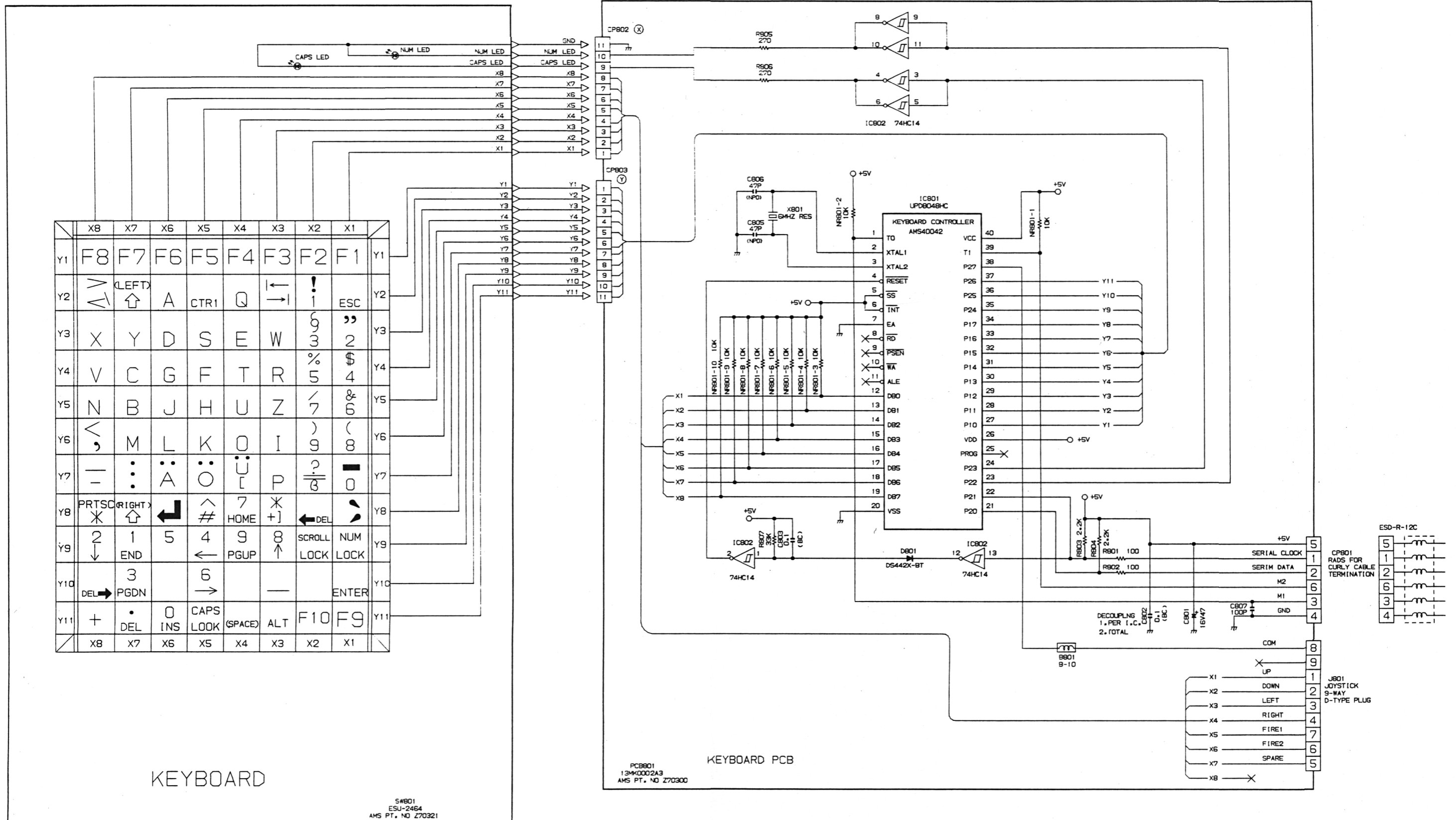
CHASSIS SCHEMATIC DIAGRAM



CHASSIS SCHEMATIC DIAGRAM



CHASSIS SCHEMATIC DIAGRAM



S#801
ESU-2464
AMS PT. NO Z70321

DIP-Schalter Einstellung

Monitor	MD	CD	ECD
Schalter			
1	off	off	off
2	off	off	on
3	on	off	on
4	off	on	off
5	on	on	off
6	on	on	on
7	on	on	on
8	off	off	on
9	off	off	off
10	off	off	off