



**WE DON'T  
DO THINGS  
BY HALVES**

HEINOLAN  
Televiisio  
ja musiikki  
Siitakatu 14 Puh. 53202

**AMSTRAD**

# CPC6128

## The COMPLETE Computer

### **Business**

By including a disc drive and 128K of RAM with the CPC6128, Amstrad has elevated the budget priced colour computer beyond being mainly a games console into the realm of serious business applications.

With the CP/M Plus disc operating system, the Amstrad CPC6128 is an ideal computer for the small business; and what with rates, rents, mortgages, HP, income tax, insurance etc., just about everyone can now benefit from running their personal affairs with the aid of a low cost computer.

Give all your correspondence the professional touch with wordprocessing software such as Amword. Plan your domestic budget, file names and addresses, organise your time more effectively and efficiently. Amsoft has programs already available to do all these tasks and many more.

### **Pleasure**

With over 300 colourful games already available covering everything from advanced flight and combat simulation to slick examples of the arcade classics, the CPC6128 has an unfair advantage over its competitors. There are shoot outs, adventures, brain teasers, card games, simulations - enough to keep the most agile and inquiring minds busy indefinitely.

### **Programmability**

The built-in ROM BASIC for the CPC6128 has many advanced sound and graphics features - volume and tone envelope control, a high speed area colour fill, and dotted line drawing.

As part of the CPC6128 software package, you will also receive an enhanced version of Dr LOGO on disc - the world famous teaching and graphics language that introduces the concepts and ideas behind writing computer programs.

# AMSTRAD

- Complete with monitor.
- Complete with disc drive.
- Complete with software:
- Complete with CP/M Plus (and CP/M 2.2).
- Complete with 128K RAM, 48K ROM.
- Complete with peripheral expansion bus.



- Complete with ports for joystick and Centronics printer.
- Complete with award winning BASIC and operating system.
- Complete with Dr LOGO.
- Complete with GSX

The three screen modes of the CPC6128 provide the ideal combinations of colour and clarity. 16 colours selected from a palette of 27 provide the ideal games medium in Mode 0 - 160x200 pixel. In Mode 1, 40 column text combines with 4 colours (from the palette of 27) to provide a

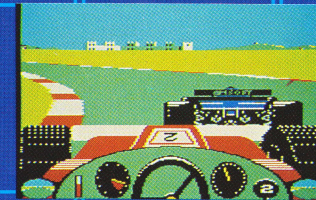
clear presentation for educational and similar applications using a graphics resolution of 320x200 pixels. Mode 2 means business, combining 80 column text with any 2 colours from the palette of 27. The graphics resolution of 640x200 pixels is

available for high definition diagrams, bar charts, pie charts etc. With 80 columns, it is possible to display the text during word processing in precisely the same way as it will appear on the paper when printed.

# CPC6128

# The AMSTRAD CPC464

- Complete with monitor.
- Complete with cassette datacorder.
- Complete with 64K RAM, 32K ROM.
- Complete with peripheral expansion bus.
- Complete with ports for joystick and Centronics printer.
- Complete with award winning BASIC and operating system.
- Complete with real typewriter style keyboard.



With over 400 colourful games already available from Amsoft and independent suppliers covering everything from advanced flight and combat simulation to slick examples of all the arcade classics, the CPC464 has an unfair advantage over its competitors. There are shoot outs, adventures, brain teasers, card games, simulations - enough to keep the most agile and inquiring minds busy indefinitely.

		TOTAL					
		Pence W for 4000					
		BACK OFF					
Month	Receipt	Jan	Feb	Mar	April	May	June
Salary			200.00				200.00
Wages	150.00	150.00	150.00	150.00	150.00	150.00	
Expenses	50.00	50.00	50.00	50.00	50.00	50.00	
Holidays	200.00	200.00	200.00	200.00	200.00	200.00	
Bank	25.00	25.00	25.00	25.00	25.00	25.00	
Maintenance	25.00	25.00	25.00	25.00	25.00	25.00	
Interest	40.00	40.00	40.00	40.00	40.00	40.00	
Car Service	200.00		200.00				
Tax			80.00				
		545.00	645.00	1040.00	545.00	1545.00	715.00
Salary	800.00	800.00	800.00	800.00	800.00	800.00	800.00
	0.00	0.00	0.00	0.00	0.00	0.00	0.00

Add the acclaimed **AMSWORD** wordprocessing software and printer to give all your correspondence the professional touch. There's lots more non-entertainment software to help you plan your domestic budget, file names and addresses, organise your time more effectively and efficiently. Software is already available to do all this - and much more!

# CPC464

## The Complete CPC464.

This low cost entry into to the world of Amstrad computing provides a complete starting point for the newcomer. You can readily upgrade with a disc drive system (up to two external disc drives may be used), or you can simply use your

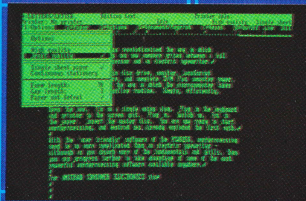
CPC464 as a sophisticated entertainment centre for the whole family. The CPC464 does what you want it to. Reliably, inexpensively and stylishly. The CPC464 has most of the sound and graphics features of the CPC6128. Any BASIC program written on the CPC464 can be loaded and run on

the CPC6128. There's a standard Centronics printer port, facilities for up to two joysticks, and the Amstrad CPC expansion bus for peripherals such as add-on discs, voice synthesisers, serial interfaces, etc.

# The AMSTRAD PCW8256

A complete Computer and Wordprocessor with letter quality-printer .....for the price of an electric typewriter!

- Complete with 90 column display monitor,
- Complete with disc drive.
- Complete with peripheral expansion bus.
- Complete with powerful Wordprocessing software.
- Complete with CP/M Plus, GSX, Dr LOGO, and Mallard BASIC.
- Complete with a superb 82 key keyboard.
- Complete with letter quality Printer.



The Amstrad PCW8256 Word processing program and printer co-operate very closely to support a host of special display features - such as super scripts, sub scripts, bold face, extended, pica, elite, high speed draft etc.

## AMSTRAD

Amstrad Consumer  
word processing  
SuperCalc2 spread  
The PCW8256

The printer provides Letter Quality operation at approximately 20 cps, or draft quality text at 90 cps (Elite pitch typestyle). Features such as pitch, italics, boldface, underline, super and sub script are provided by the built-in software.

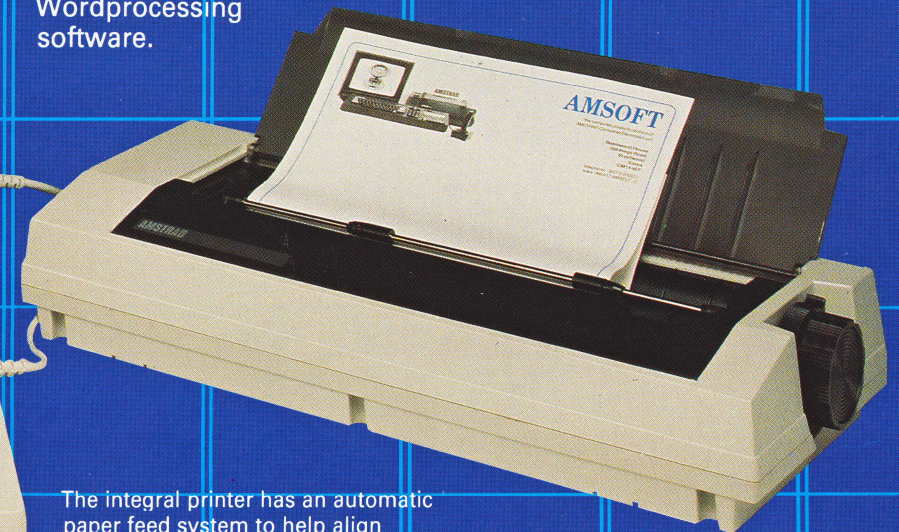
### A truly integrated system.

Everything about the PCW8256 has been designed to make it more usable. The screen has 50% more usable display

area than even an IBM PC. The keyboard has keys dedicated to word processing functions and is fully programmable to make CP/M software such as spread-

sheets, databases and communication software easier to use. The printer has an easy to use self-loading paper alignment system. And the convenient 3

inch discs are supplied in tough protective cases to withstand the wear and tear of brief cases and pockets.



The integral printer has an automatic paper feed system to help align single sheets, and a tractor mechanism for continuous stationery.

### Word Processing on the PCW8256

With the pull-down menu style of 'user friendly' software of the PCW8256, wordprocessing need be no more complicated than using an electric typewriter -although as you absorb more of the fundamentals and skills, you can progress

further to take advantage of some of the most powerful wordprocessing software available anywhere. The PCW8256 is also a powerful CP/M Plus computer, giving you access to a wide range of commercial applications software. You can prepare sales forecasts with

spreadsheet programs, perform 'what if?' operations on budgets and cash flow projections. Amstrad gives you the powerful Mallard BASIC from Locomotive Software Digital Research's Dr LOGO and the GSX Graphics System Extension,

# PCW8256



### Cassettes and Discs

Amsoft CT-15 Cassettes are offered in premium priced packs of 10. Complete with inlay card index. Amsoft CF-2 twin sided floppy discs are write protectable on both sides, simply flip over to use either side. 180K bytes formatted per side- use the master disc supplied with each interface system for the correct format program.

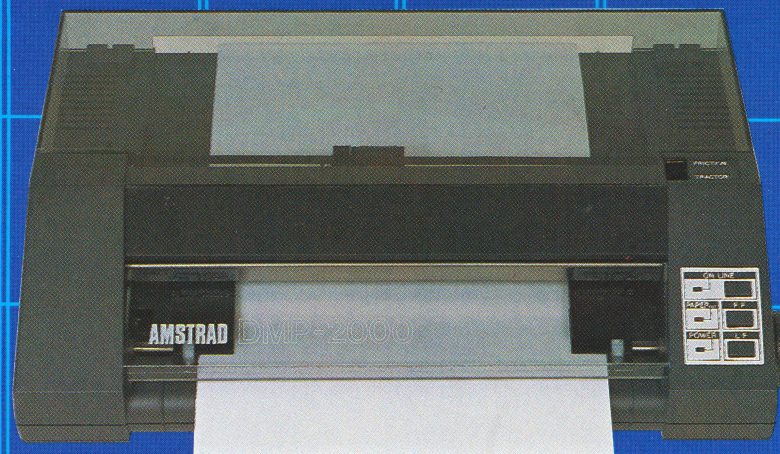


### Colour TV Modulator

The MP-2 colour TV modulator and power supply contains all the electronics necessary to power the CPC464/6128 and direct the display to a standard colour TV set. So if you have bought a monochrome monitor system, and you want to take advantage of the 27 bright colours in arcade action games, then you need the MP-2.

### Printer

The AMSTRAD DMP2000 printer combines low cost with high performance to produce a dot matrix printer which is ideal for any application; personal computer or small business, where high speed or high quality is required. As well as a vast range of typeface combinations to choose from, the DMP2000 is capable of high resolution pin addressable graphics printing.



### Cassette Interface

If you've got an existing store of CPC464 programs and data on cassette\*, then you'll be pleased to know that the CPC6128 comes complete with a built-in cassette interface to allow you to transfer from cassette onto disc (and vice versa). You'll need to use a standard cassette recorder in conjunction with the CPC6128.



### Joysticks

Amstrad's new JY-2 joystick features a fast and positive click action that puts you in complete control of anything from the Earth's defences to Roland's fearless travels. A socket built into the base of the joystick enables a second joystick to be connected to the computer for two player games where the option is available.



### Additional Disc Drive

Two drives are better than one - and it's simplicity itself to expand the CPC464 with the DDI-1 or the standard CPC6128 by adding an extra FD-1 to double the on-line storage capacity.



# PERIPHERALS

### Expansion facilities

The expansion connector at the rear of CPC computers contains all the signals necessary to implement a wide range of add-on peripherals. Modems, light pens, speech synthesisers and serial interfaces are amongst products already available or in development by either Amstrad or independent vendors.

Modems are not directly supplied by Amstrad, but our serial interface (available separately) will communicate with any standard RS232C modem on the market. Modems allow computers to communicate using standard telephone lines -so you can connect to information and message handling services such as PRESTEL, BT Gold, The Source etc.

All systems come complete with a substantial User Guide that includes information for the novice and the experienced programmer.

## PCW8256

The **PCW8256** is a completely self contained wordprocessing system including a high performance combined letter quality/ high speed draft quality printer, monitor, disc drive, computer and custom word processing software.

Additionally, the **PCW8256** is supplied with CP/M Plus, and with GSX graphics enhancement. Locomotive Software's Mallard extended BASIC interpreter and the educational and training language, Dr LOGO is also supplied.

### TECHNICAL

#### SCREEN:

High Resolution Green Monitor.  
90 columns, 32 lines of text.

#### DISC:

An integral "flip over" 3" disc conforming to AMSTRAD established CP/M standards. 180k of formatted storage space per side. A second 1M byte drive may be fitted optionally.

#### KEYBOARD AND SOFTWARE

An 82 key keyboard includes function keys dedicated to the word processing software provided with the system.

The word processing software allows for the creation of documents up to the maximum available disc capacity, and will permit simultaneous printing and editing. Features such as pagination, automatic paragraph alignment and re-alignment are provided, together with a powerful collection of editing features for cut/paste etc. The large area screen includes a series of pull-down menus accessed by simple function key selection controlling all main edit controls and text format commands.

Under CP/M control, a wide range of standard software including products such as Supercalc, Multiplan, Cardbox etc. will run immediately using the VT52 terminal emulation provided with the CP/M Plus VDU system.

The Digital Research GSX graphic system is supplied with the PCW8256 to provide a standard software interface for graphical programs. Dr LOGO is also supplied, and is compatible with Dr LOGO supplied for the CPC6128, and upwards compatible with Dr LOGO supplied with AMSTRAD CP/M 2.2 systems.

#### CPU AND RAM:

A Z80A microprocessor with 256k bytes of RAM is provided as standard. Approximately 112k of this memory is organised for use as a RAM-disc to enhance the speed of operation of the many CP/M programs using overlay techniques.

Separate custom microprocessors are used to control the printer and the keyboard.

#### PRINTER:

The integral printer mechanism provides letter quality operation at approximately 20 cps, or draft quality text at 90 cps (Elite pitch typestyle). Features such as pitch, italics, boldface, underline, super and sub script are provided by the built-in software.

A tractor feed is supplied for continuous stationary, although single sheet operation is available with an automatic paper alignment system.

#### OPTIONS:

An optional RS232 Serial and Centronics parallel interface may be fitted if required.

## CPC6128

### TECHNICAL SPECIFICATION

#### LSI CHIPS:

**Z80A** processor running at 4MHz  
**128K** bytes of RAM arranged in two 64K banks (over 41K available to user in BASIC, 61K available TPA to CP/M Plus)  
**48K** bytes of ROM containing BASIC, the operating system and disc extensions.  
**6845** CRT controller device  
**AY-3-8912** sound generator chip 3 voice, 8 octaves  
**8255** parallel I/O device  
**7653** Floppy disc controller

#### DISPLAY SPECIFICATION:

Display Mode	Mode 1	Mode 2	Mode 0
No. of colours	4 from 27	2 from 27	16 from 27
Vertical dots	200	200	200
Horizontal dots	320	640	160
Horizontal characters	40	80	20

#### KEYBOARD:

74 keys - qwerty style, numeric cluster, cursor and copy cursor, return, enter, shift, caps lock, tab, escape, delete, clear, control.

#### CASSETTE INTERFACE:

Write speed software selectable - 1K baud or 2K baud, read speed automatically established by software. Motor on/off controlled by software.

#### ADD-ON ABILITY:

Additional compact floppy disc drive system, type FD-1, Centronics compatible printer, Joystick(s), and various peripherals including up to 252 additional 16K ROMs.

#### EXTERNAL SOCKETS:

PCB edge connectors for general purpose expansion and Centronics parallel printer.  
Disc drive 2 socket (Use DI-2 connecting lead)  
9 Pin D-type socket for joystick (Amsoft type JY2)  
6 Pin DIN socket for - RGB and sync  
- luminance and sync.

5 Pin DIN socket for external cassette recorder  
3.5mm stereo socket for stereo sound output  
5mm plug and lead to connect to 12v (disc) power socket on the monitor  
5mm socket for CPC6128 5v power supply (supplied exclusively from monitor)

#### DIMENSIONS (mm): WEIGHTS (kg): POWER SUPPLY:

Keyboard	510 x 48 x 170	Keyboard	2.0	Screen System: 240V
CTM644	375 x 340 x 365	CTM644	10.6	AC 50Hz (keyboard
GT65	305 x 315 x 335	GT65	6.3	and disc drive power
Joystick	90 x 170 x 100	Joystick	0.3	supplied by screen
Modulator	120 x 70 x 170	Modulator	1.4	system)

## CPC464

### TECHNICAL SPECIFICATION

#### LSI CHIPS:

**Z80A** processor running at 4MHz  
**64K** bytes of RAM (over 42K available to user)  
**32K** bytes of ROM containing BASIC operating system  
**6845** CRT controller device  
**AY-3-8912** sound generator chip 3 voice, 8 octave  
**8255** parallel I/O device.

#### DISPLAY SPECIFICATION:

Display Mode	Mode 1	Mode 2	Mode 0
No. of colours	4 from 27	2 from 27	16 from 27
Vertical dots	200	200	200
Horizontal dots	320	640	160
Horizontal characters	40	80	20

#### KEYBOARD:

74 keys - qwerty style, numeric cluster, cursor and copy cursor, large enter, shift, caps lock, tab, escape, delete, clear, control.

#### DATACORDER:

Write speed software selectable - 1K baud or 2K baud, read speed automatically established by software. Write protect interlock, Motor on/off controlled by software.

#### ADD-ON ABILITY:

Compact floppy disc drive system (DDI-1) including CP/M 2.2 and Dr LOGO language. Centronics compatible printer. Joystick(s). Additional ROMs.

#### EXTERNAL SOCKETS:

PCB edge connectors for general purpose expansion and Centronics parallel printer.  
9 Pin D-type socket for joystick  
6 Pin DIN socket for - RGB and sync  
- luminance and sync.

3.5mm socket for stereo sound output  
5mm socket for CPC464 power supply (supplied exclusively from monitor)

#### DIMENSIONS (mm): WEIGHTS (kg): POWER SUPPLY:

Keyboard	580 x 70 x 170	Keyboard	2.4	Screen System: 240V
CTM644	375 x 340 x 365	CTM644	10.6	AC 50Hz (keyboard
GT65	305 x 315 x 335	GT65	6.3	and datacorder power
Joystick	90 x 170 x 100	Joystick	0.3	supplied by screen
Modulator	120 x 70 x 170	Modulator	1.4	system)

#### AMDOS - Amstrad's disc operating system

AMDOS expands Locomotive BASIC, adding additional commands to make full use of the disc files. AMDOS enables BASIC programs to access disc files in the same manner as cassette files, in fact the same commands are used with file names conforming to CP/M conventions.

AMDOS and CP/M both share the same file structure and can read and write each other's files. The CPC6128 is compatible with programs developed for Amstrad CP/M 2.2, and will run Amstrad CP/M 2.2 system discs. Programs developed specifically for CP/M Plus with GSX will not run on Amstrad CP/M 2.2.

# SPECIFICATIONS

**AMSTRAD USER** **95p**  
September 1985

**COMPUTER**

**On Test**  
Amstrad's RS232C Interface

**Cobol for CP/M**

**Jet Set Willy**  
Map, Pokes and Playing Hints

**Program Listings**  
Sabotage - Save the World (Again)  
Crazy Legs - Dodge those Lasers  
Super-Power Rom Board Reviewed

**THE ROCKY HORROR SHOW**  
Game of the



**Over 150 titles already available!**



**AMSOFT**  
Software and Peripherals Catalogue



**Software is a breeze.**  
The CPC6128 with its built-in disc drive and 61K CP/M Plus program area has access to over 8000 programs in the CP/M 80 library. There's a plethora of entertainment and utility software after a year of experience with the CPC464, plus a fantastic library of free software to members of the CP/M Users' Group for either CP/M 2.2 or CP/M Plus. High quality games and utilities developed using the guidelines in our programmers' manuals on cassette and disc for the CPC464/664 will run on the CPC6128. Utilities such as 'Screen Designer' and 'Devpac' will help you develop graphics and machine code software. Alternative languages such as Pascal, Forth and C will allow you to continue to develop your skills as a programmer.

**AMSTRAD**

**AMSTRAD CONSUMER ELECTRONICS plc.,**  
Brentwood House, 169 Kings Road,  
Brentwood, Essex CM14 4EF.  
Telephone: (0277) 228888

In keeping with our policy of continually improving our service, and the technical quality of our products, we reserve the right to change component types, manufacturers, sources of supply or technical specification at any time.

**AMSOFT**

AMSTRAD, AMSOFT, AMSDOS, CPC464, CPC6128 and PCW8256 are trademarks of AMSTRAD Consumer Electronics plc. CP/M Plus, CP/M, GSX and Dr LOGO are trade marks of Digital Research Inc. IBM and IBM PC are trade marks of International Business Machines Inc.