





CPC6128

PALETTE DES COULEURS

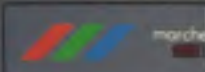
01	02	03	04	05	06	07	08	09	10	11	12	13	14	15	16	17	18	19	20	21	22	23	24	25	26	27	28	29	30	31	32
33	34	35	36	37	38	39	40	41	42	43	44	45	46	47	48	49	50	51	52	53	54	55	56	57	58	59	60	61	62	63	64

NUMÉROS DES TOUCHES

LECTEUR DE DISQUETTE

Commodore Keyboard Custom 728K

AMSTRAD Ordinateur Personnel Couleur 128k



LECTEUR DE DISQUETTE

NUMÉROS DES TOUCHES



PALETTE DES COULEURS

0 Noir	9 Vert	18 Vert Vif
1 Bleu	10 Turquoise	19 Vert marin
2 Bleu Vif	11 Bleu ciel	20 Turquoise Vif
3 Rouge	12 Jaune	21 Vert citron
4 Magenta	13 Blanc	22 Vert Pastel
5 Mauve	14 Bleu Pastel	23 Turquoise Pastel
6 Rouge Vif	15 Orange	24 Jaune Vif
7 Pourpre	16 Rose	25 Jaune Pastel
8 Magenta Vif	17 Magenta Pastel	26 Blanc brillant

CPC6128



AMSTRAD

Ordinateur Personnel Couleur 128k

ESC

1
&

2
é

3
"

4
,

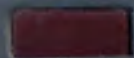
5
(

6
]

7
è

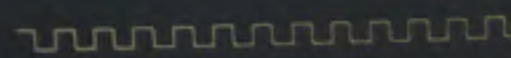


marche



LE

NU



LECTEUR DE DISQUETTE

NUMÉROS DES TOUCHES

66	64	65	57	56	49	48	41	40	33	32	25	24	16	79	10	11	3
68	67	59	58	50	51	43	42	35	34	27	26	17	18		20	12	4
70	69	60	61	53	52	44	45	37	36	29	28	19			13	14	5
21	71	63	62	55	54	46	38	39	31	30	22	21			15	0	7
23	9					47						6			8	2	1

PALETTE DES COULEURS

0 Noir	9 Vert	18 Vert Vif
1 Bleu	10 Turquoise	19 Vert marin
2 Bleu Vif	11 Bleu ciel	20 Turquoise Vif
3 Rouge	12 Jaune	21 Vert citron
4 Magenta	13 Blanc	22 Vert Pastel
5 Mauve	14 Bleu Pastel	23 Turquoise Pastel
6 Rouge Vif	15 Orange	24 Jaune Vif
7 Pourpre	16 Rose	25 Jaune Pastel
8 Magenta Vif	17 Magenta Pastel	26 Blanc brillant

CPC6128



MICRO-INFORMATIQUE
MONTAIGNE
Librairie - Papeterie
8, rue Pré-Benevix
Adresse Postale :
431, Av. G. Clemenceau - 74300 CLUSES
Tél. : (50) 98.85.12



AMSTRAD
MODELE CPC 6128
128K MICROPROCESSEUR
COURANT 5V DC 1.7 AMP/
12V DC 0.4 AMP
DEBRANCHER APRES
CHAQUE UTILISATION
ATTENTION FRAGILE
NE RETIRER AUCUNE VIS
FABRIQUE EN COREE
NO
DE SERIE 533-8623289



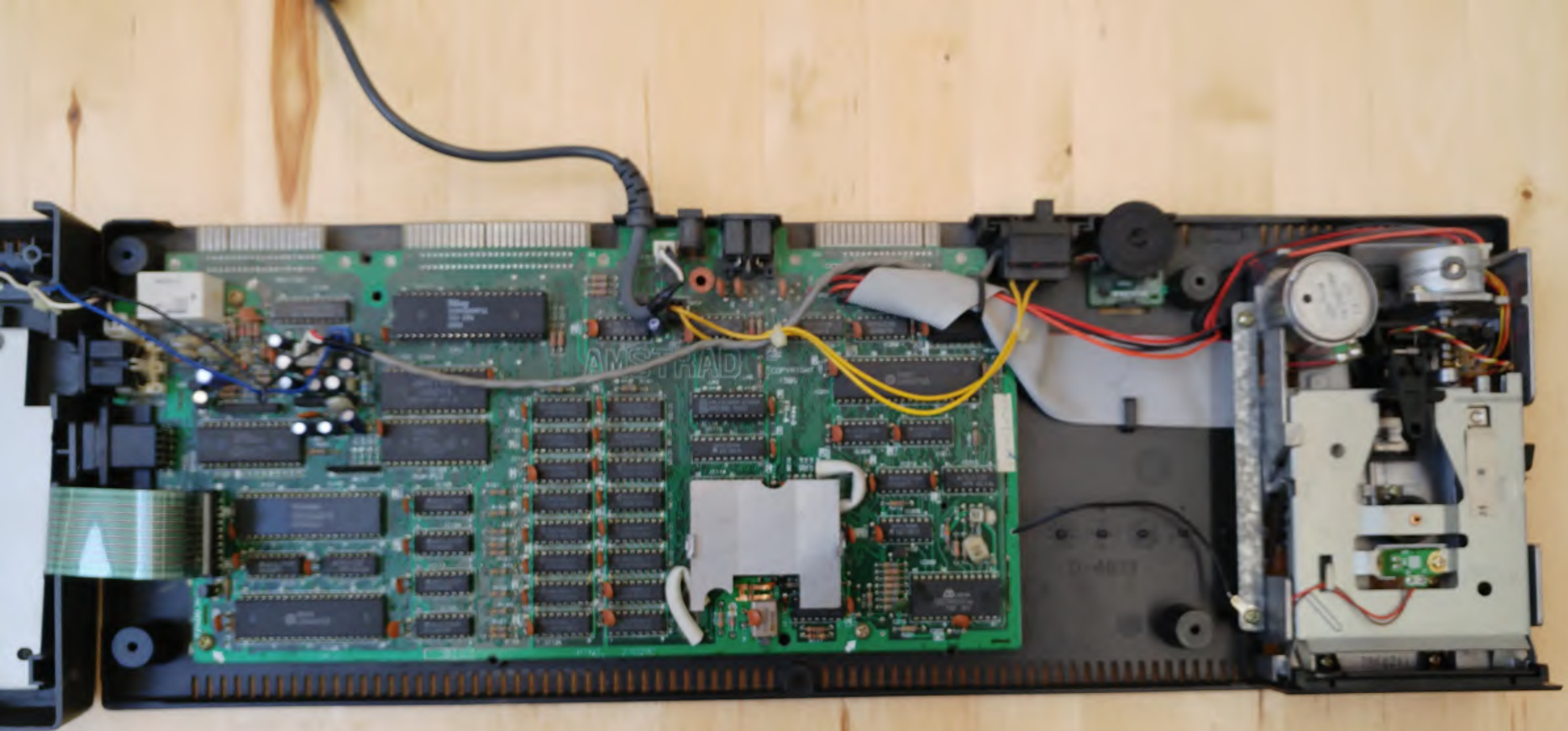
erie
vix
enceau - 74300 CLUSES
(50) 98.85.12

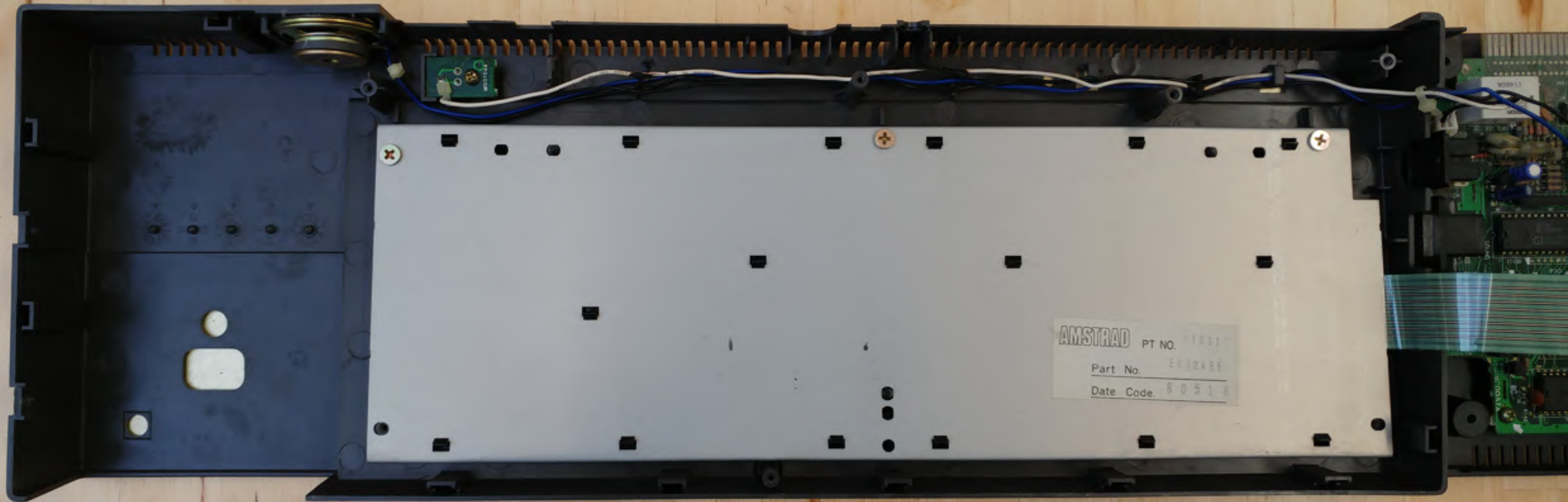
AMSTRAD

MODELE CPC 6128
128K MICROPROCESSEUR
COURANT 5V DC 1.7 AMP/
12V DC 0.4 AMP
DEBRANCHER APRES
CHAQUE UTILISATION
ATTENTION FRAGILE
NE RETIRER AUCUNE VIS
FABRIQUE EN COREE

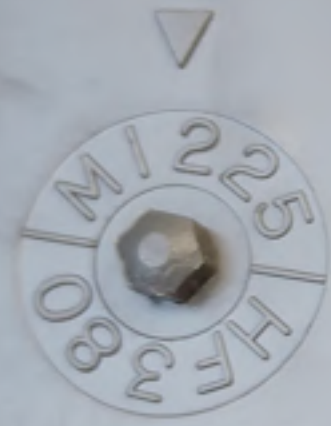
NO. DE SERIE **533-8623289**

MFR'S VERSION
J





AMSTRAD PT NO. 17031
Part No. E502455
Date Code 80518



AMSTRAD

PT NO.

770311

Part No.

ESU2455

Date Code.

80516



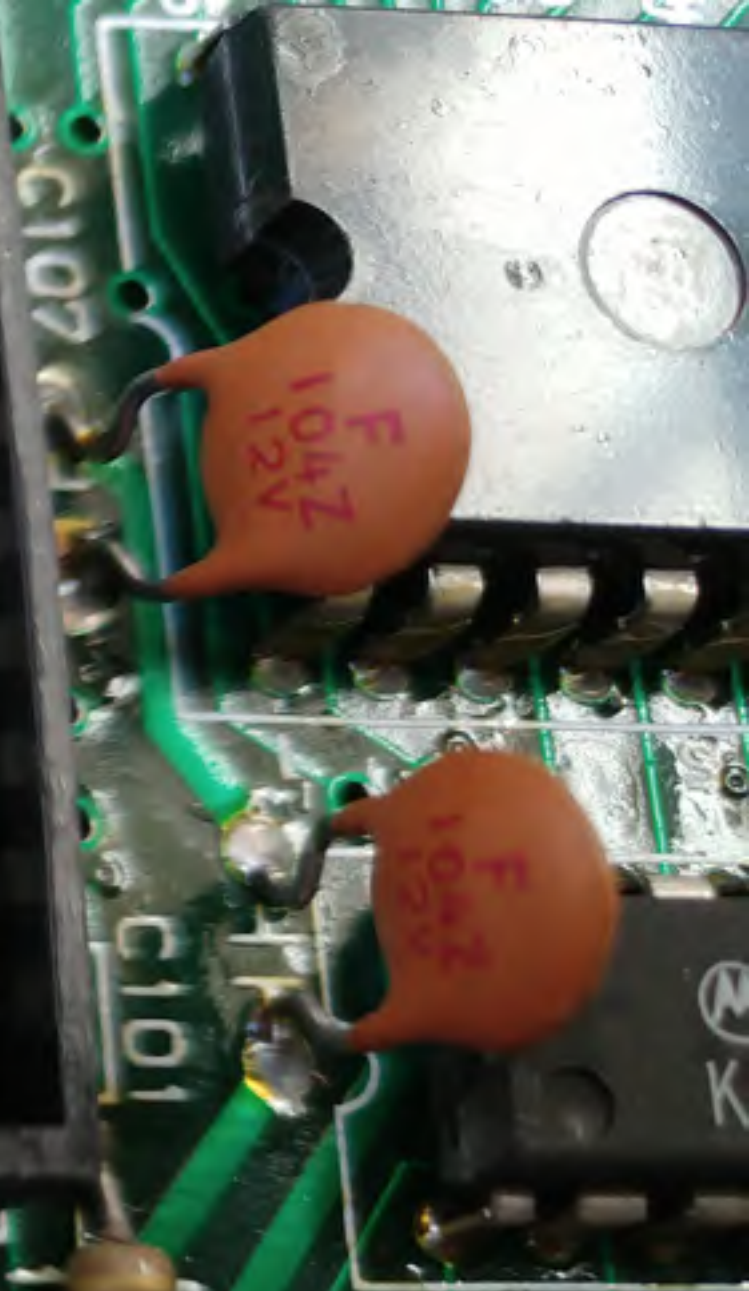
J103
SOUND



MC0057A

20

Q101
CP101MFC00



F 104Z
12V

F 103Z
10V

C101

C102



PTNO. Z70290

- IC127 KM4164B-15 816C KOREA
- IC128 KM4164B-15 816C KOREA
- IC129 KM4164B-15 816C KOREA
- IC130 KM4164B-15 752C KOREA
- IC131 KM4164B-15 816C KOREA
- IC132 KM4164B-15 816C KOREA
- IC133 KM4164B-15 816C KOREA
- IC134 KM4164B-15 816C KOREA

- IC135 74HC05
- IC136 74HC05
- IC137 74HC05
- IC138 74HC05
- IC139 74HC05
- IC140 74HC05
- IC141 74HC05
- IC142 74HC05
- IC143 74HC05
- IC144 74HC05
- IC145 74HC05
- IC146 74HC05
- IC147 74HC05
- IC148 74HC05
- IC149 74HC05
- IC150 74HC05
- IC151 74HC05
- IC152 74HC05
- IC153 74HC05
- IC154 74HC05
- IC155 74HC05
- IC156 74HC05
- IC157 74HC05
- IC158 74HC05
- IC159 74HC05
- IC160 74HC05
- IC161 74HC05
- IC162 74HC05
- IC163 74HC05
- IC164 74HC05
- IC165 74HC05
- IC166 74HC05
- IC167 74HC05
- IC168 74HC05
- IC169 74HC05
- IC170 74HC05
- IC171 74HC05
- IC172 74HC05
- IC173 74HC05
- IC174 74HC05
- IC175 74HC05
- IC176 74HC05
- IC177 74HC05
- IC178 74HC05
- IC179 74HC05
- IC180 74HC05
- IC181 74HC05
- IC182 74HC05
- IC183 74HC05
- IC184 74HC05
- IC185 74HC05
- IC186 74HC05
- IC187 74HC05
- IC188 74HC05
- IC189 74HC05
- IC190 74HC05
- IC191 74HC05
- IC192 74HC05
- IC193 74HC05
- IC194 74HC05
- IC195 74HC05
- IC196 74HC05
- IC197 74HC05
- IC198 74HC05
- IC199 74HC05
- IC200 74HC05
- IC201 74HC05
- IC202 74HC05
- IC203 74HC05
- IC204 74HC05
- IC205 74HC05
- IC206 74HC05
- IC207 74HC05
- IC208 74HC05
- IC209 74HC05
- IC210 74HC05
- IC211 74HC05
- IC212 74HC05
- IC213 74HC05
- IC214 74HC05
- IC215 74HC05
- IC216 74HC05
- IC217 74HC05
- IC218 74HC05
- IC219 74HC05
- IC220 74HC05
- IC221 74HC05
- IC222 74HC05
- IC223 74HC05
- IC224 74HC05
- IC225 74HC05
- IC226 74HC05
- IC227 74HC05
- IC228 74HC05
- IC229 74HC05
- IC230 74HC05
- IC231 74HC05
- IC232 74HC05
- IC233 74HC05
- IC234 74HC05
- IC235 74HC05
- IC236 74HC05
- IC237 74HC05
- IC238 74HC05
- IC239 74HC05
- IC240 74HC05
- IC241 74HC05
- IC242 74HC05
- IC243 74HC05
- IC244 74HC05
- IC245 74HC05
- IC246 74HC05
- IC247 74HC05
- IC248 74HC05
- IC249 74HC05
- IC250 74HC05
- IC251 74HC05
- IC252 74HC05
- IC253 74HC05
- IC254 74HC05
- IC255 74HC05
- IC256 74HC05
- IC257 74HC05
- IC258 74HC05
- IC259 74HC05
- IC260 74HC05
- IC261 74HC05
- IC262 74HC05
- IC263 74HC05
- IC264 74HC05
- IC265 74HC05
- IC266 74HC05
- IC267 74HC05
- IC268 74HC05
- IC269 74HC05
- IC270 74HC05
- IC271 74HC05
- IC272 74HC05
- IC273 74HC05
- IC274 74HC05
- IC275 74HC05
- IC276 74HC05
- IC277 74HC05
- IC278 74HC05
- IC279 74HC05
- IC280 74HC05
- IC281 74HC05
- IC282 74HC05
- IC283 74HC05
- IC284 74HC05
- IC285 74HC05
- IC286 74HC05
- IC287 74HC05
- IC288 74HC05
- IC289 74HC05
- IC290 74HC05
- IC291 74HC05
- IC292 74HC05
- IC293 74HC05
- IC294 74HC05
- IC295 74HC05
- IC296 74HC05
- IC297 74HC05
- IC298 74HC05
- IC299 74HC05
- IC300 74HC05

- R101
- R102
- R103
- R104
- R105
- R106
- R107
- R108
- R109
- R110
- R111
- R112
- R113
- R114
- R115
- R116
- R117
- R118
- R119
- R120
- R121
- R122
- R123
- R124
- R125
- R126
- R127
- R128
- R129
- R130
- R131
- R132
- R133
- R134
- R135
- R136
- R137
- R138
- R139
- R140
- R141
- R142
- R143
- R144
- R145
- R146
- R147
- R148
- R149
- R150
- R151
- R152
- R153
- R154
- R155
- R156
- R157
- R158
- R159
- R160
- R161
- R162
- R163
- R164
- R165
- R166
- R167
- R168
- R169
- R170
- R171
- R172
- R173
- R174
- R175
- R176
- R177
- R178
- R179
- R180
- R181
- R182
- R183
- R184
- R185
- R186
- R187
- R188
- R189
- R190
- R191
- R192
- R193
- R194
- R195
- R196
- R197
- R198
- R199
- R200
- R201
- R202
- R203
- R204
- R205
- R206
- R207
- R208
- R209
- R210
- R211
- R212
- R213
- R214
- R215
- R216
- R217
- R218
- R219
- R220
- R221
- R222
- R223
- R224
- R225
- R226
- R227
- R228
- R229
- R230
- R231
- R232
- R233
- R234
- R235
- R236
- R237
- R238
- R239
- R240
- R241
- R242
- R243
- R244
- R245
- R246
- R247
- R248
- R249
- R250
- R251
- R252
- R253
- R254
- R255
- R256
- R257
- R258
- R259
- R260
- R261
- R262
- R263
- R264
- R265
- R266
- R267
- R268
- R269
- R270
- R271
- R272
- R273
- R274
- R275
- R276
- R277
- R278
- R279
- R280
- R281
- R282
- R283
- R284
- R285
- R286
- R287
- R288
- R289
- R290
- R291
- R292
- R293
- R294
- R295
- R296
- R297
- R298
- R299
- R300

616R0A0
616R0A0
M558F

A74LS132
JAPAN 60.6N

ZAA8616768





SN74LS145N
KKCB8815

74LS132
JAPAN 60.6N



SN74LS153N
KKCU8816C



SN74LS153
KKCU8816C



SN74LS153
KKCU8816C



SN74LS153
KKCU8816C

8805S
UM6845R

IC108 801C1

CRT.C

01MJC0057A

IC101

IC110

IC101

IC110

IC113

IC105

R142

R113

R113

R142



33

IC106

SI

273N
3749

K
RED

CP303

C301

R322

ROM-FDD

IC204

CPU

AMSTRAD

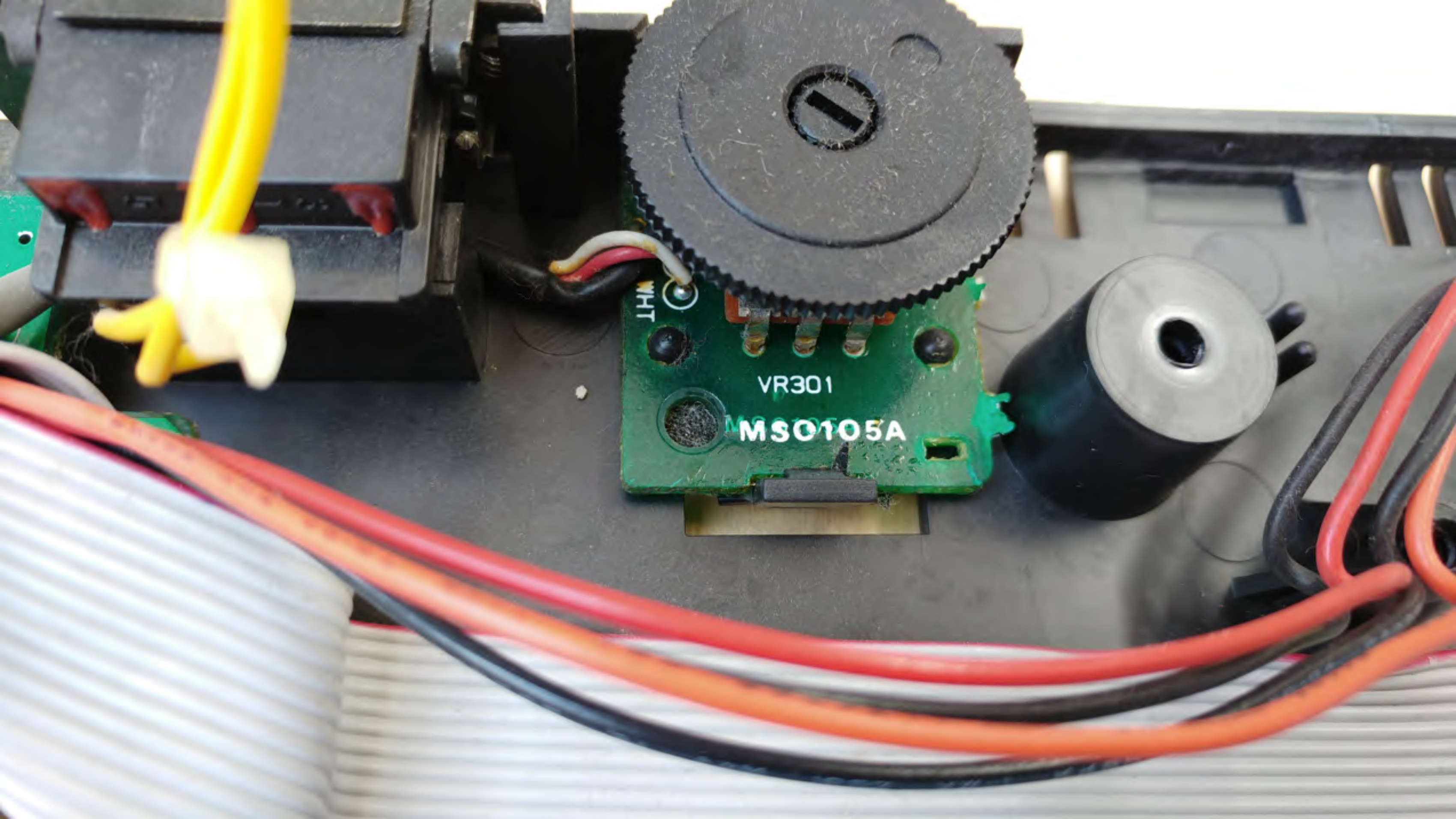
Zilog
Z0840004PSC
Z80 CPU
8808

R102

IC207

R160

AMSTRAD



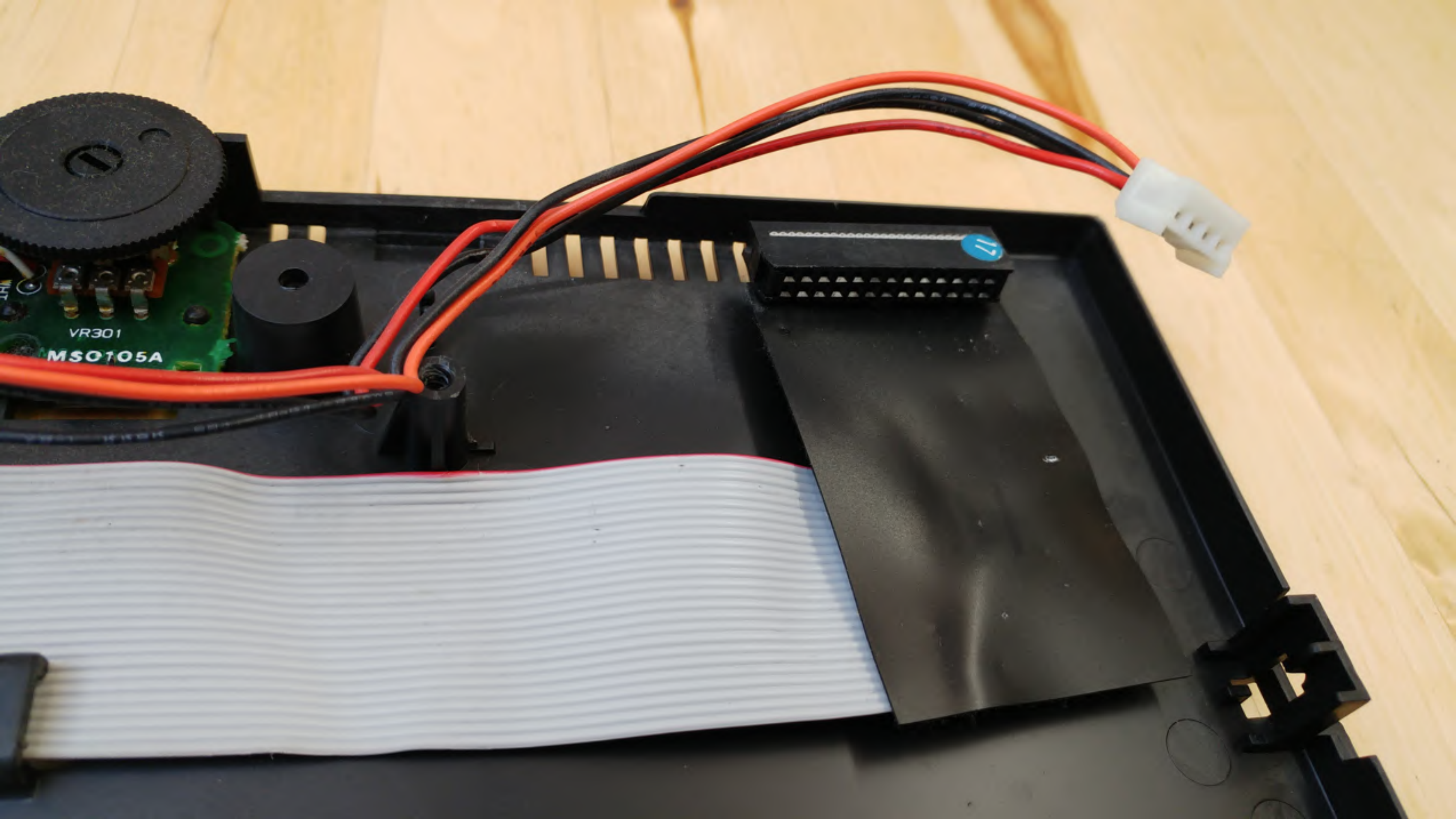
LHT

VR301

MS0105A



D-4613

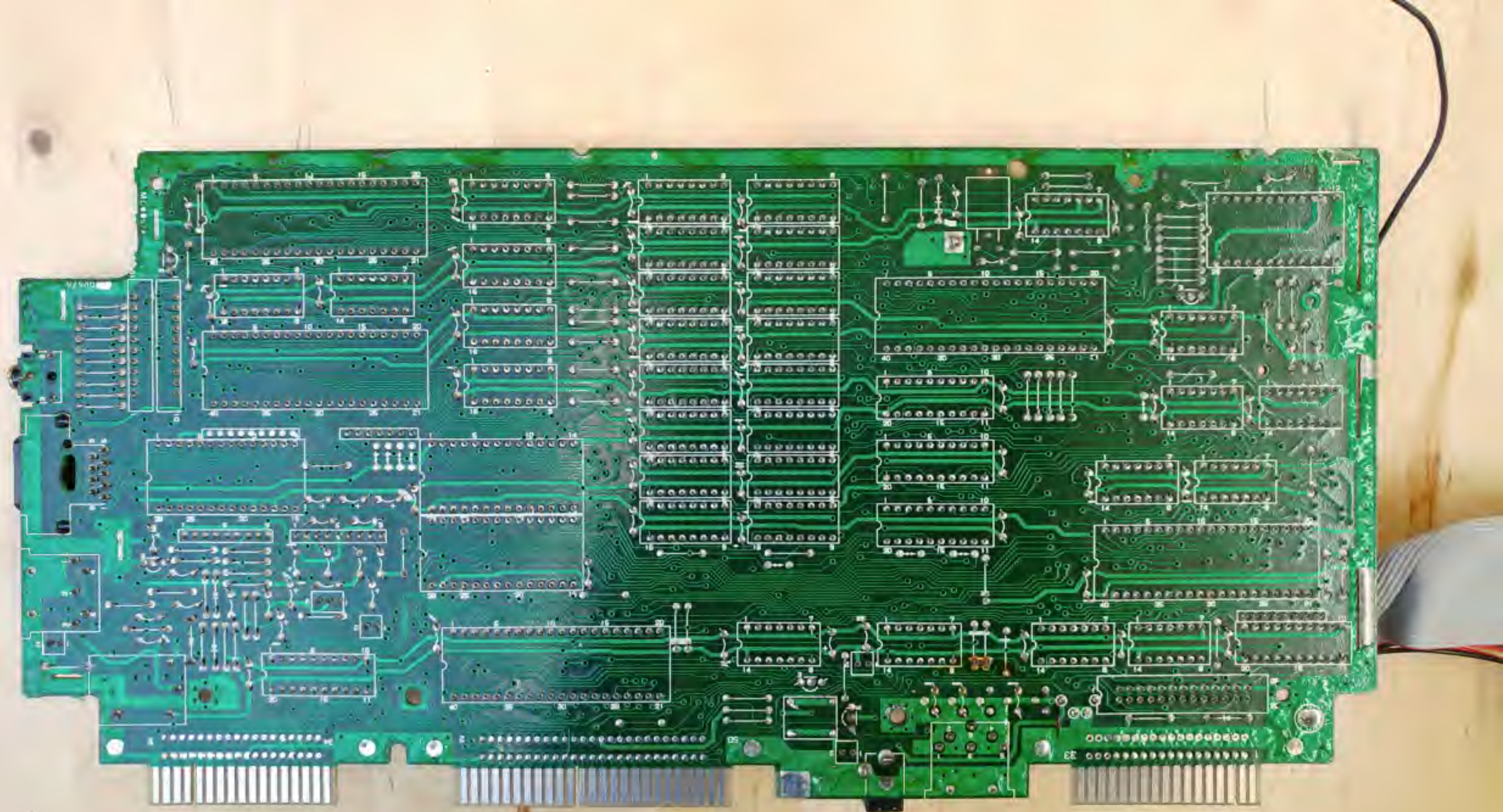


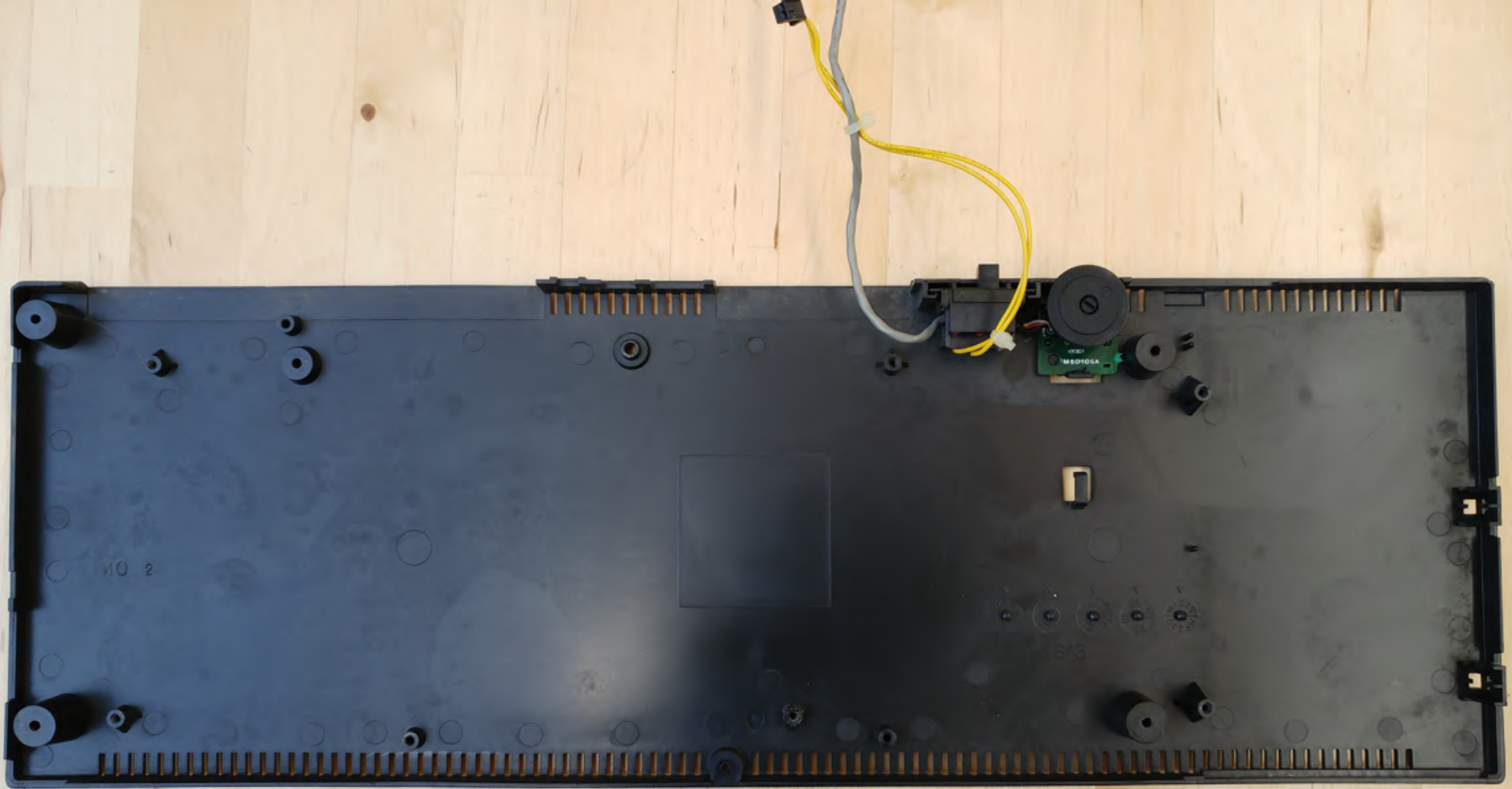
VR301

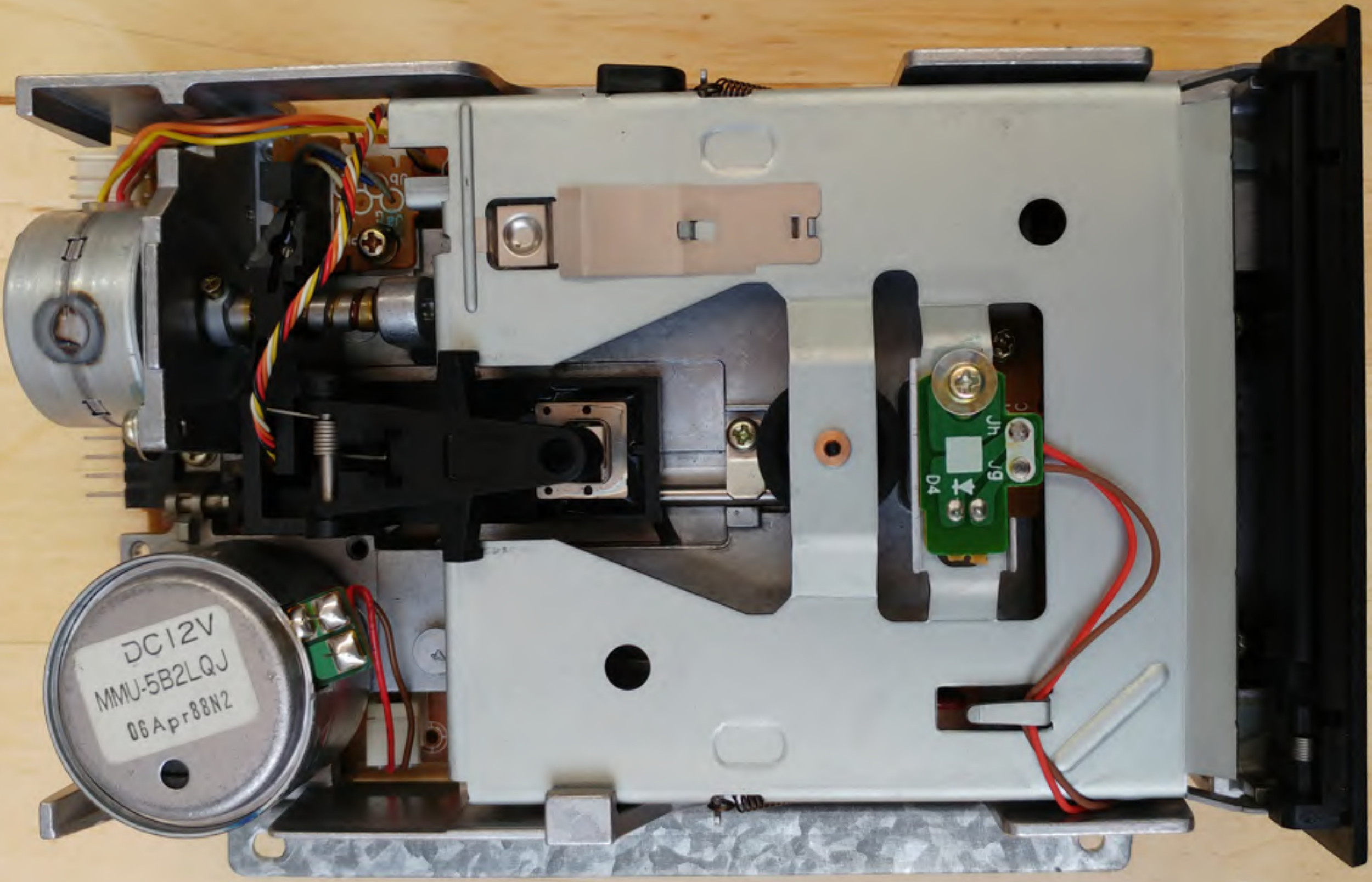
MS0105A

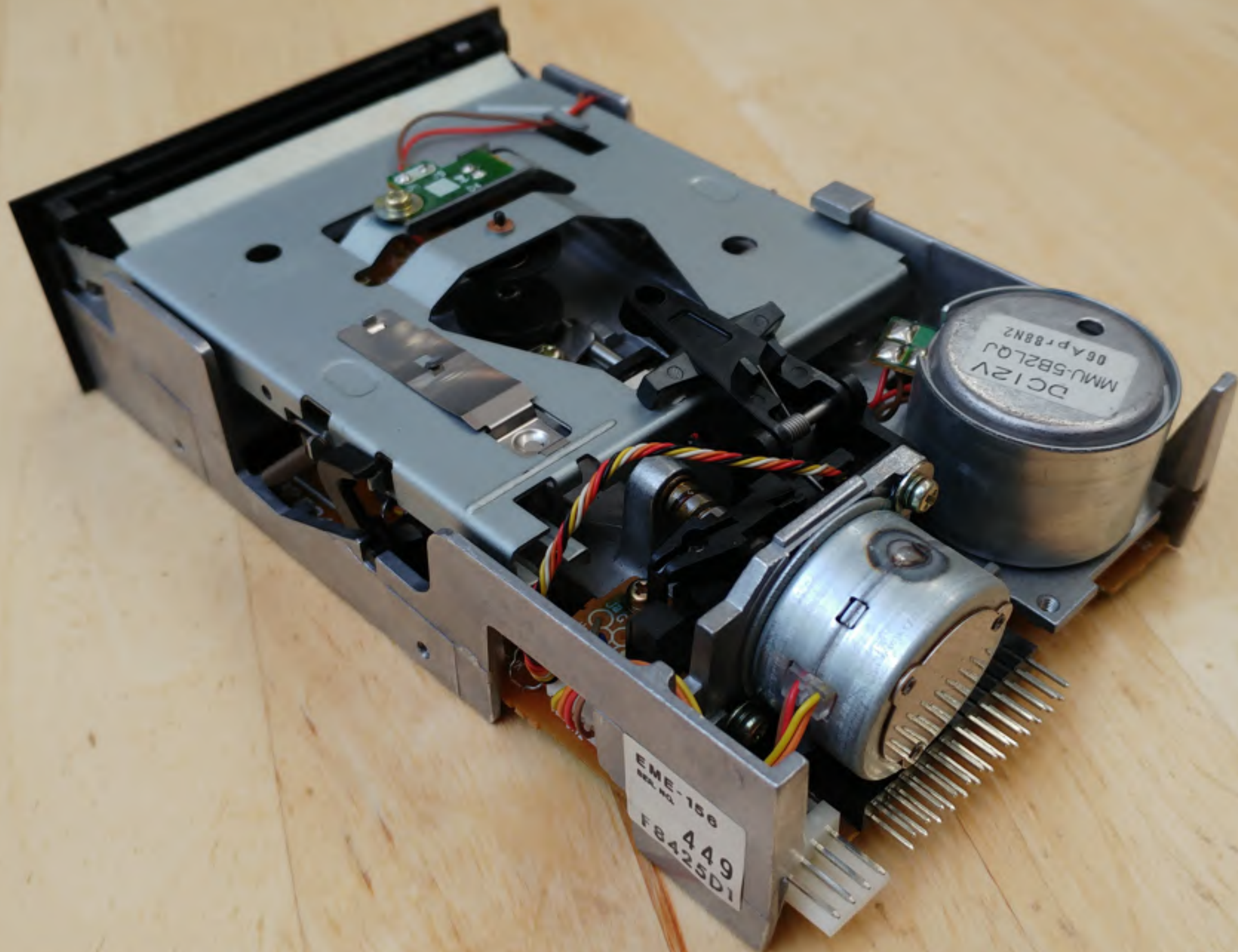
17





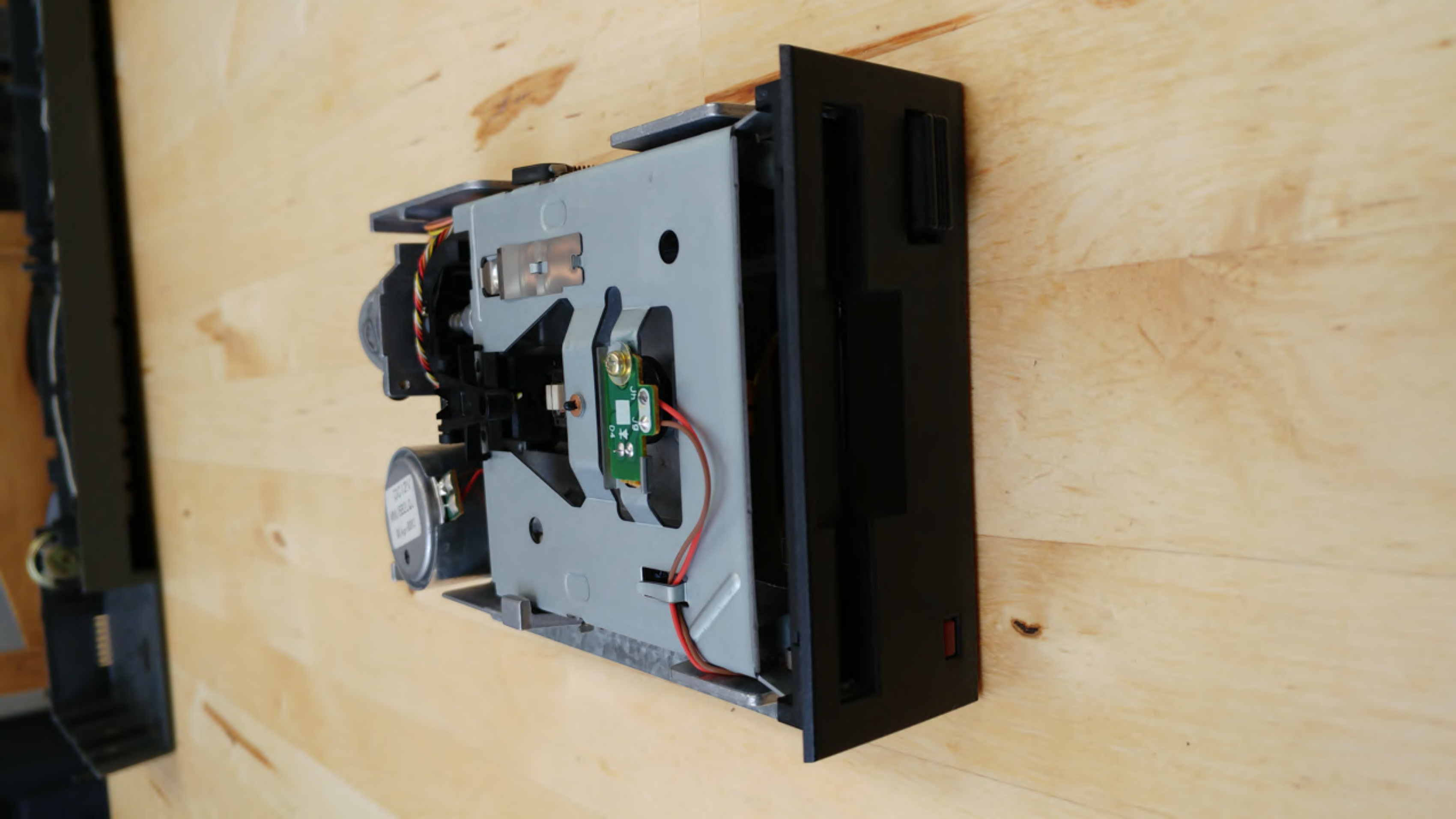




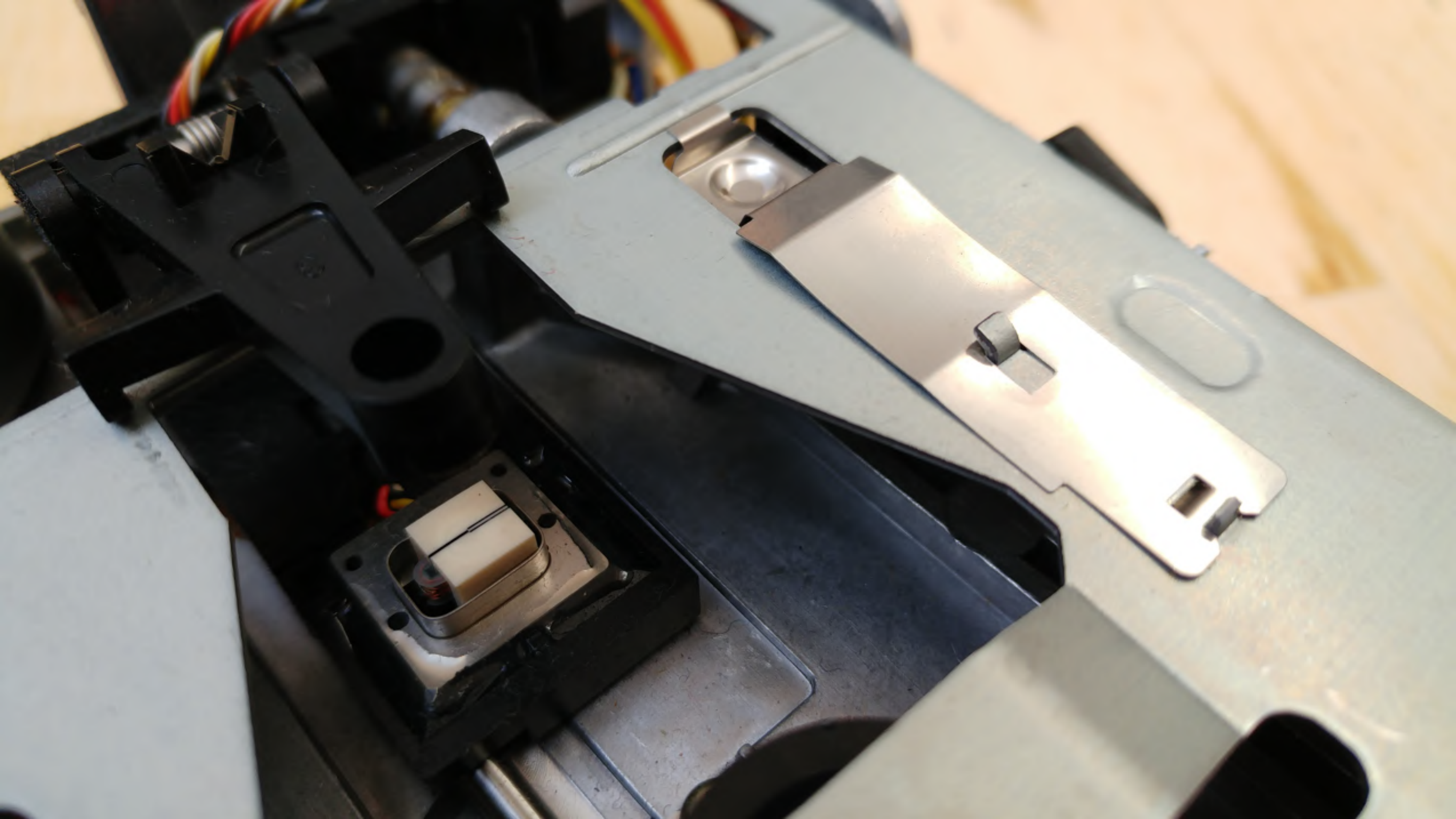


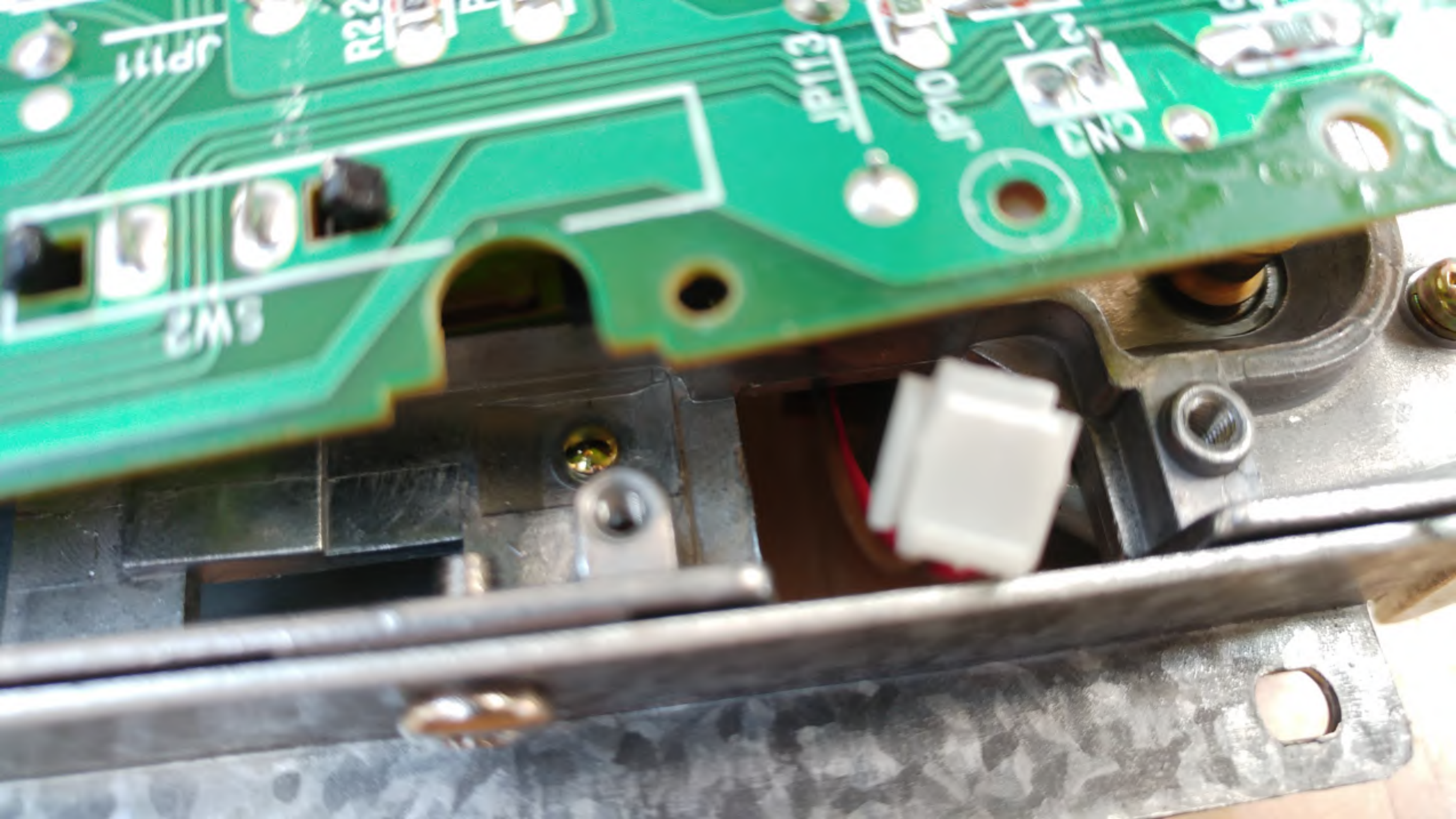
EME-158
SER. NO.
449
F8425D1

DC 12V
MMU-5B2LQJ
06Apr88N2

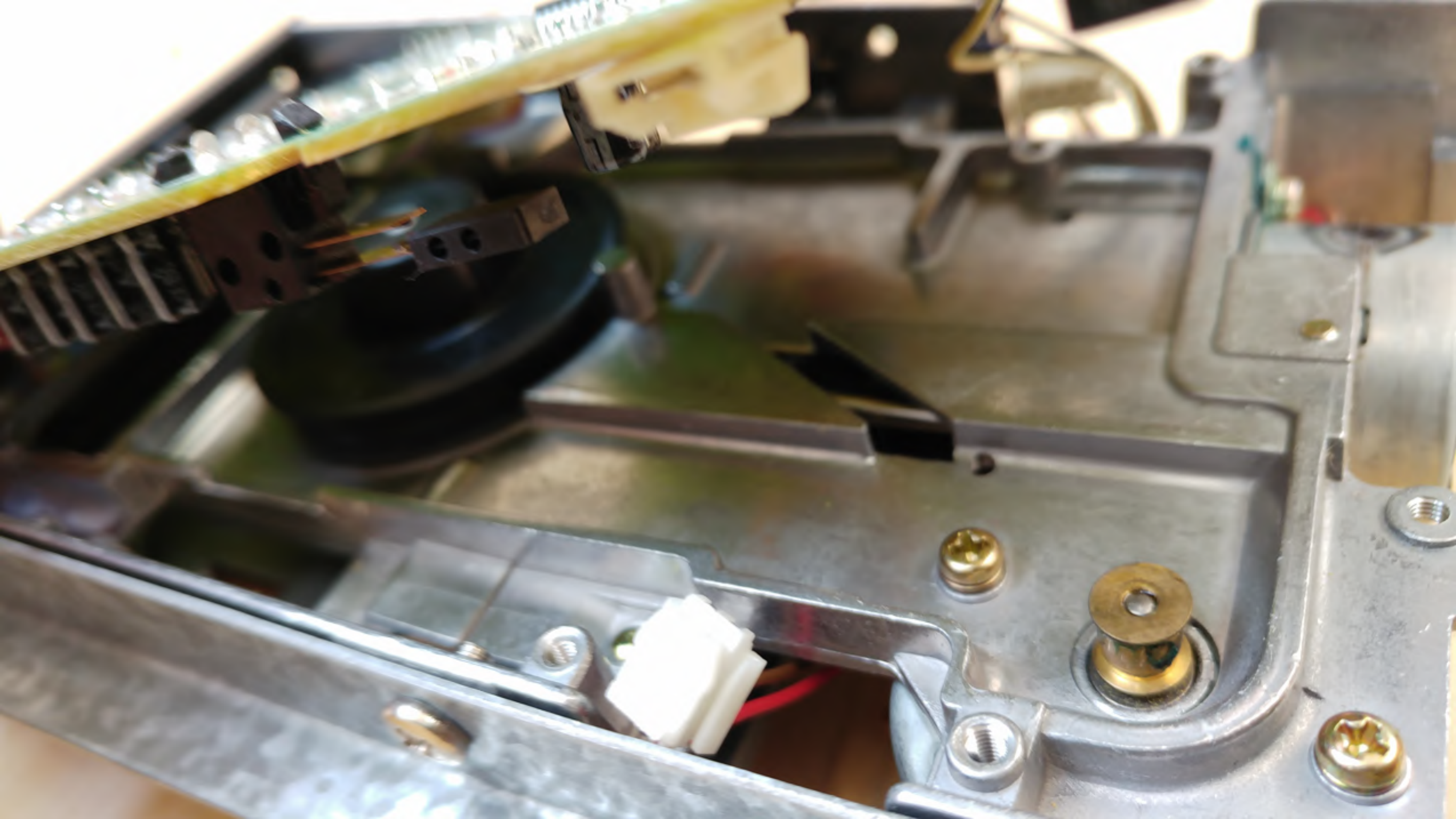


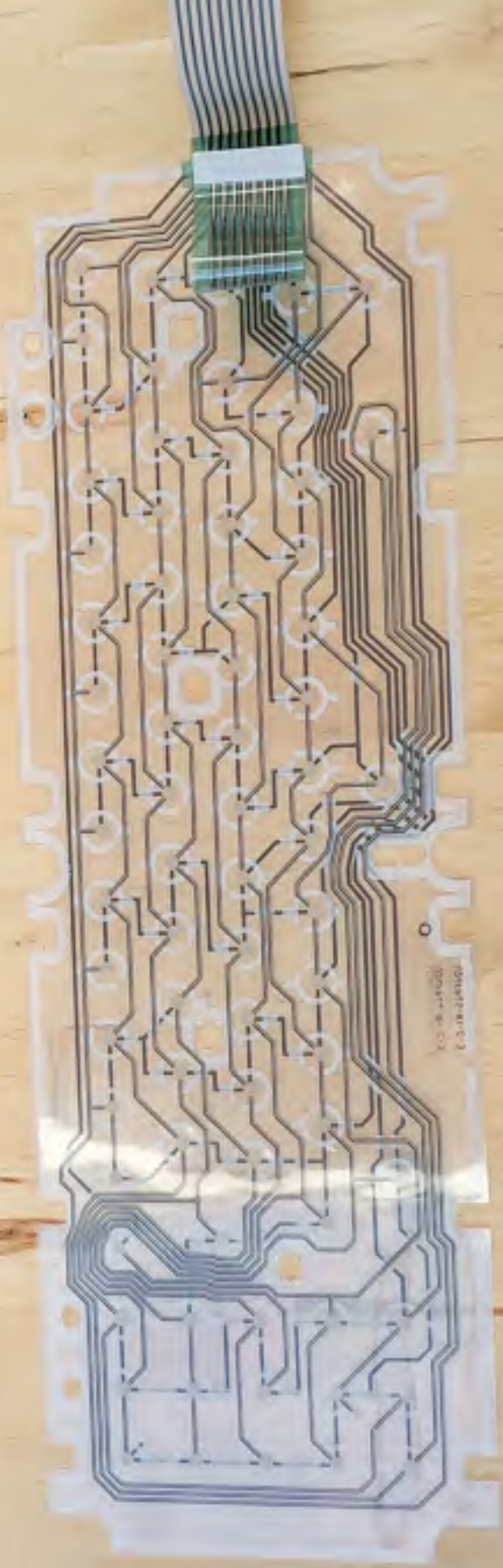












U24FP44-R1- -3
U24FP44-R1-C-3
U24FP45-R1- -3
U24FP45-R1-C-3

567890

67890



Amstrad 128K Microcomputer (f3)

©1985 Amstrad Consumer Electronics plc
and Locomotive Software Ltd.

BASIC 1.1

Ready

