

DANGER  
MAIN VOLTAGE

CAUTION-LIVE PARTS

T 2A

XPC-FR-1  
AU TV-0

PTNO. Z70215  
AUSTRIAN

MM00131  
MM00131

3 D

D

01

31

MM00131  
MM00131

10

FB401

XPC-FR-1

RV 1V-0 ▲

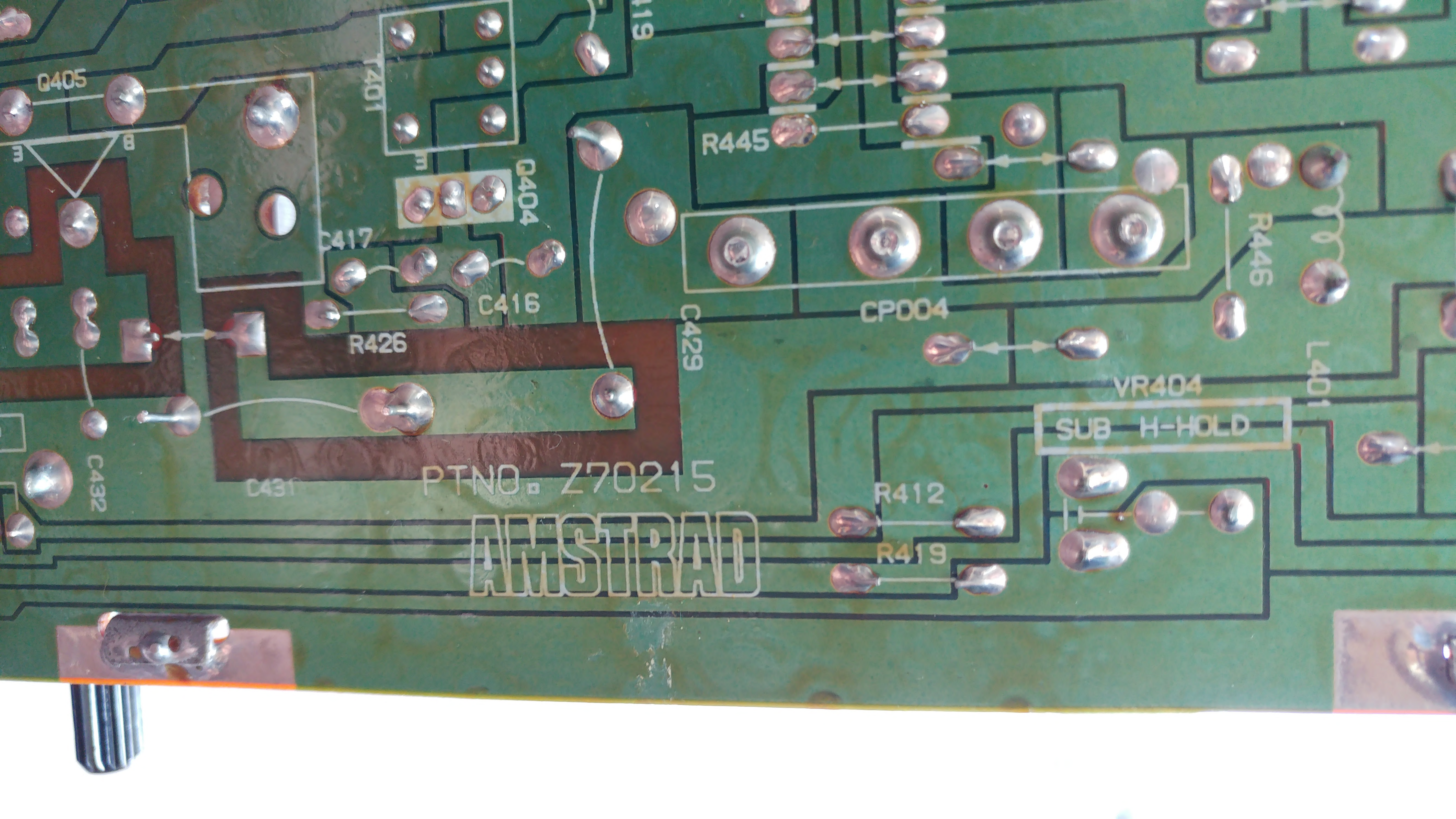
R438

VR403

H-HOLD

VR405

V-HOLD



Q405

L401

R419

R445

R445

Q404

C417

C416

CP004

R426

C429

VR404

L401

SUB H-HOLD

C432

C433

PTNO. Z70215

R412

ANSTRAD

R419

C511

C515

C513

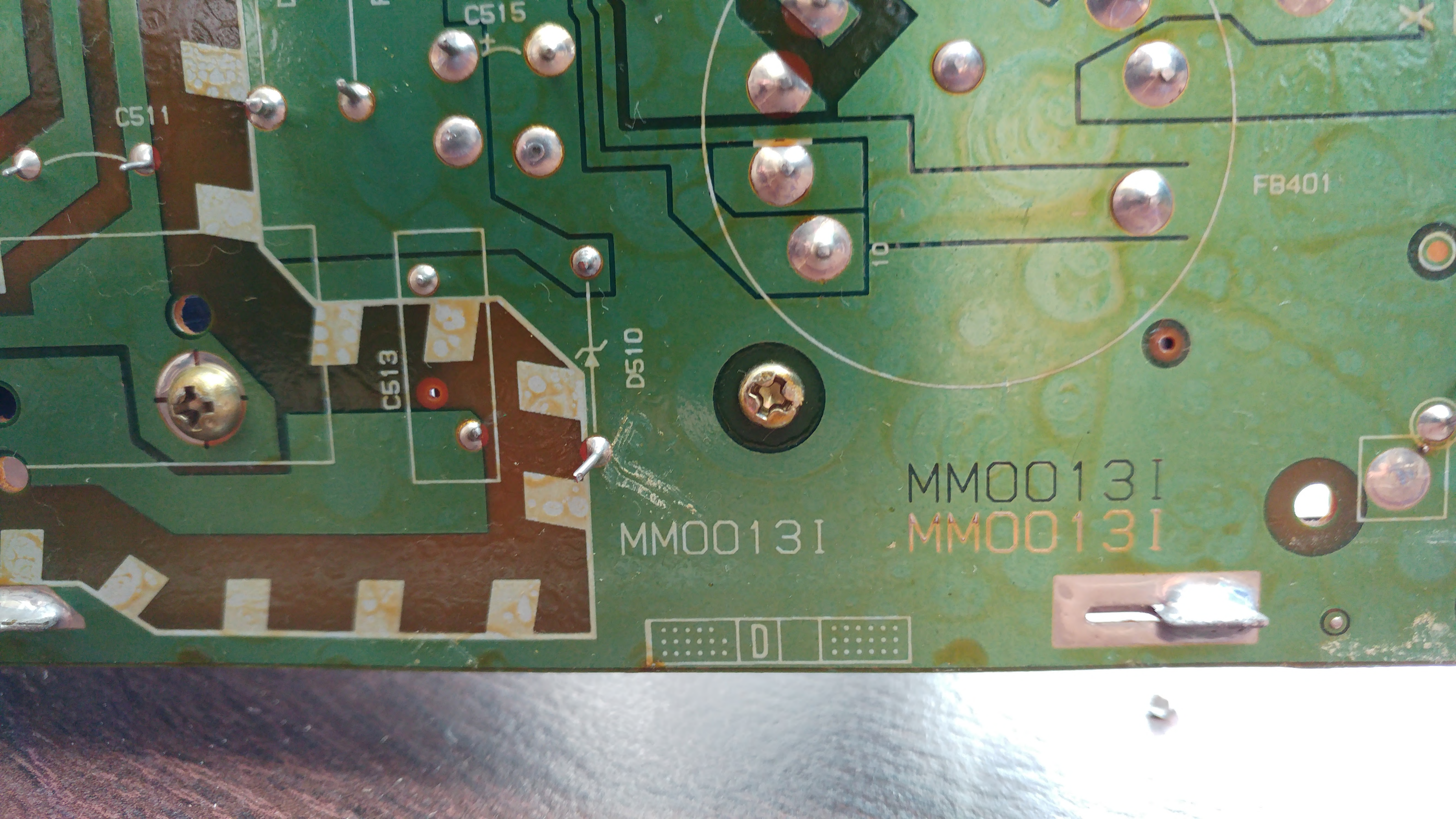
D510

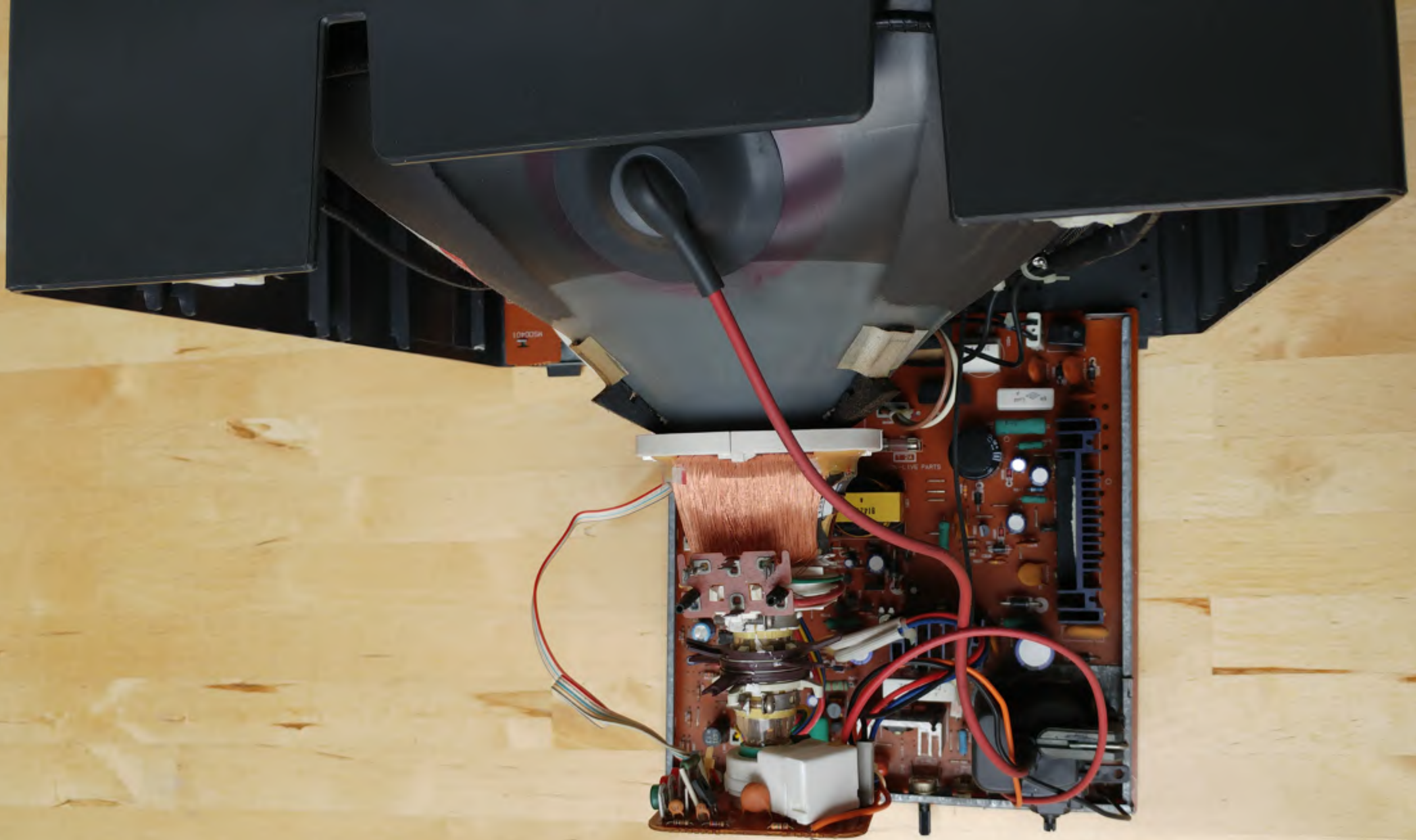
FB401

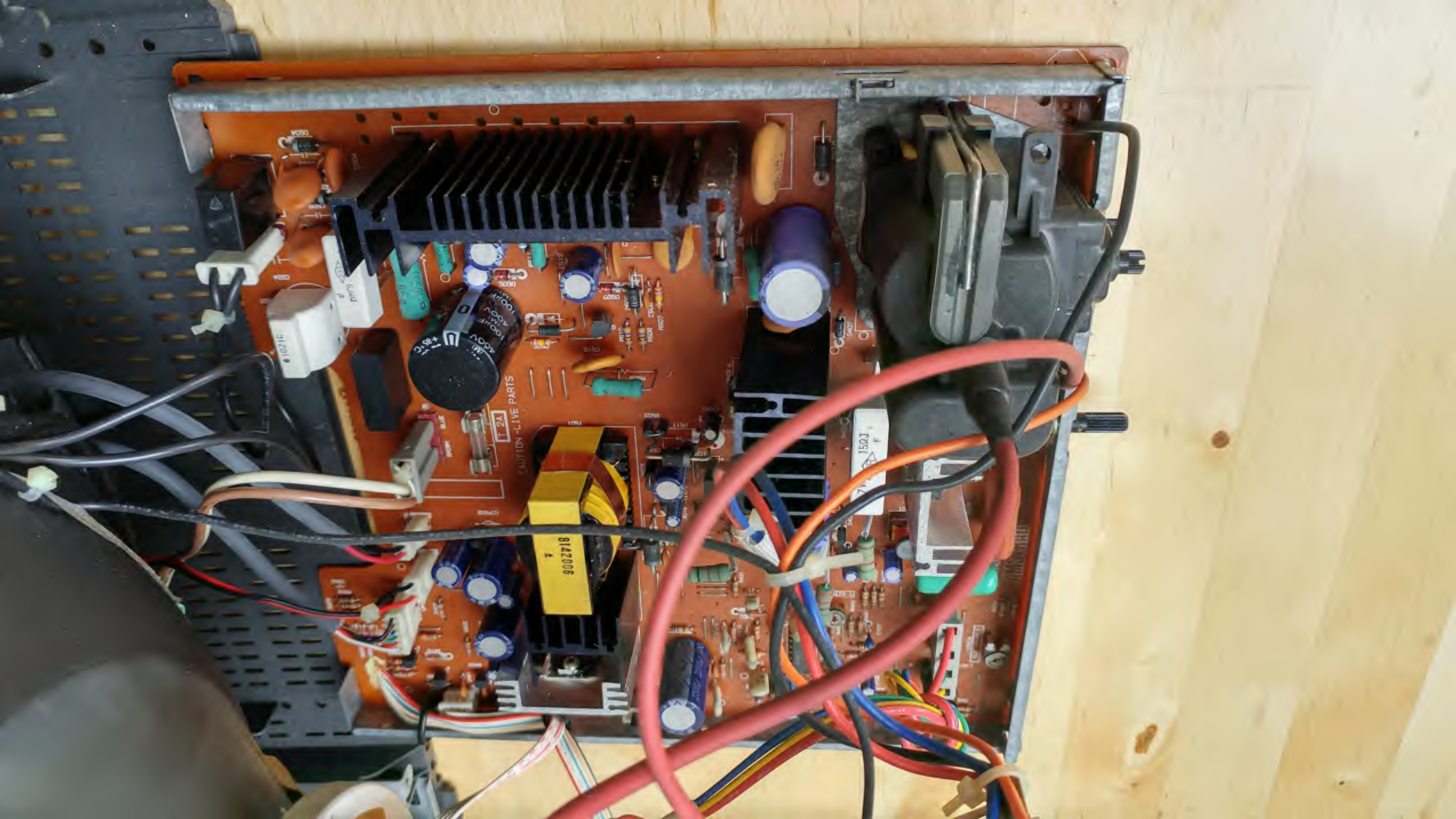
MM0013I

MM0013I  
MM0013I

..... D .....









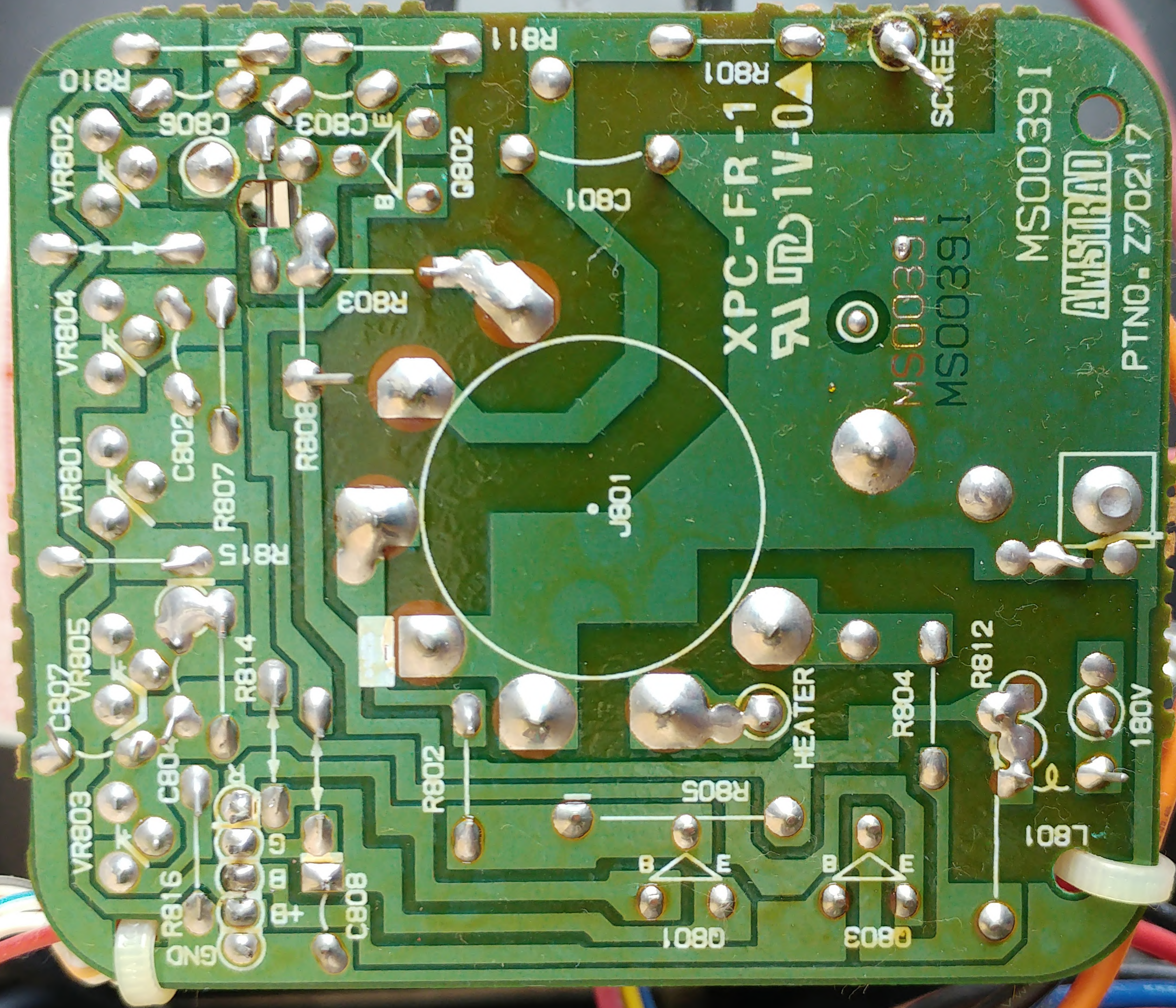
183

78602

G

ZAT8713908

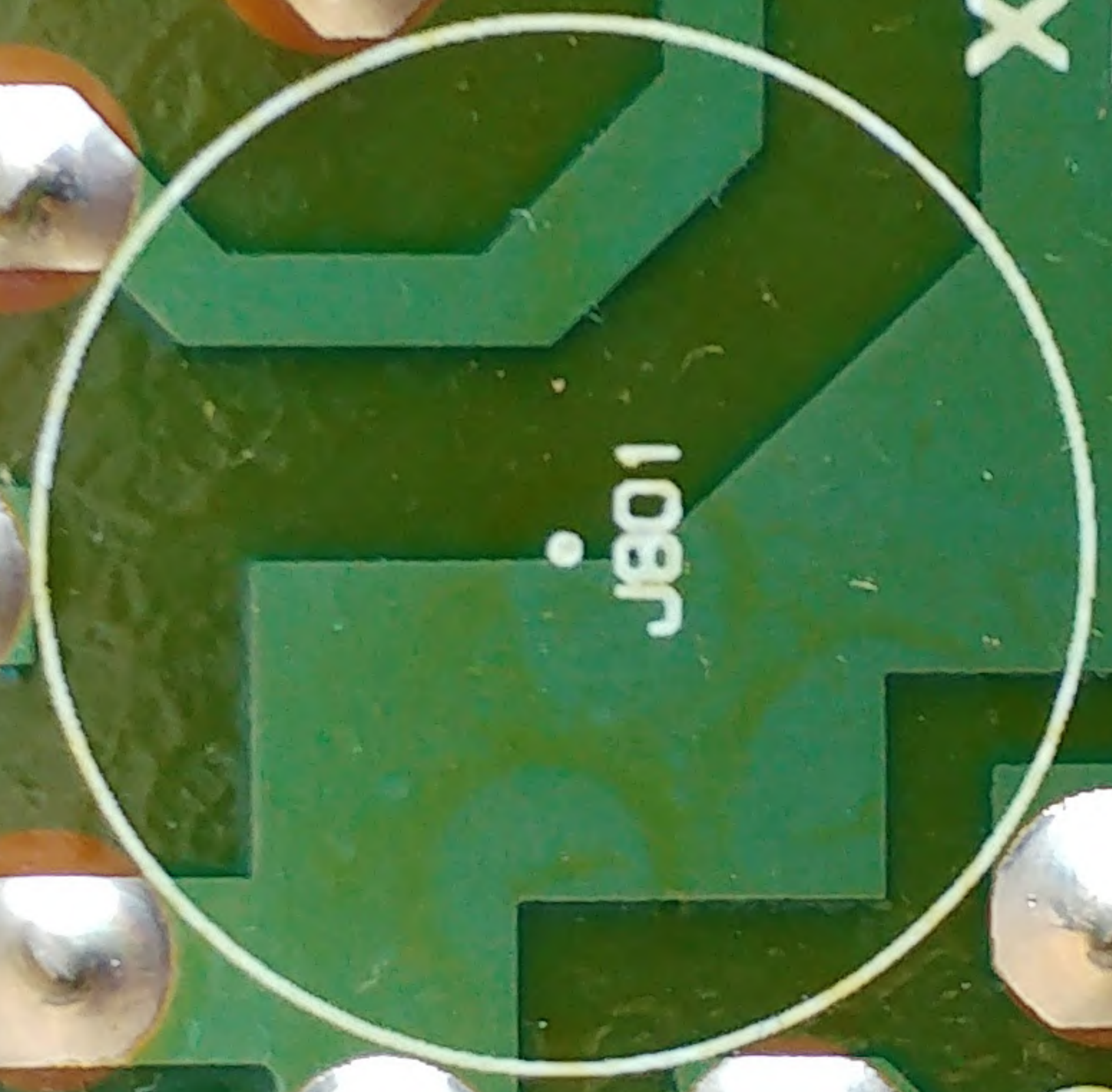




XPC-FR-1  
1V-0

MS0039I  
MS0039I

MS0039I  
AMSTRAD  
PTNO. Z70217



HEATER

180V

SCREEN

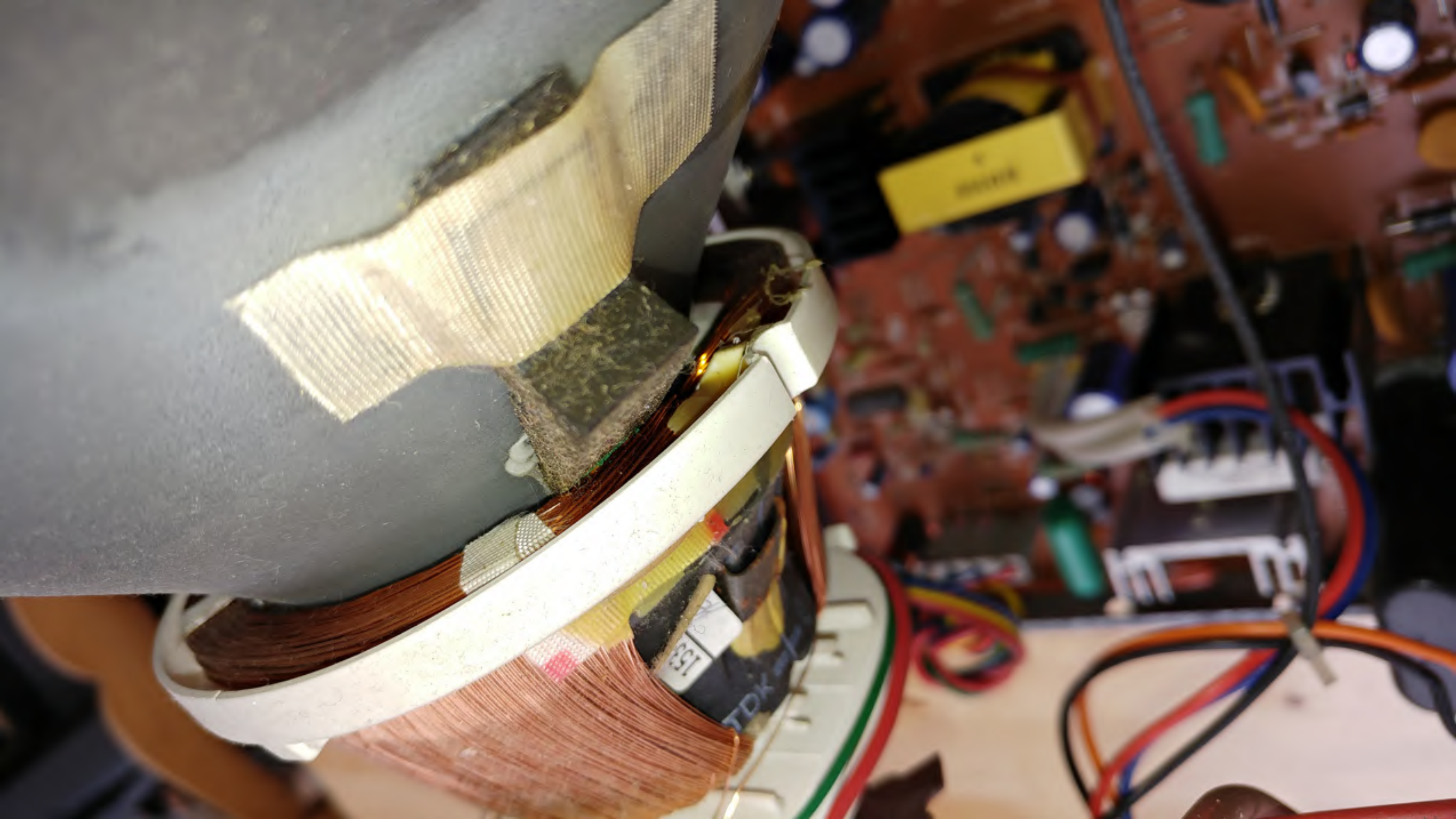
R810 VR802 C806 C803 Q802 R811 R801 C801 R803 R808 R807 R804 VR804 VR801 C802 R805 R802 J801 R804 R812 R801 180V R803 Q803 Q801 R805 R802 R804 R812 R801 180V R816 C804 VR805 VR803 C807 R814 R814 R808 R802 R802 R805 R805 HEATER R804 R812 R801 180V

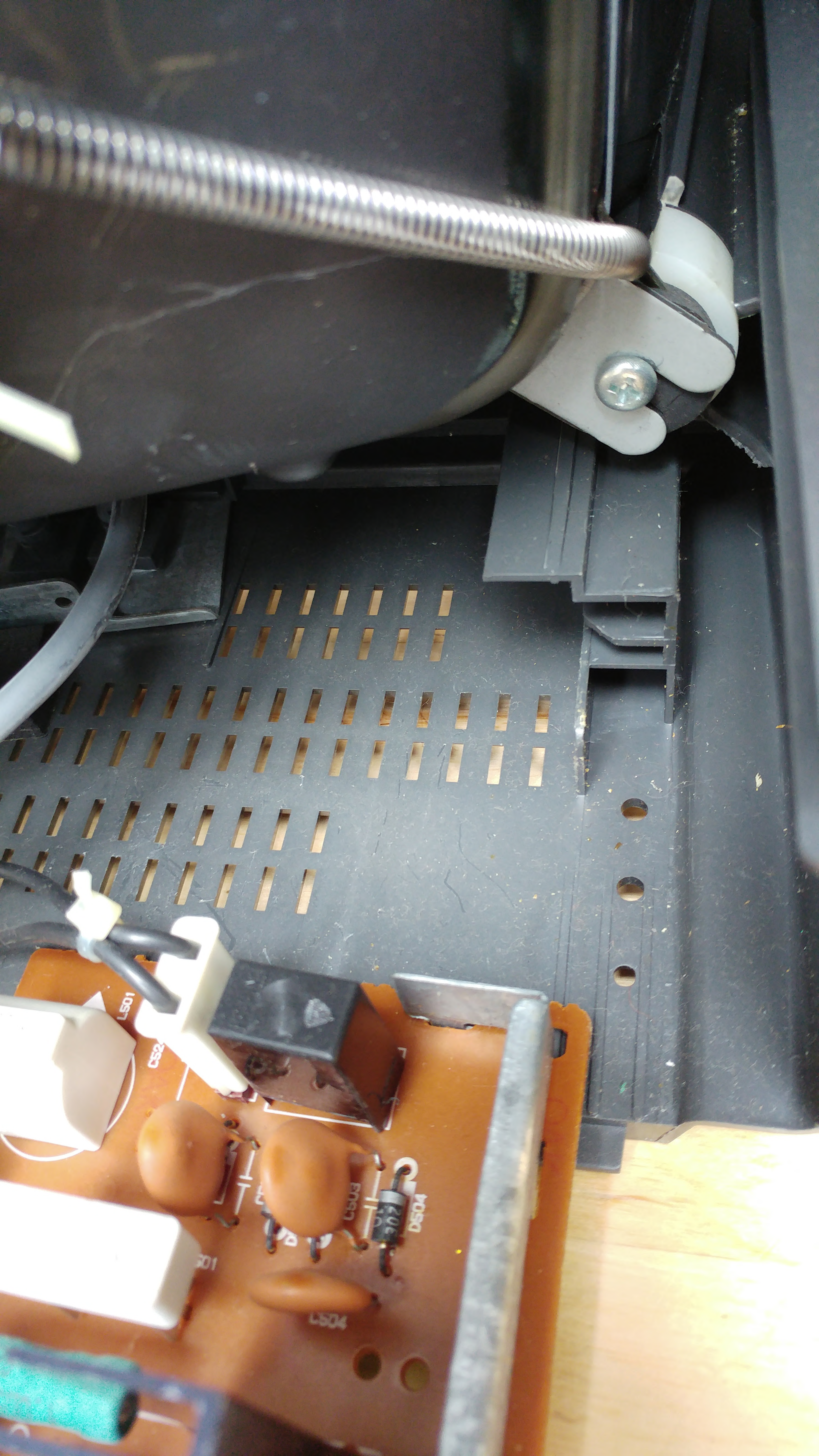
153-034M

Head

SOC  
BEAMS

15





MS0040 I

AMSTRAD

PTNO. Z70216

4321

MS001B

**ORION**

**370LYB22**



BSI CERTIFICATE NO. 6616

No.

80500550

Eigensichere Kathodenstrahlröhre nach Anlage III Röntgenverordnung.

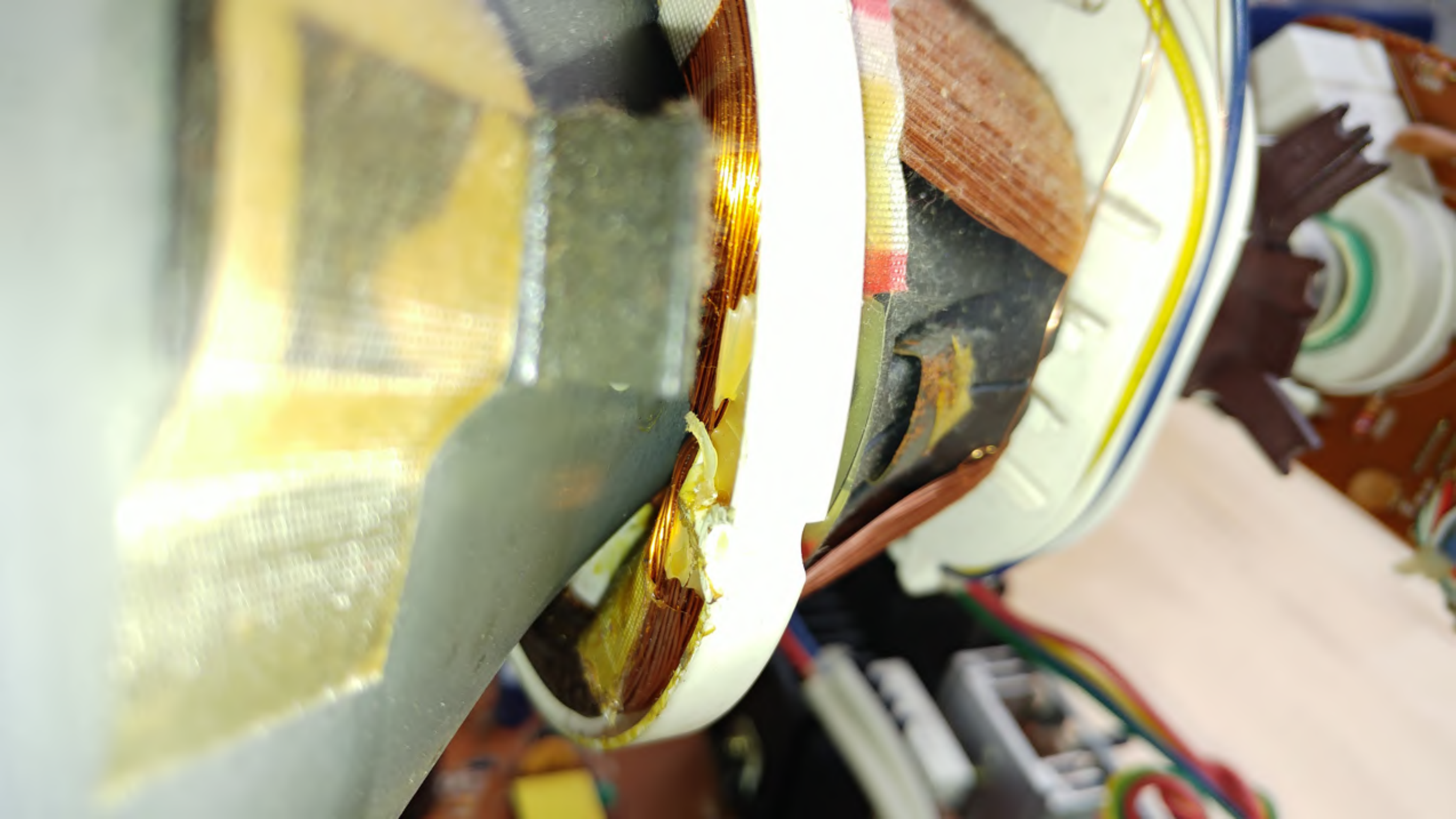
**CAUTION: HIGH-VACUUM PICTURE TUBE IS DANGEROUS TO HANDLE. REFER SERVICING TO QUALIFIED SERVICE PERSONNEL.**

**X-RAY WARNING :** When picture tubes are operated at very high voltage and when personal exposure is prolonged at close range, special shielding precautions against x-ray radiation may be needed.

**WARNING :** THIS PICTURE TUBE EMPLOYS INTEGRAL IMPLOSION PROTECTION. REPLACE WITH A TUBE OF THE SAME TYPE NUMBER FOR CONTINUED SAFETY.

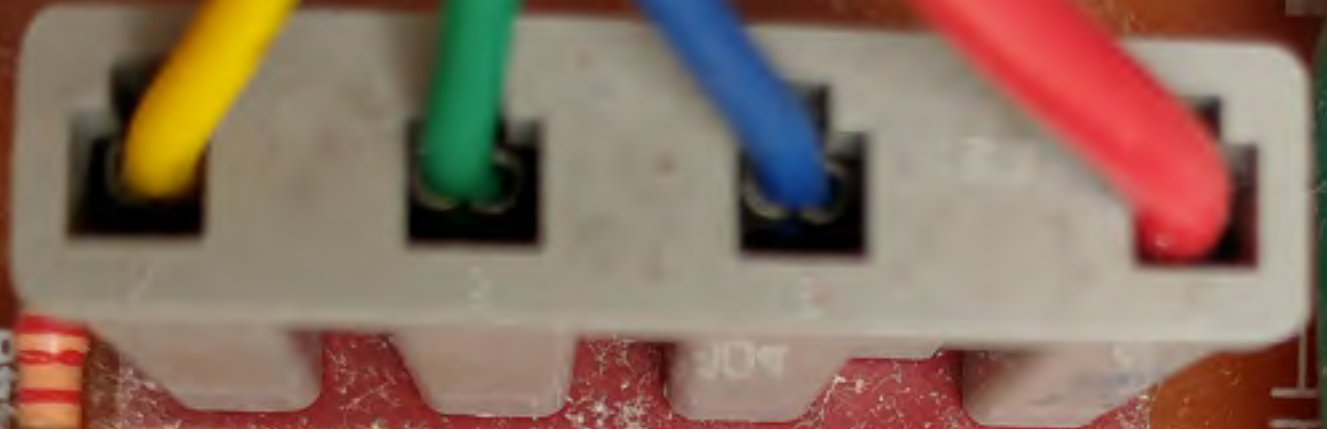
**AVERTISSEMENT :** CE TUBE CATHODIQUE EMPLOIE UNE PROTECTION D'IMPLOSION INTÉGRALE. REMPLACER PAR UN TUBE DU MÊME TYPE NUMÉRO POUR LA SÛRETÉ CONTINUE.

**CERTIFIED BY BRITISH STANDARDS INSTITUTION FOR IMPLOSION SAFETY TO B.S.415: 1979 CLAUSE 18**



PTNO. Z70215  
**AMSTRAD**

VR404  
SUB H-HOLD



CP004



L401



R421



R412  
R419



C429

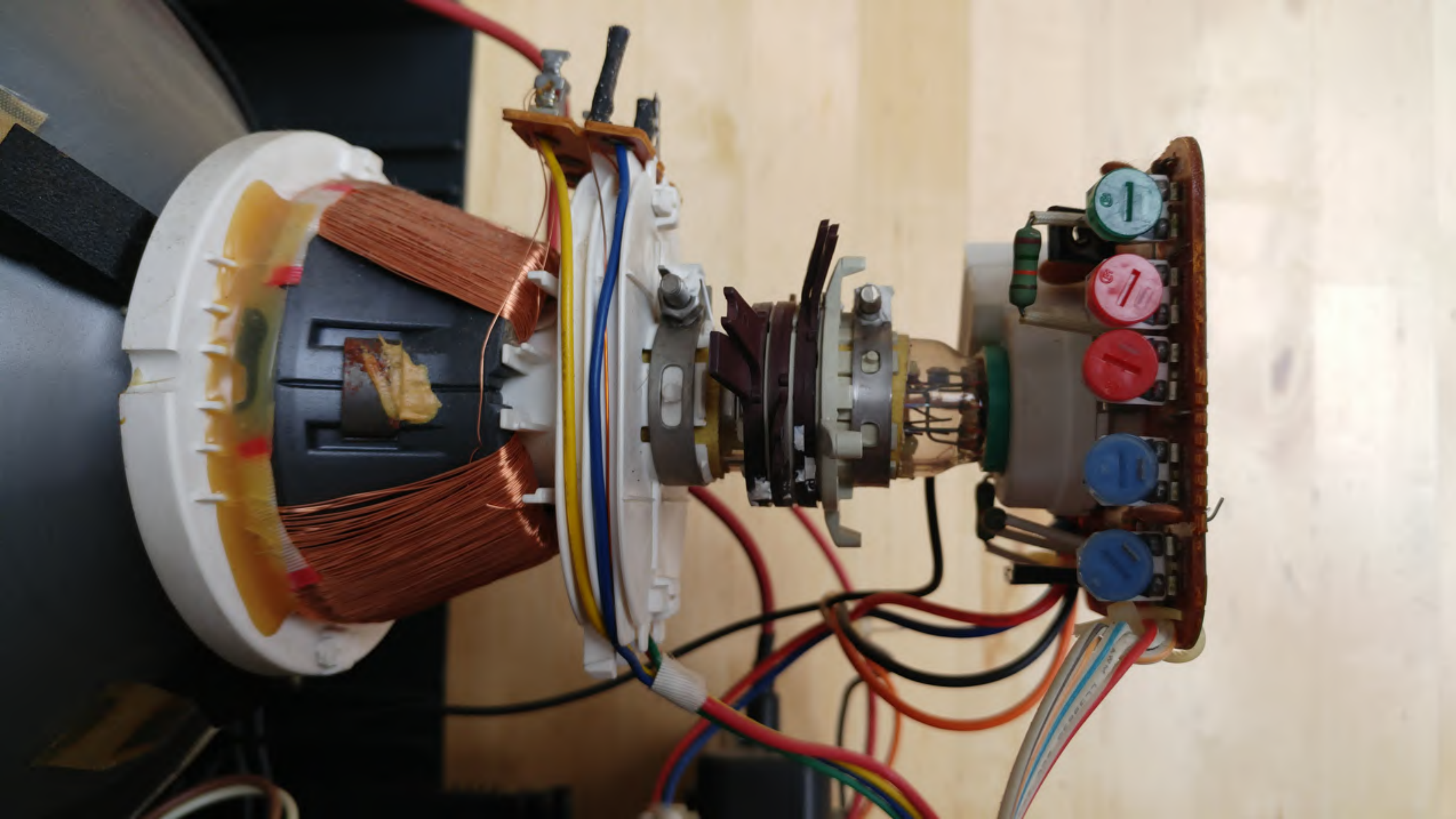
C419

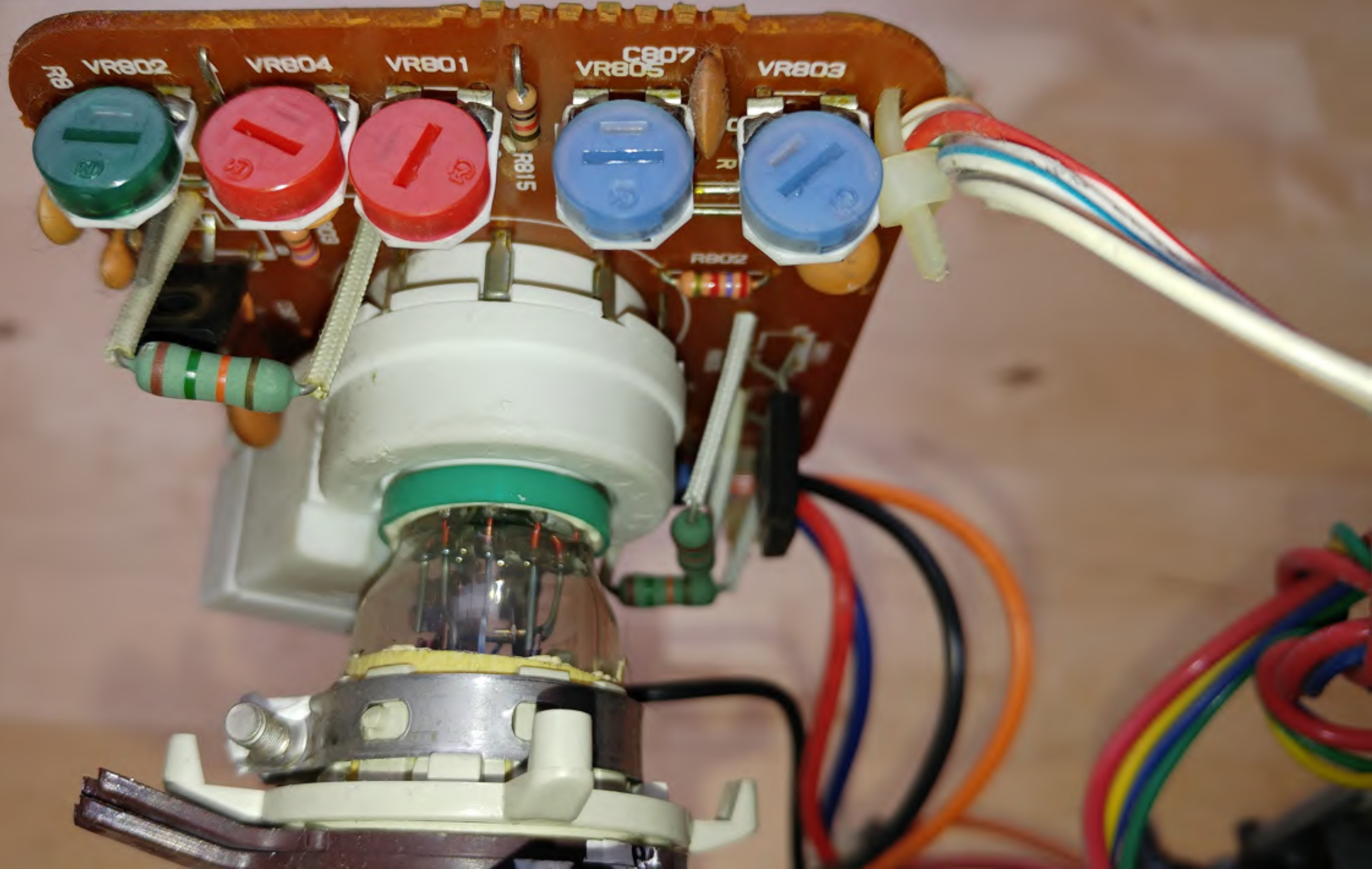
R429



TTT







R89

VR802

VR804

VR801

C807  
VR805

VR803

R815

R802



brightness







ND. CO. LTD

# AMSTRAD

COURANT A HAUTE TENSION

DEBRANCHER LES PRINCIPALES PRISES AVANT DE REVISSER  
QUOIQUE CE SOIT ET DE RETIRER LE PANNEAU ARRIERE.

DEBRANCHER APRES UTILISATION

COURANT: 220-240V~50Hz

DC FICHE DE SORTIE: 5V 1.7 AMP

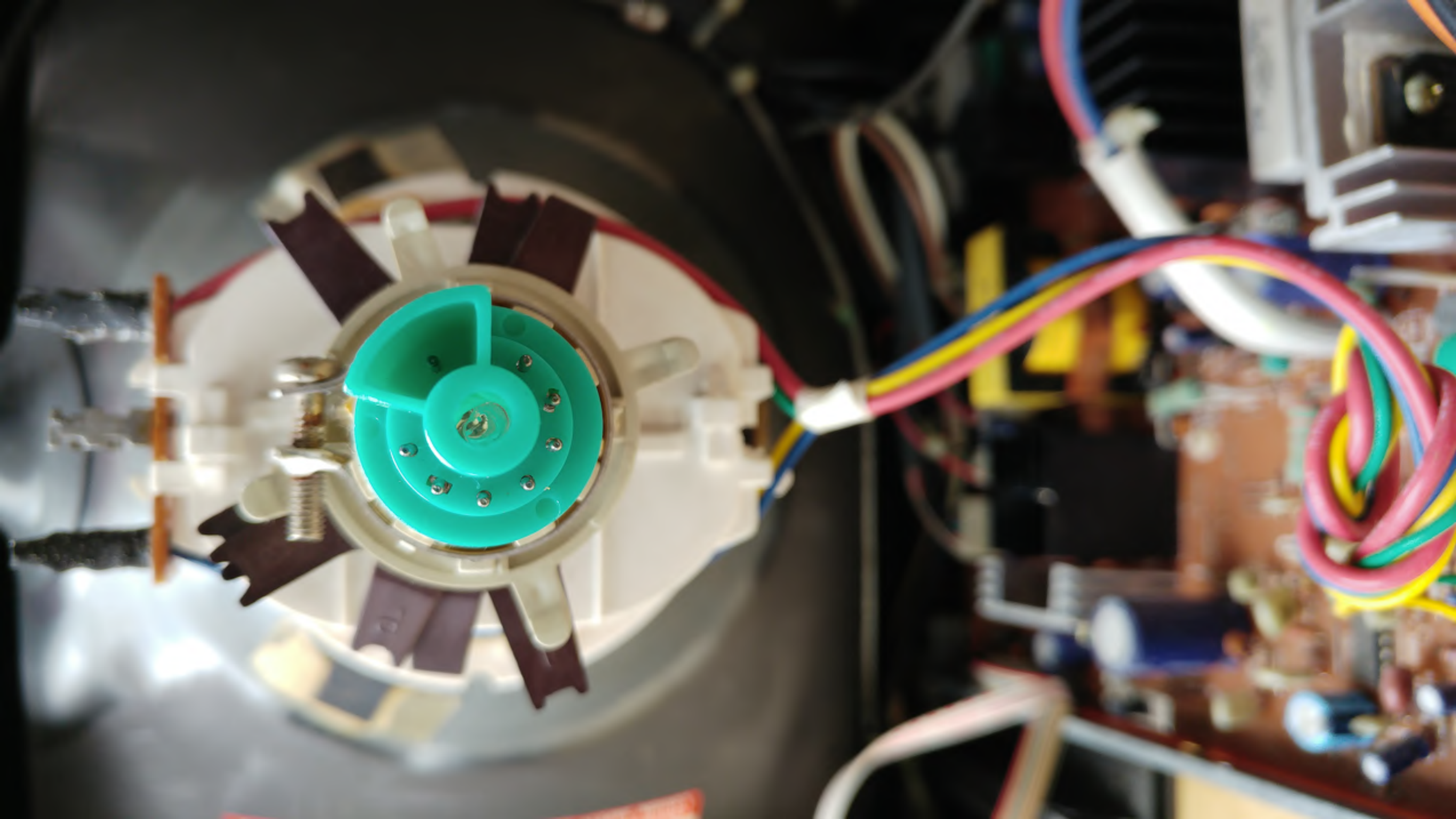
DC FICHE DE SORTIE: 12V 0.4 AMP

AMSTRAD CONSUMER ELECTRONICS PLC MODELE CTM 644-2

FABRIQUE EN COREE

NO. DE SERIE

541-8726441







**AMSTRAD**

COURANT A HAUTE TENSION  
DEBRANCHER LES PRINCIPALES PRISES AVANT DE REVISSER  
QUOIQUE CE SOIT ET DE RETIRER LE PANNEAU ARRIERE.  
DEBRANCHER APRES UTILISATION  
COURANT: 220-240V~ 50 Hz  
DC FICHE DE SORTIE: 5V 1.7 AMP  
DC FICHE DE SORTIE: 12V 0.4 AMP  
AMSTRAD CONSUMER ELECTRONICS PLC MODELE CTM 644-2  
FABRIQUE EN COREE

NO. DE SERIE

541-8726441

VHOLD H.HOLD



D  
MFR'S  
VERSION

CS

V.HOLD H.HOLD



















**AMSTRAD**

CTM 644  
MONITEUR COULEUR



12V DC



ALIMENTATION













ETM 844

8813

