

ACTION...

REPLAY

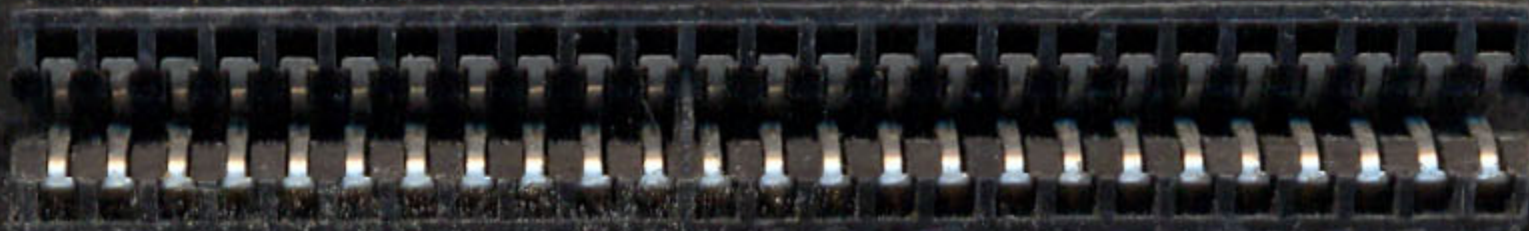
AMIX

Freeze

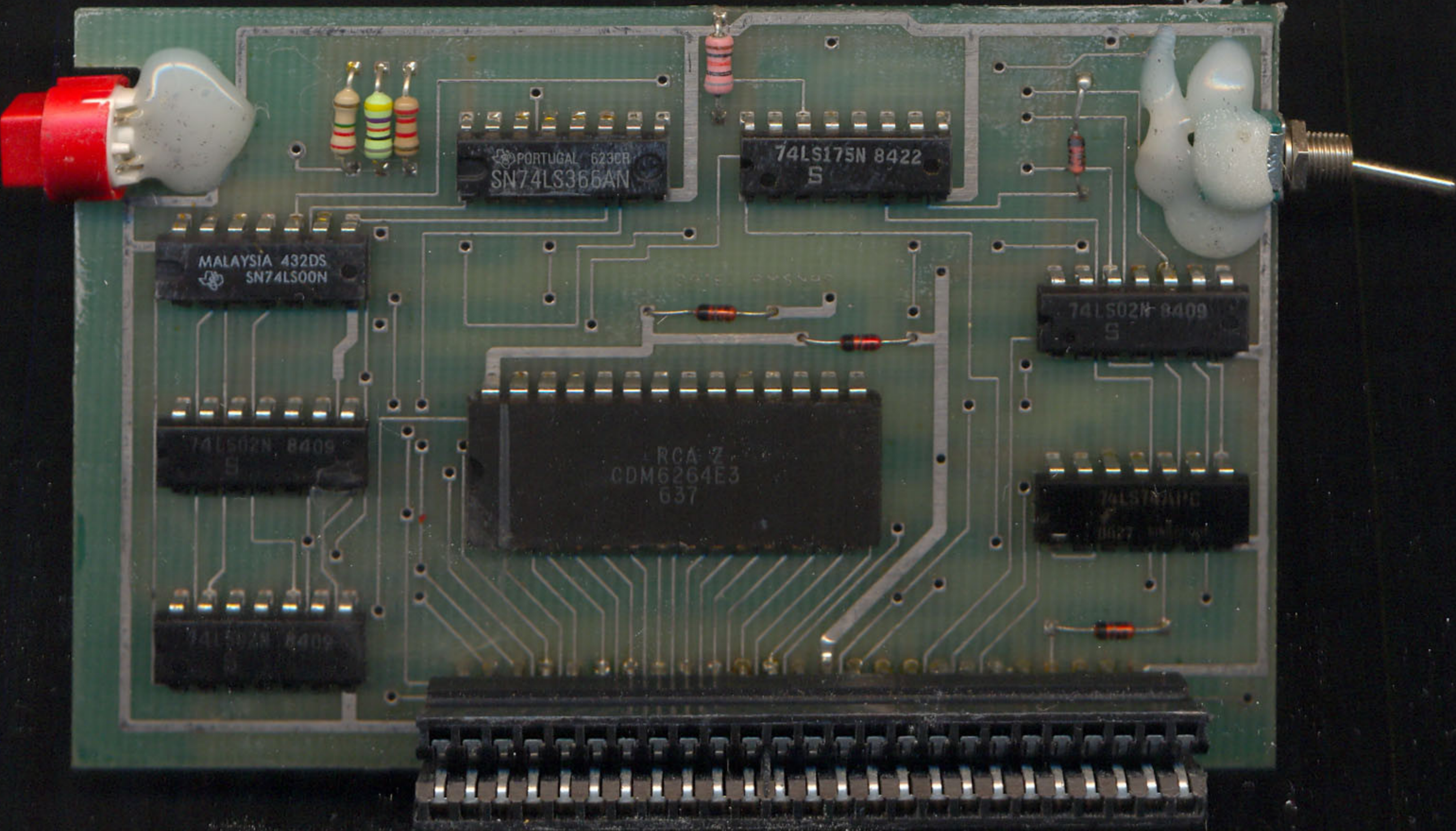
LOAD

SAVE

DATEL
ELECTRONICS







PORTUGAL 623CB
SN74LS366AN

74LS175N 8422
S

MALAYSIA 432DS
SN74LS00N

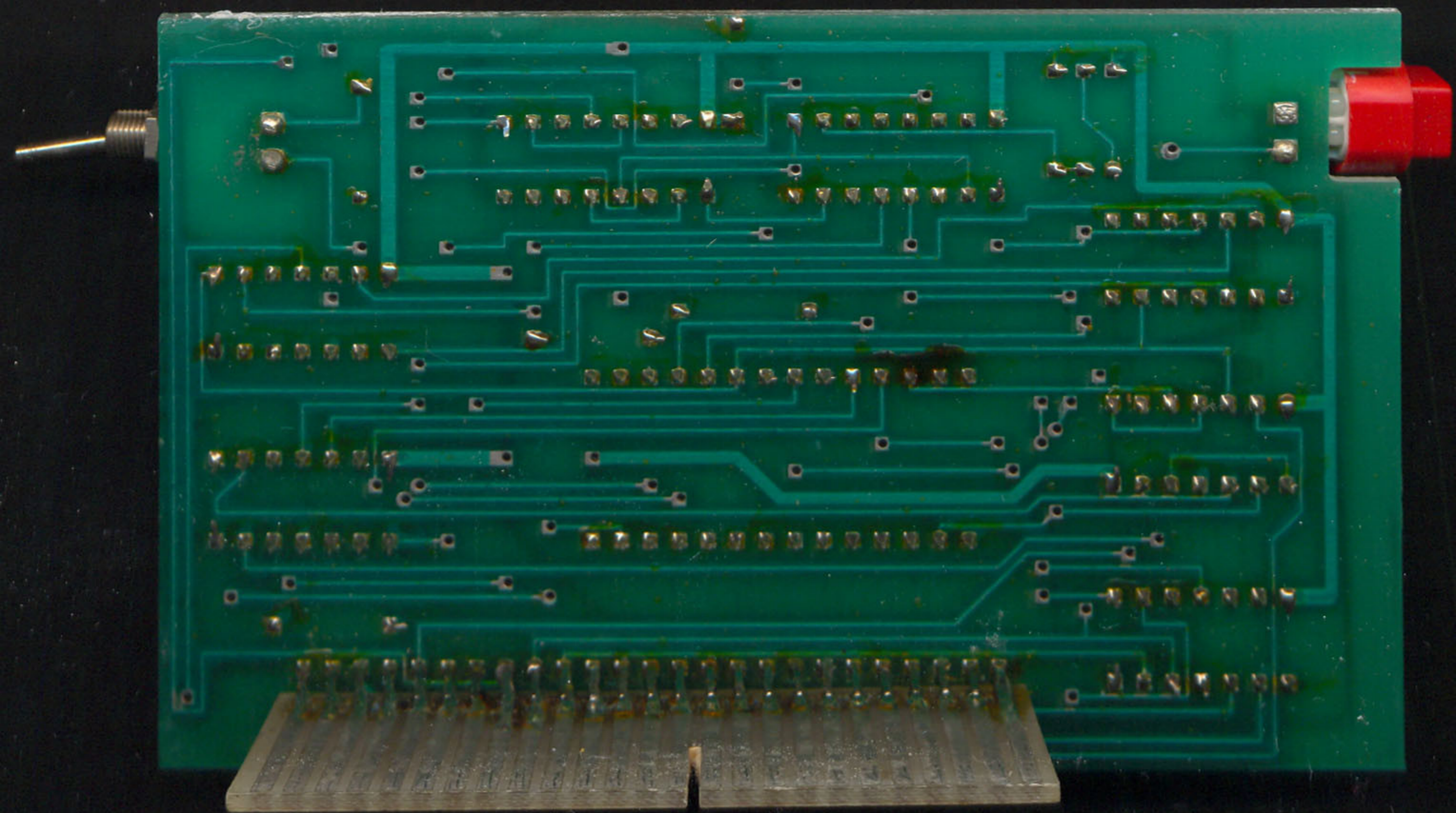
74LS02N 8409
S

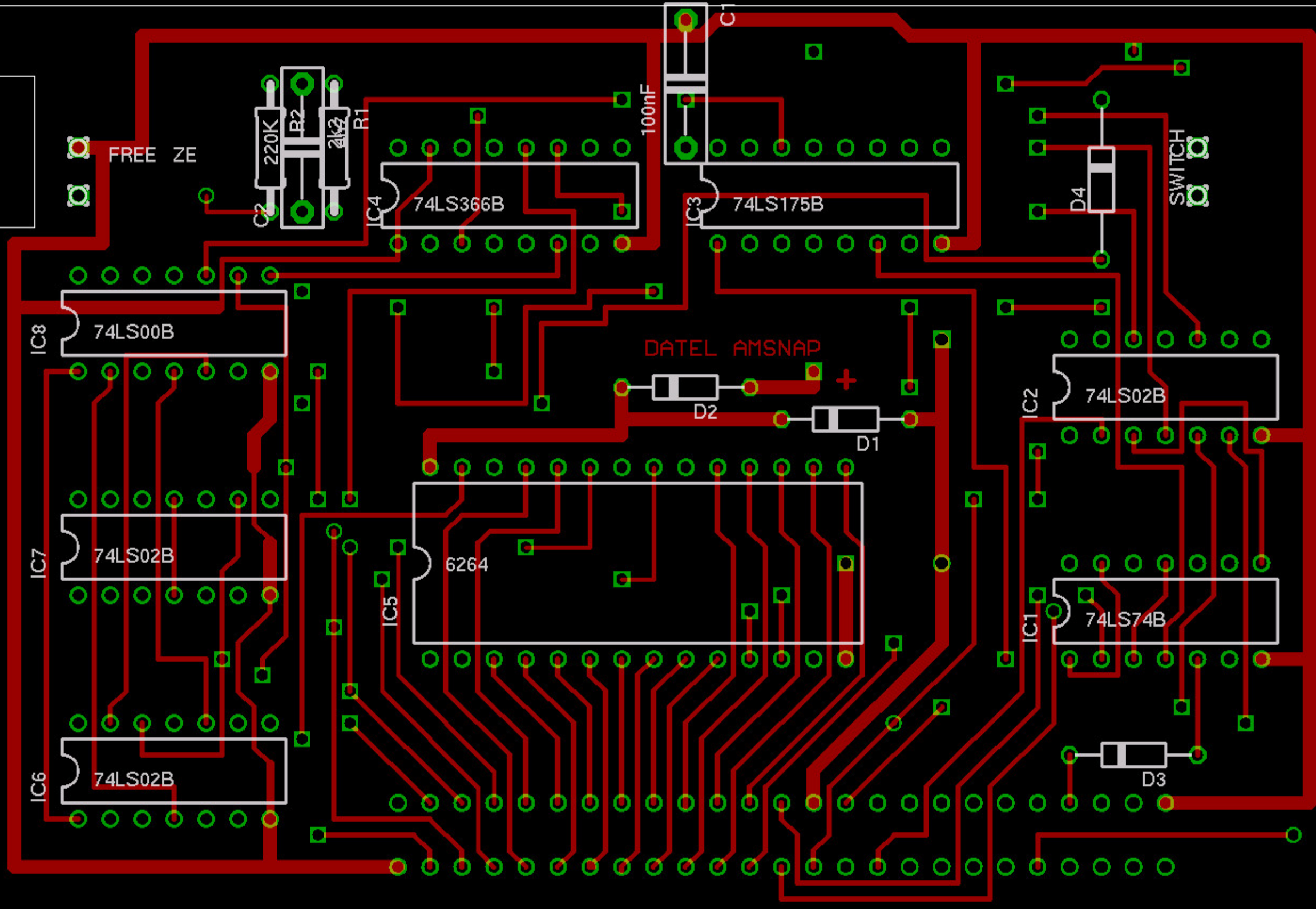
RCA Z
CDM6264E3
637

74LS02N 8409
S

74LS175N 8422
S

74LS175N 8422
S





FREE ZE

220K
R2
2k2
R1

100nF

74LS366B

74LS175B

D4

SWITCH

IC8
74LS00B

DATEL AMSNAP

D2

D1

IC2
74LS02B

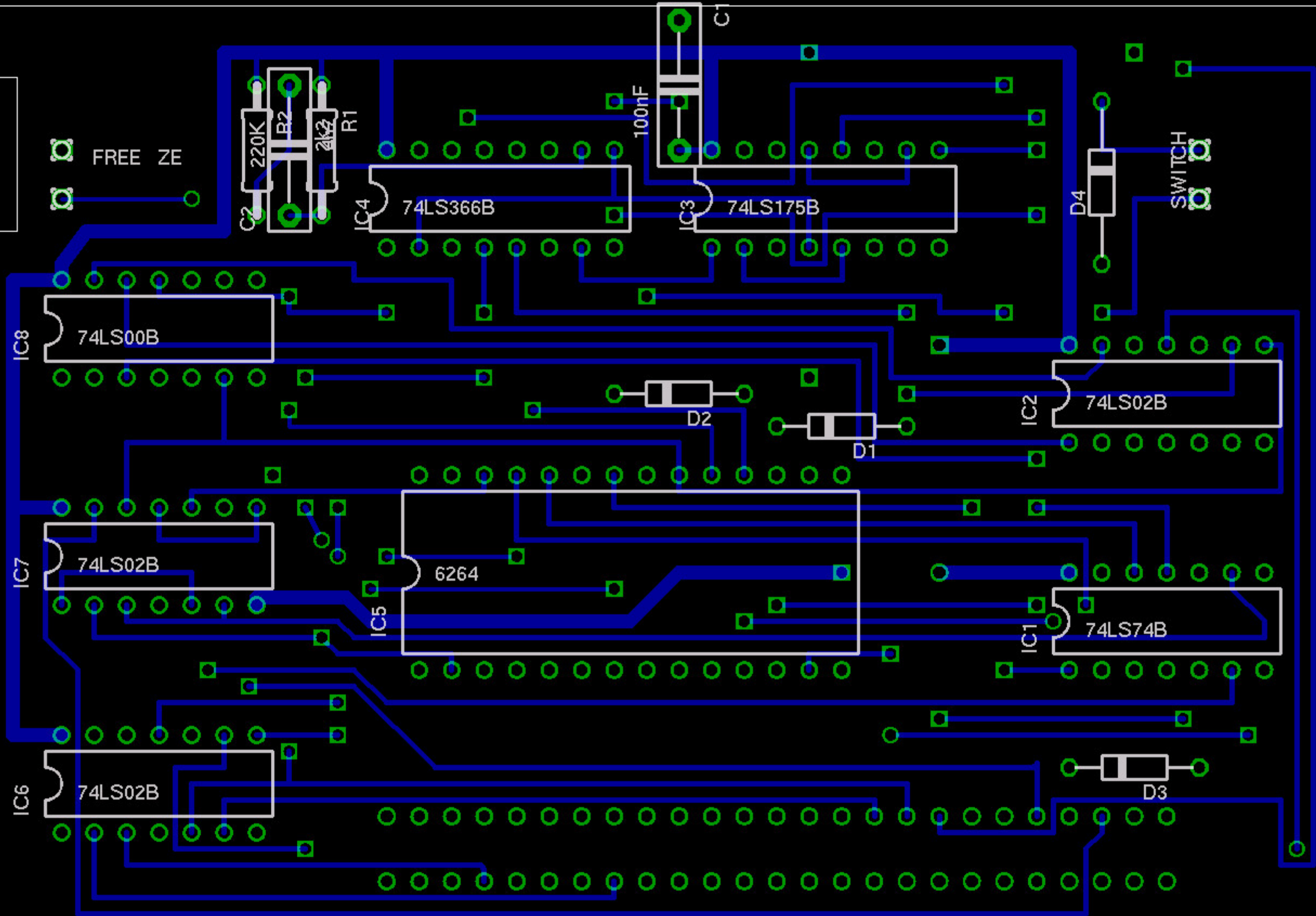
IC7
74LS02B

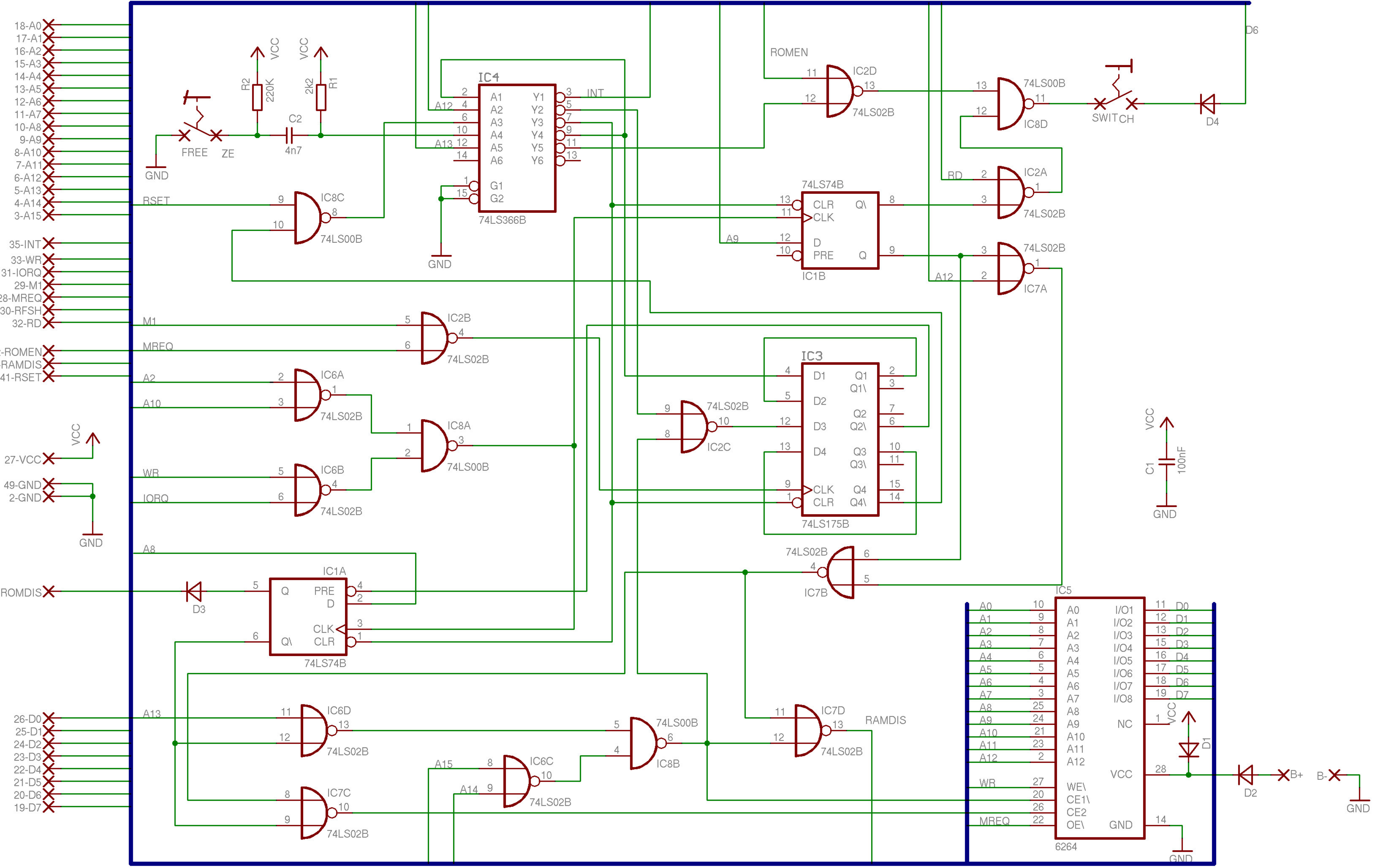
6264

IC1
74LS74B

IC6
74LS02B

D3





- 18-A0
- 17-A1
- 16-A2
- 15-A3
- 14-A4
- 13-A5
- 12-A6
- 11-A7
- 10-A8
- 9-A9
- 8-A10
- 7-A11
- 6-A12
- 5-A13
- 4-A14
- 3-A15

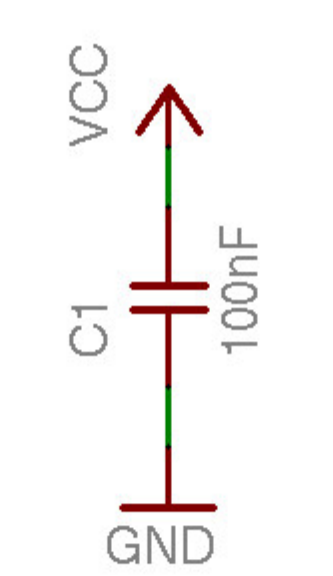
- 35-INT
- 33-WR
- 31-IORQ
- 29-M1
- 28-MREQ
- 30-RFSH
- 32-RD

- ROMEN
- RAMDIS
- 41-RSET

- 27-VCC
- 49-GND
- 2-GND

- ROMDIS

- 26-D0
- 25-D1
- 24-D2
- 23-D3
- 22-D4
- 21-D5
- 20-D6
- 19-D7



IC5		6264	
A0	10	A0	I/O1
A1	9	A1	I/O2
A2	8	A2	I/O3
A3	7	A3	I/O4
A4	6	A4	I/O5
A5	5	A5	I/O6
A6	4	A6	I/O7
A7	3	A7	I/O8
A8	25	A8	NC
A9	24	A9	VCC
A10	21	A10	WE\
A11	23	A11	CE1\
A12	2	A12	CE2
WR	27	WR	OE\
MREQ	26	MREQ	GND
			11 D0
			12 D1
			13 D2
			15 D3
			16 D4
			17 D5
			18 D6
			19 D7
			1 VCC
			28 D\
			14 GND

