

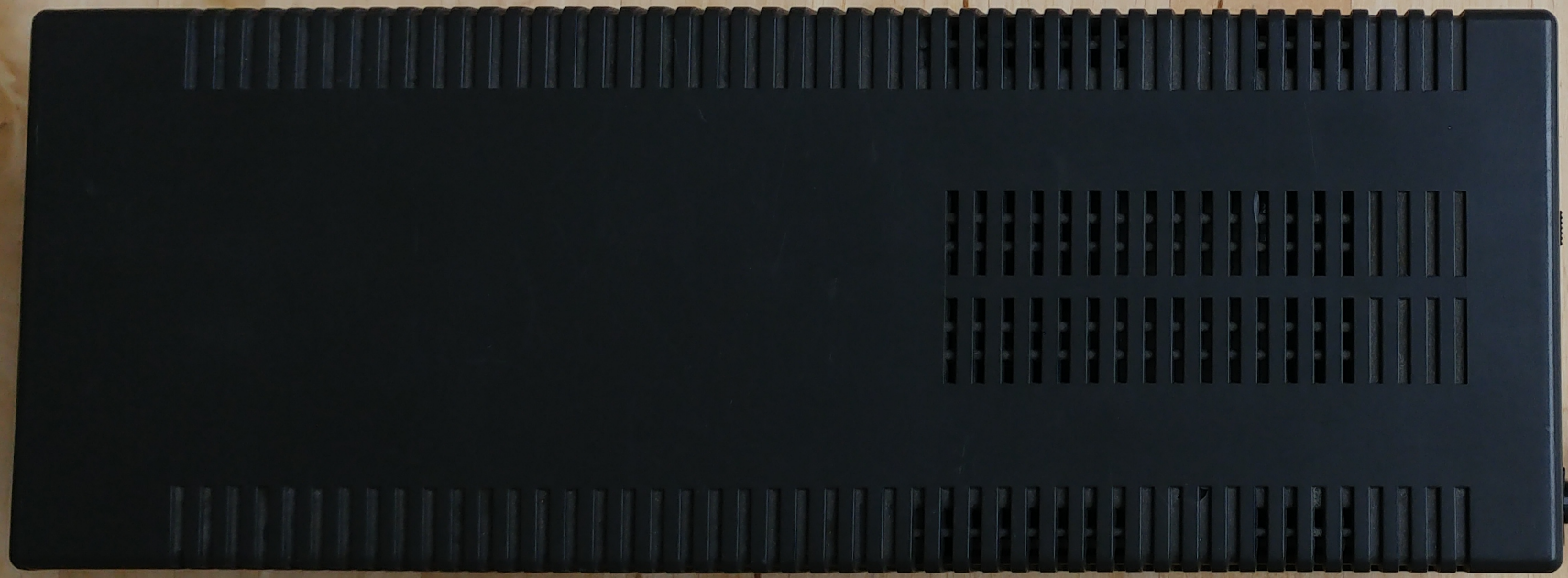






AMSTRAD







AMSTRAD

MODEL DDL-1
DISCONNECT FROM MAINS
SUPPLY WHEN NOT IN USE.
MAINS SUPPLY 220-240V ~
THIS UNIT COMPLIES WITH
EEC DIRECTIVE 82/499/EEC
ON RFI
WARNING-LIVE PARTS INSIDE
DO NOT REMOVE ANY SCREWS.
AMSTRAD PLC.

MADE IN KOREA
SERIAL NO **561-0124542**



AMSTRAD

MODEL DDI-1
DISCONNECT FROM MAINS
SUPPLY WHEN NOT IN USE.
MAINS SUPPLY: 220-240V ~
50Hz.

THIS UNIT COMPLIES WITH
EEC DIRECTIVE 82/499/EEC
ON RFI.

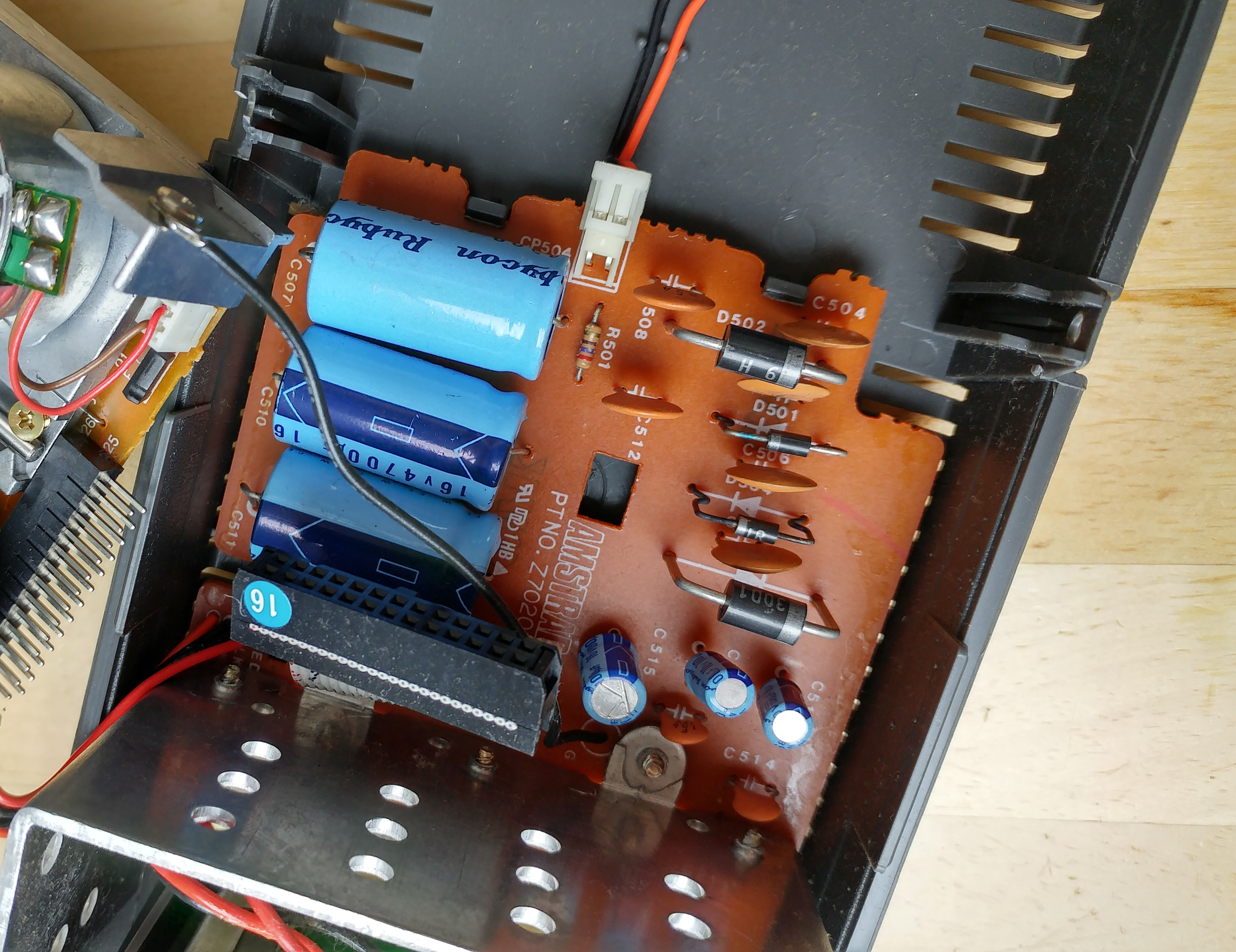
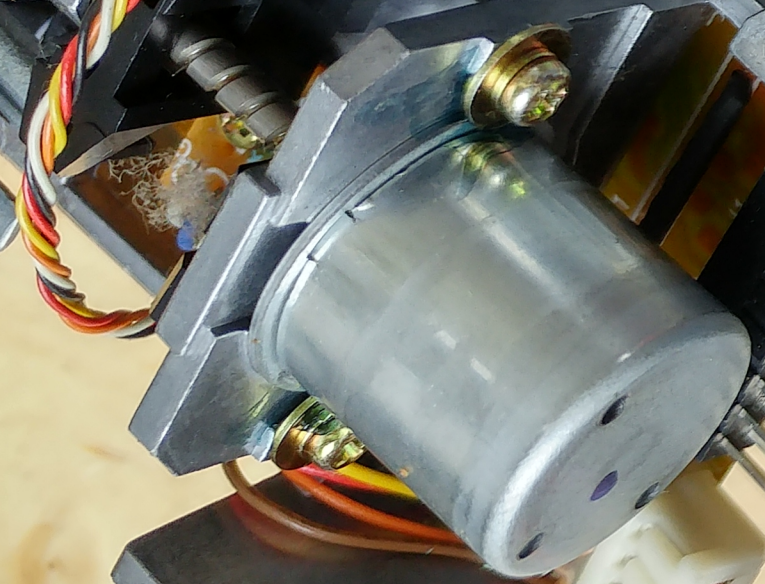
WARNING-LIVE PARTS INSIDE.
DO NOT REMOVE ANY SCREWS.
AMSTRAD PLC.

MADE IN KOREA

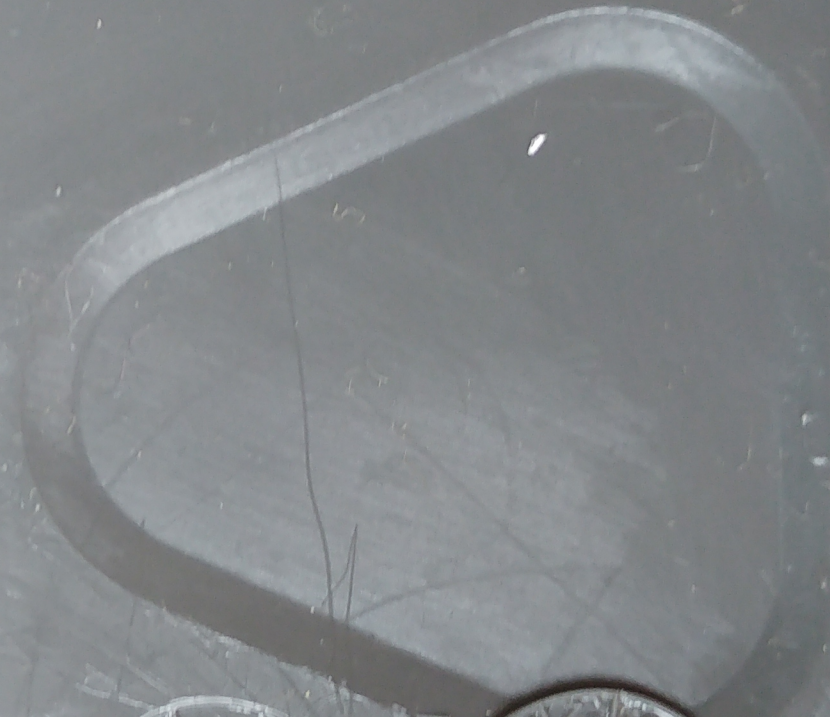
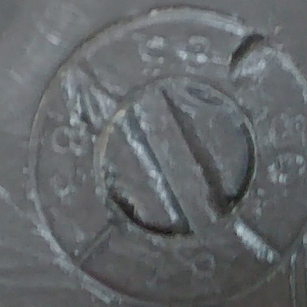
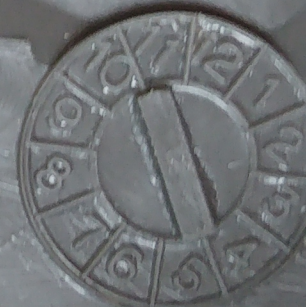
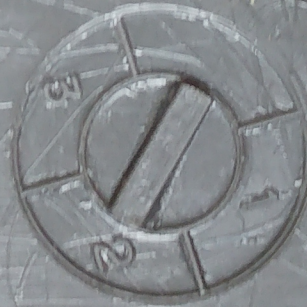
SERIAL NO. 561-0124542

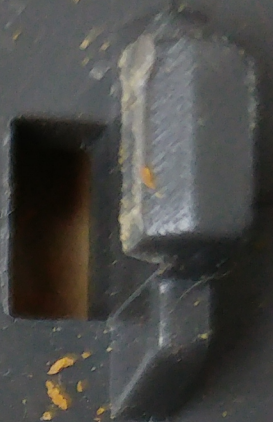
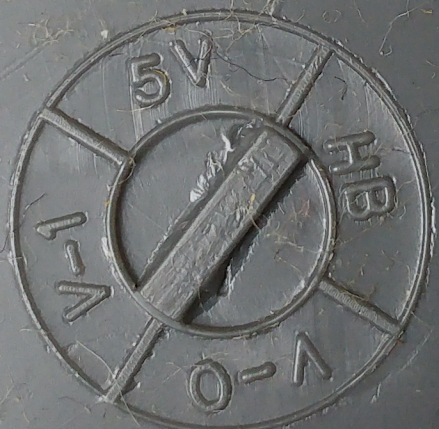


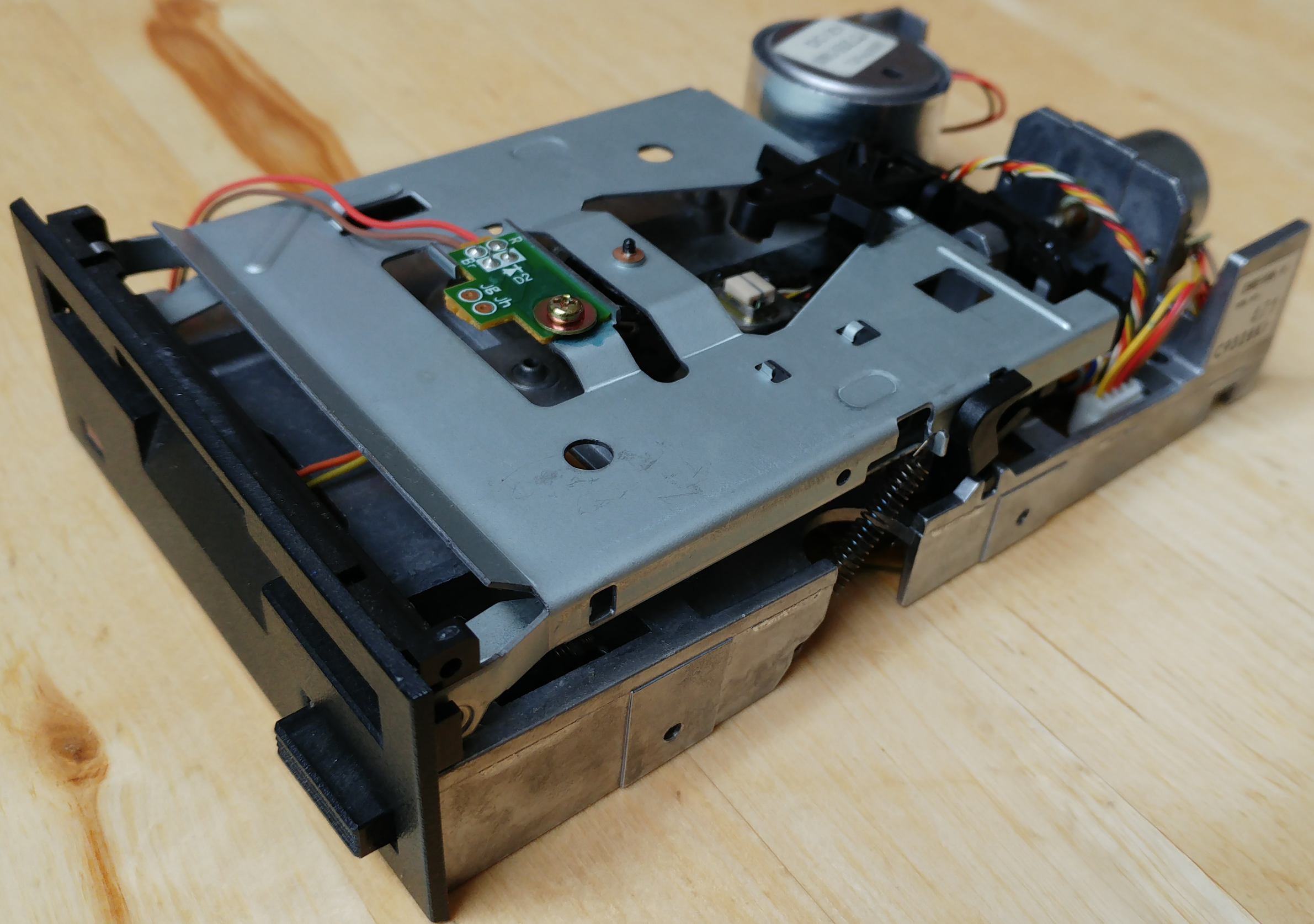
DC12V
MMU-5B2LQJ
15Feb89N2



FA

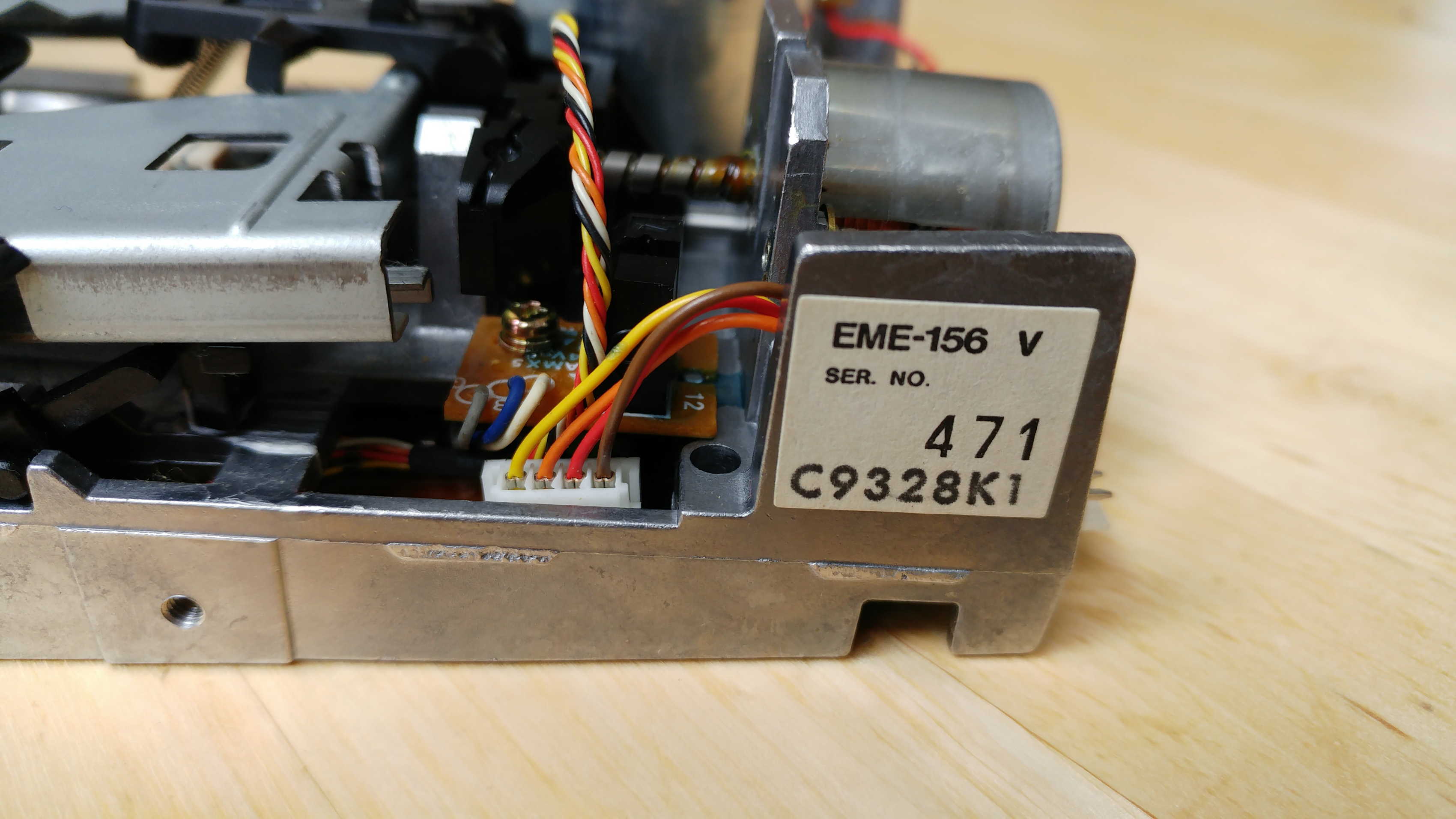
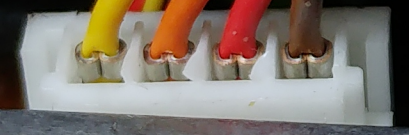






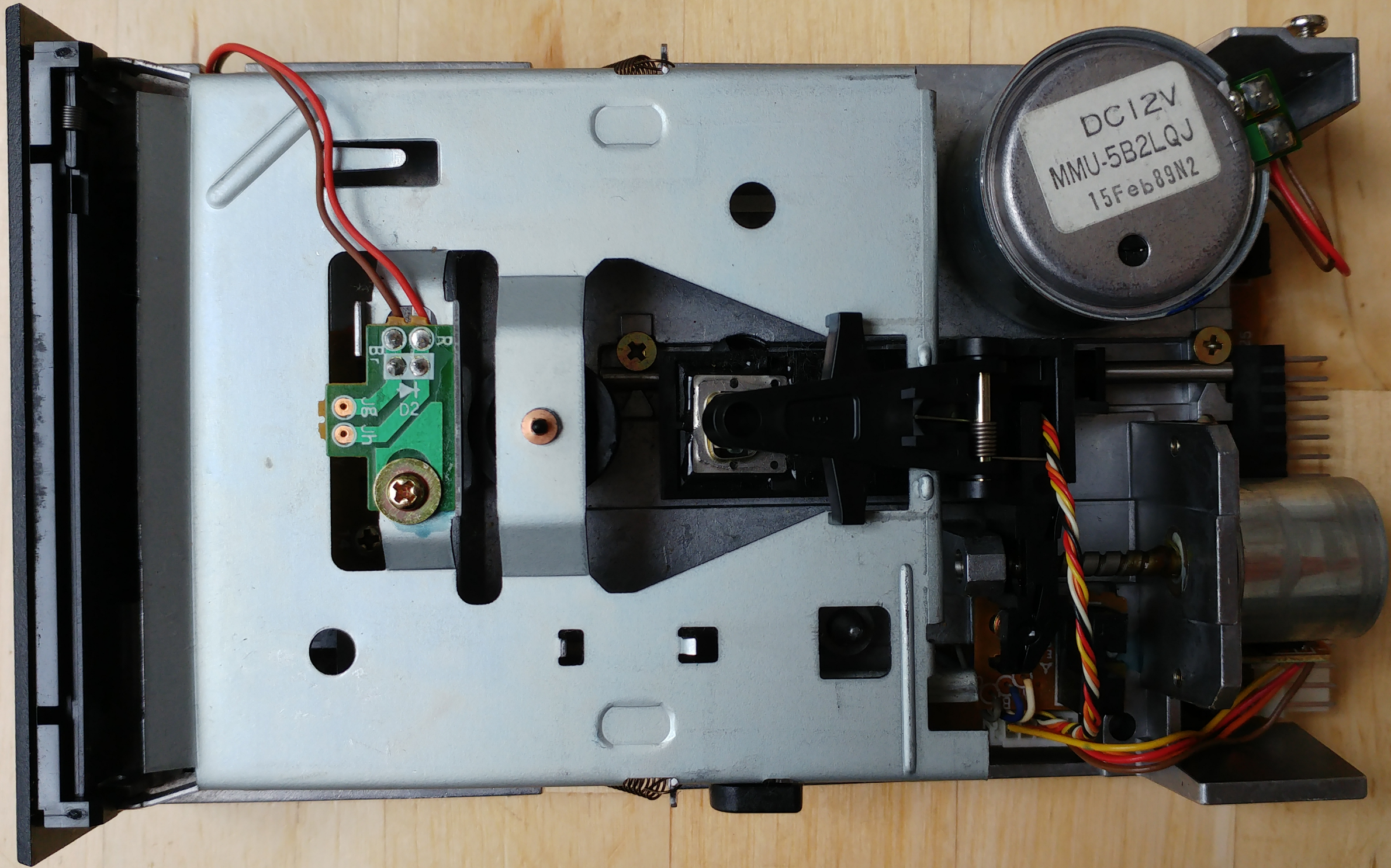
EME-156 V
SER. NO.
471
C9328K1

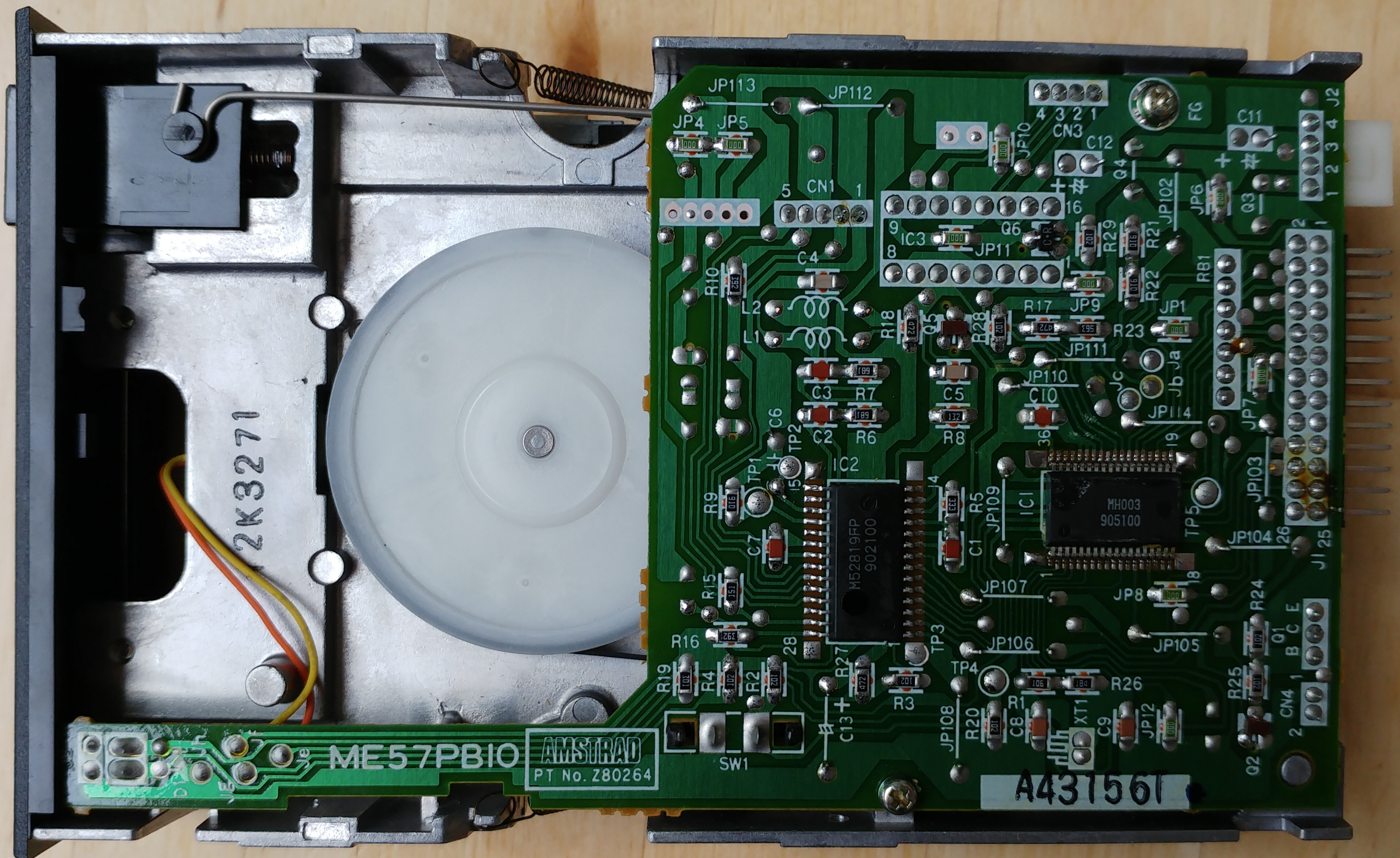
12



DC 12V
MMU-5B2LQJ
15Feb89N2

3





2K3271

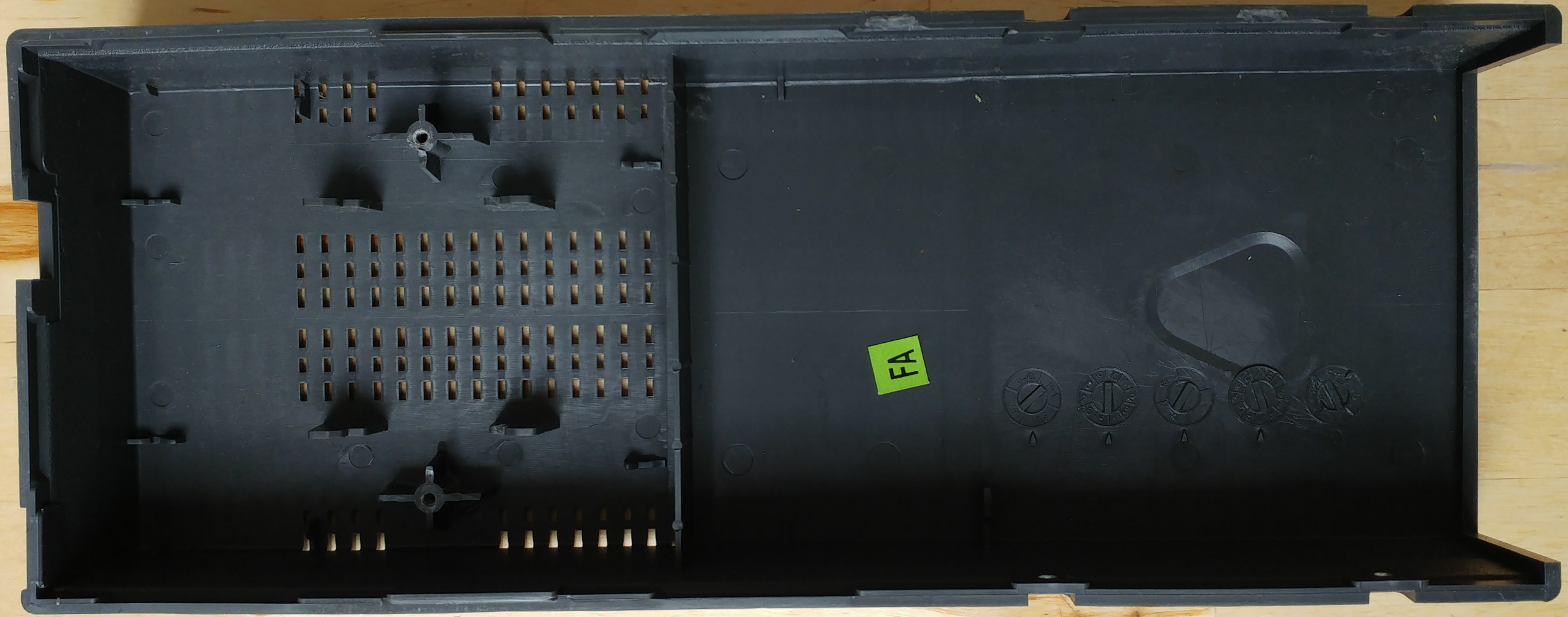
ME57PBIO AMSTRAD PT No. Z80264

A431561

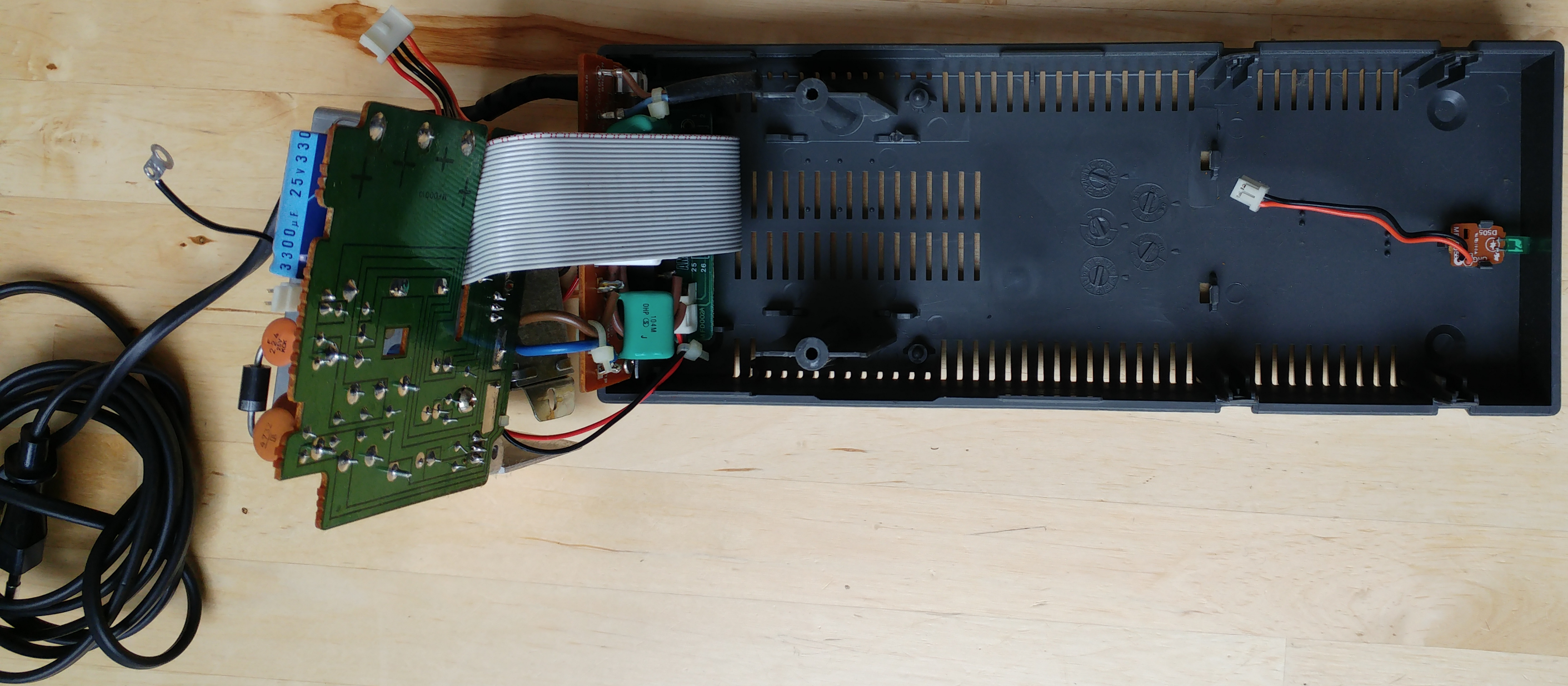
M52819FP 902100

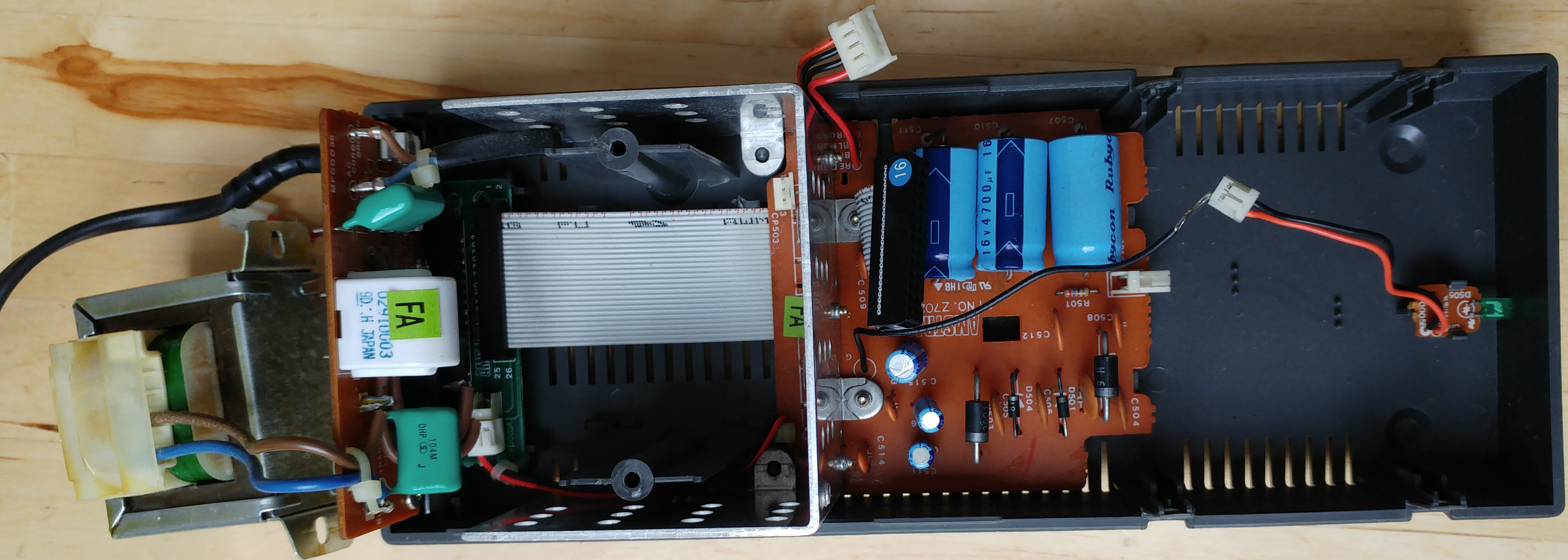
MH003 905100

JP113 JP112 JP4 JP5 CN3 C12 FG C11
5 CN1 1 4 3 2 1
9 8 IC3 G6 JP11 Q4 JP102 JP6 Q3
R10 L2 C4 R18 R17 JP9 R23 JP1 R81
L1 L2 C3 R7 C5 R8 JP110 C10 JP114
R9 TP1 C6 TP2 IC2 C1 R5 JP109 ICI TP5
R15 R16 R4 R2 R3 TP3 JP107 JP8
R19 R1 R20 C8 R1 XT1 C9 JP12 R25
C13 R27 TP4 JP108 R26 R24
SW1 C13+ R27 TP4 JP108 R26 R24
Q2 CN4 1 B C E 01
2 CN4 1 B C E 01
JI 25 JI 26 JP104 26
JP103 JP7
JP102 JP6
JP101 JP1
JP111 JP11
JP110 JP9
JP10 JP10
JP102 JP6
JP103 JP7
JP104 26
JI 25 JI 26
JP102 JP6
JP101 JP1
JP111 JP11
JP110 JP9
JP10 JP10
JP102 JP6
JP103 JP7
JP104 26
JI 25 JI 26



FA





AMSTRAD

PT NO. Z70201

PA @ 1HB

C512

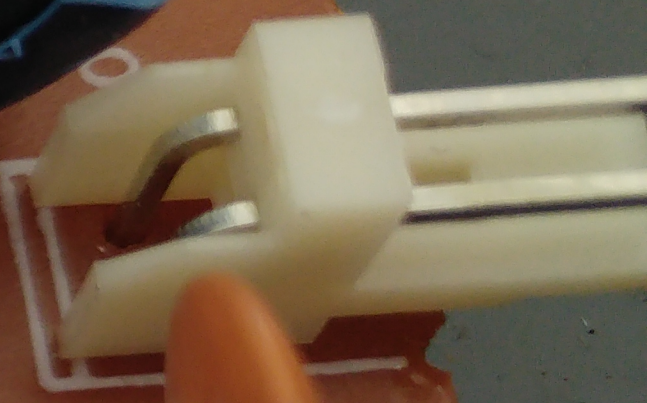
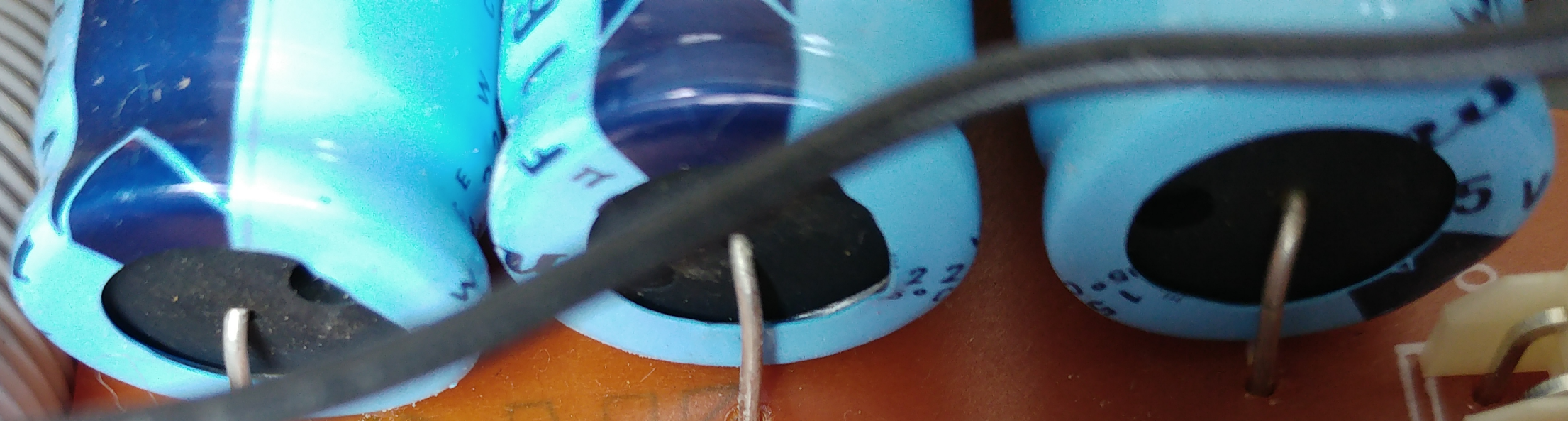
R501

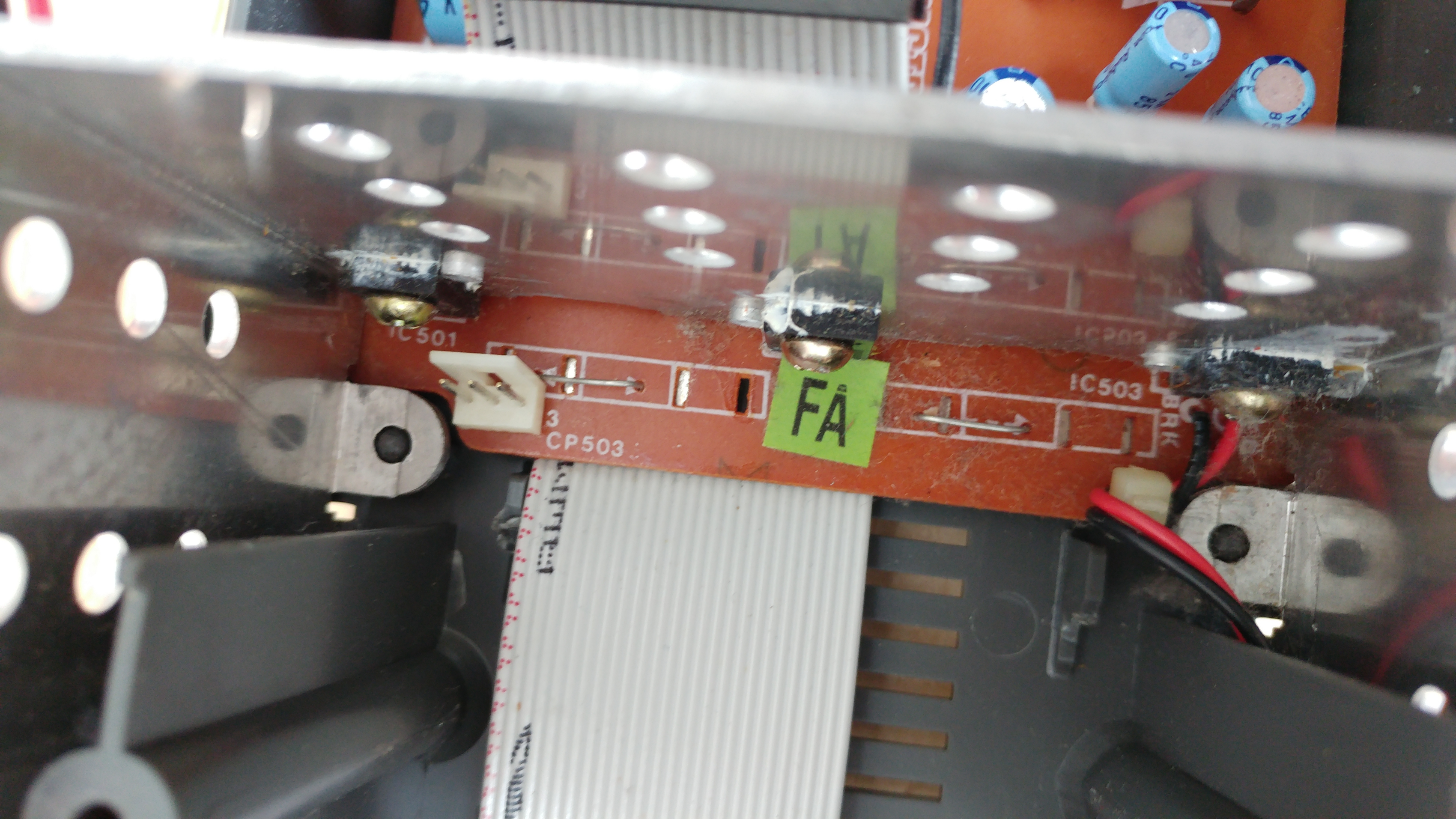
508

D504

C515

FILT
DEC
CENT





FA

IC501

3
CP503

IC503

BRK

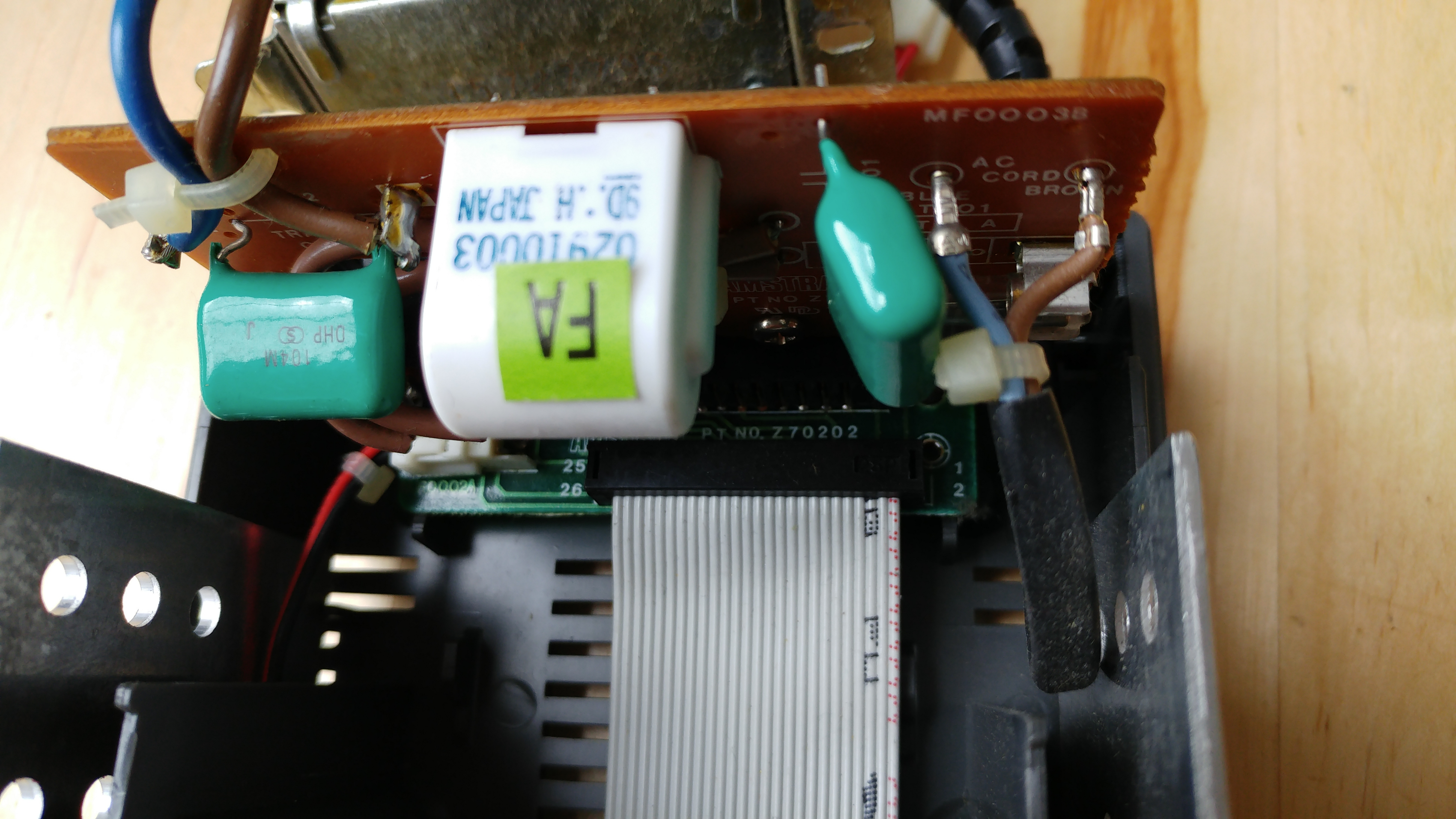
1511151

152200000

4700µF
25V

4700µF
25V

4700µF
25V



MFO003B

AC CORD
BLUE BROWN

02910003
9D. H JAPAN

FA

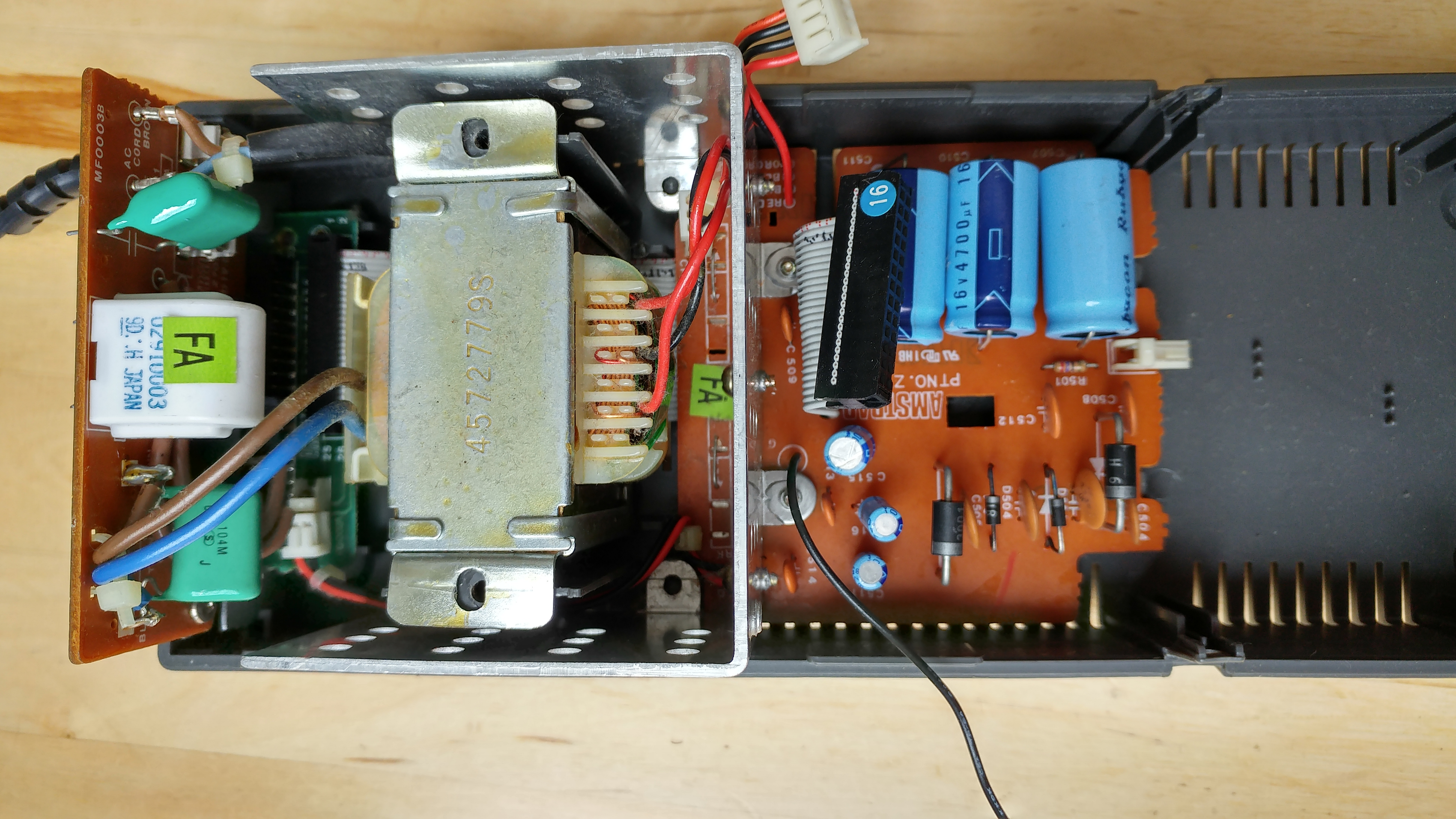
DHP J
104M

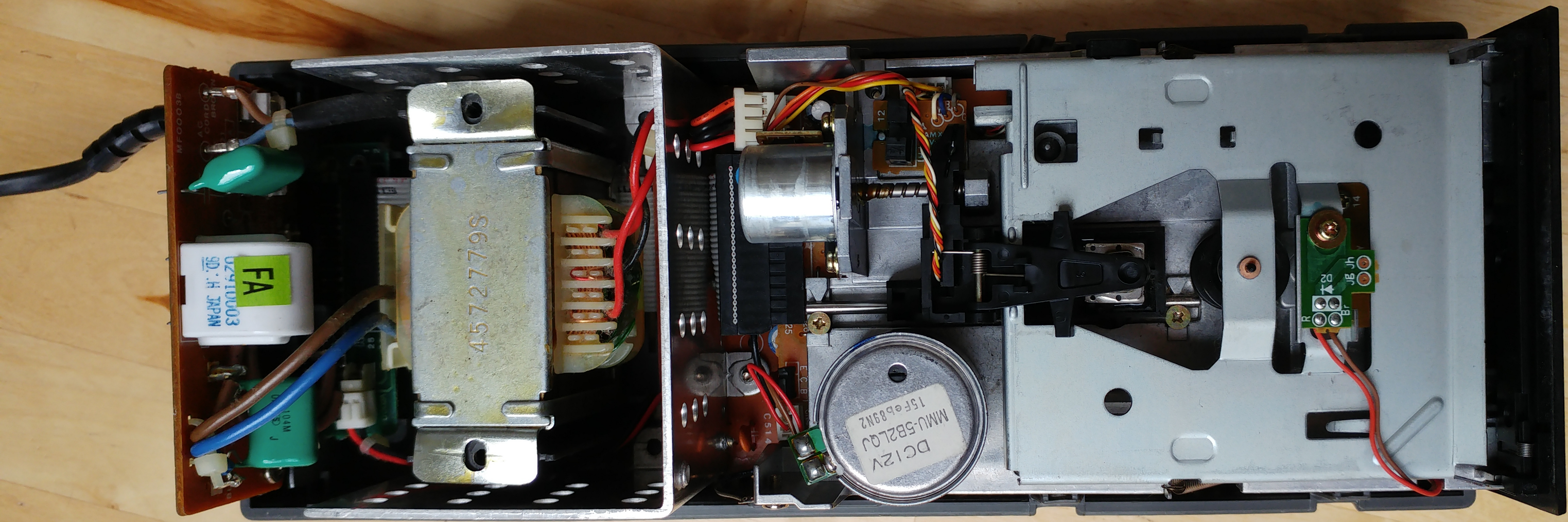
PT NO. Z70202

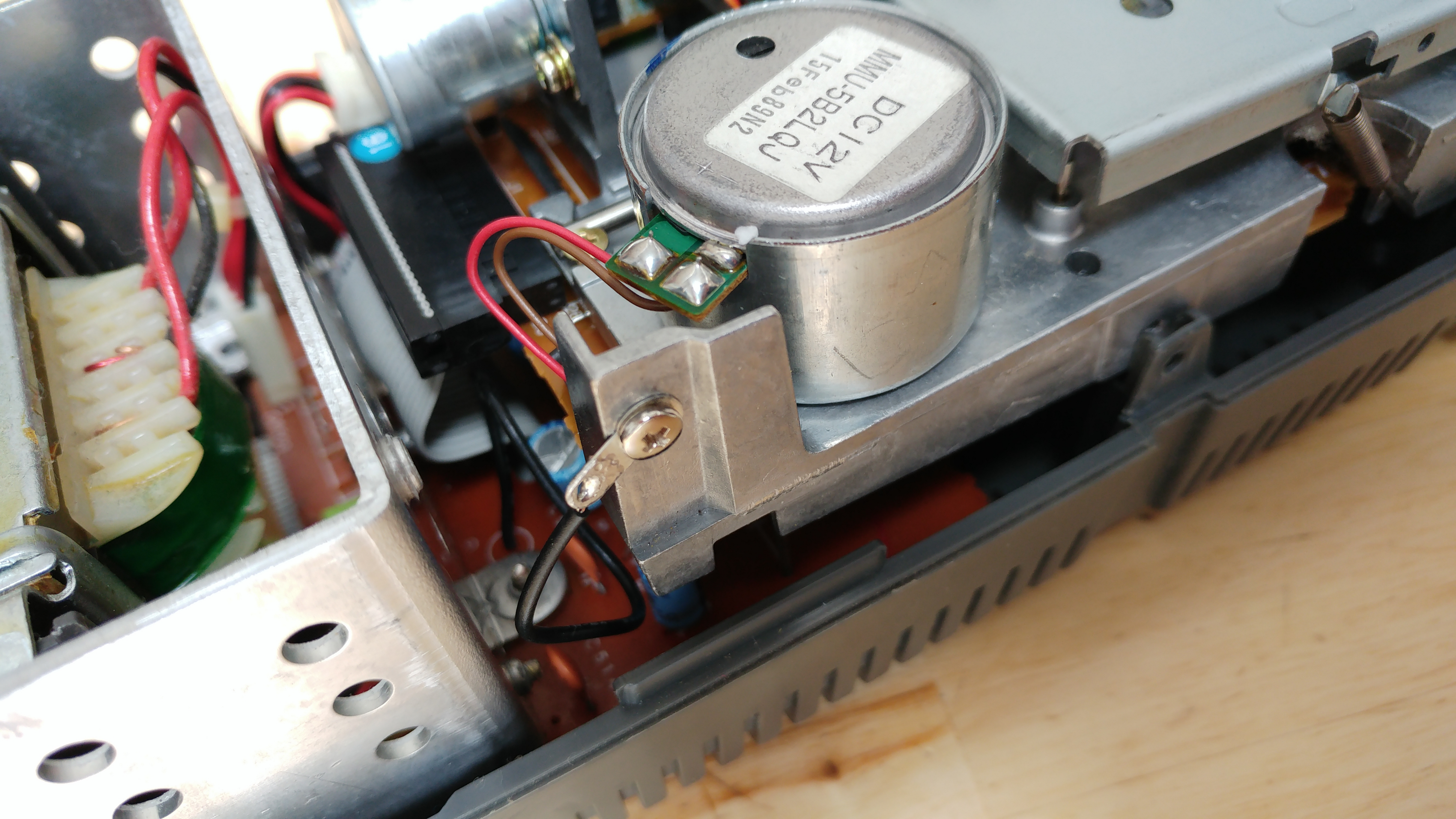
25
26

1
2

1-1-1
1-1-1







DC 12V
MMU-5B2LQJ
15Feb89M2