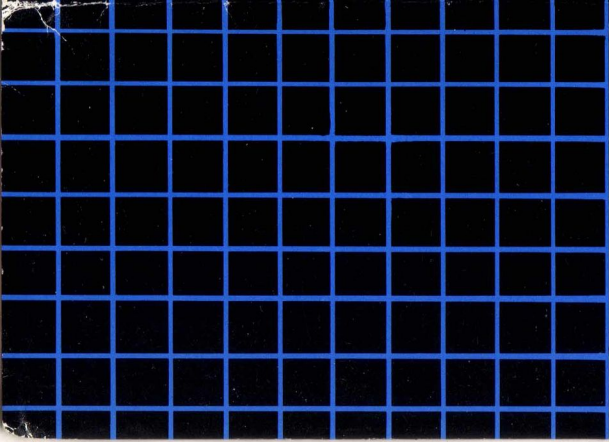


dktronics®

**256K
MEMORY EXPANSION**

**for the AMSTRAD
6128 COMPUTER**

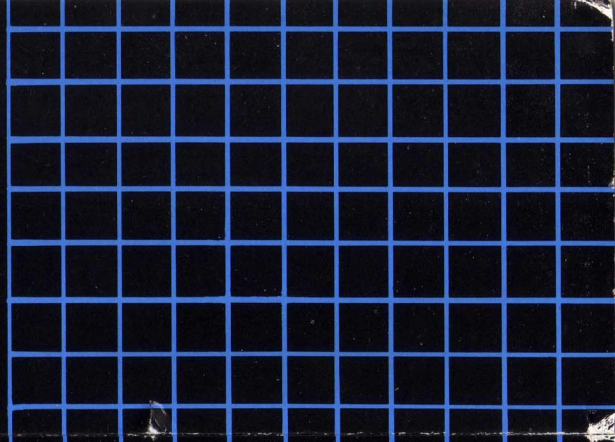
THE POWER BEHIND YOUR AMSTRAD

- 
- **Expands the 6128 memory to 320K.**
 - **Supplied with Bank Switching RSX Software.**
 - **Compatible with d'tronic 256K Silicon Disc.**
 - **Requires No Extra Power Supply.**

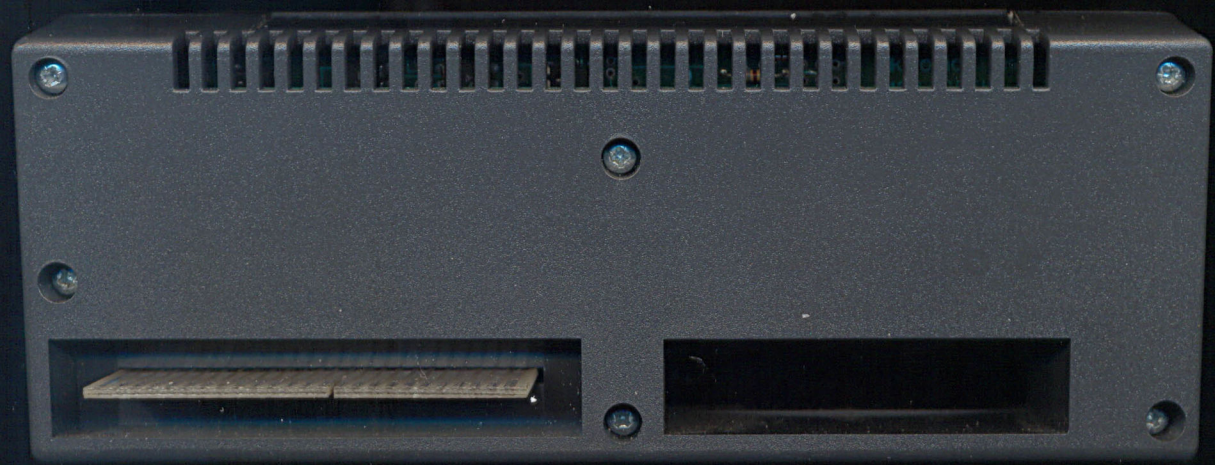
d'ronics Limited,
Longs Industrial Estate, Englands Lane, Gorleston, Great Yarmouth,
Norfolk NR31 6BE, England. Telephone: (0493) 602926 (5 Lines).

- **Expands the 6128 memory to 320K.**
- **Supplied with Bank Switching RSX Software.**
- **Compatible with d'tronic 256K Silicon Disc.**
- **Requires No Extra Power Supply.**

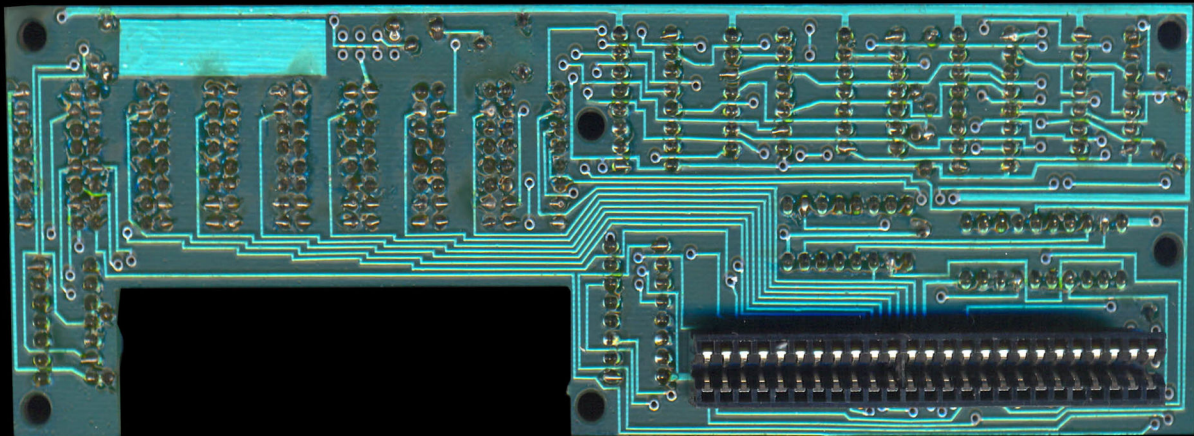
d'tronic Limited,
Longs Industrial Estate, Englands Lane, Gorleston, Great Yarmouth,
Norfolk NR31 6BE, England. Telephone: (0493) 602926 (5 Lines).







dk'tronics 256K MEMORY



dktronics 1986
6128 - 256K. ver 2

GS 1T5W KOREA
GM71256 - 15

GS 1T5W KOREA
GM71256 - 15

GS 1T5W KOREA
GM71256 - 15

GS 1T5W KOREA
GM71256 - 15

GS 1T5W KOREA
GM71256 - 15

GS 1T5W KOREA
GM71256 - 15

GS 1T5W KOREA
GM71256 - 15

GS 1T5W KOREA
GM71256 - 15

KY T74LS2701
9902A

SN74LS2701
XXACB902

SN74LS2701
XXACB902

KY T74LS2701
9902A

KY T74LS1181
99019

SN74LS179N
KXSJ9015

SN74LS153N
FFYU9028

GS 954
GD7ALS74A

DATTEL









dk'tronics 1986
6128 - 256K ver 2

SILICON DISC
© dk'tronics Ltd. 1985

NEC 8516LR213
DATA
041256C -15

NEC 8516LR213
DATA
041256C -15

NEC 8525LR719
DATA
041256C -15

NEC 8525LR719
DATA
041256C -15

NEC 0525LR724
DATA
041256C -15

7ALS27N
SW8009 JP

7ALS27N
SW8009 JP

7ALS27N
SW8009 JP

7ALS27N
SW8009 JP

7ALS74AN A
SW8009 JP

SP8548
DM74LS174N

ADPALL16LRPC
85356MM



Software can be loaded between
32768 and 40527
(ENTER locates as high as possible)

Load address ?

DKtronics. Banks 1 to 16 = 256K.

Ready



LUXOR

Software can be loaded between
32768 and 38306
(ENTER locates as high as possible)

Load address ?

DKtronics. Banks 1 to 4 = 64K.

Ready



LUXOR